

# MALDIVES LAND AND SURVEY AUTHORITY

MINISTRY OF HOUSING AND INFRASTRUCTURE

Office (PABX): +(960) 3004300, Fax: +(960) 3004254

Ameenee Magu, Maafannu, Male', 20392, Maldives.

Email: survey@housing.gov.mv

Web: www.surveyofmaldives.gov.mv



<b>CONTROL POINT DETAILS</b>	<b>Station Number</b> PSM0452
<b>Coordinate Information</b>	
<b>Geodetic</b>	<b>Grid</b>
<b>WGS 84</b>	<b>UTM Zone 43</b>
Lat:	E: 306753.751m
Long:	N: 681877.600m
Ellp Height:	Orth Height: 1.502m
<b>Island Name:</b> Sh. Lhaimagu (LD0978)	<b>Date:</b> 2021-07-18

**Monument description & method of survey:**

Concrete casted in situ a diameter 0.3m pvc pipe, 1m in length, 1.5m s/s rod driven to ground as the centre with center mark punched .

Monument labelled with s/s plate stating the point ID.

- Monument type A.
- Below ground level ( 150mm).
- Static Survey 3D control by GNSS post processing.
- Vertical datum MSL, corrected to predicted tide table using static survey's water level from point 102.
- PSM0452 is visible to PSM0453,

**General site condition & access:**

- Near Island council on Ameenee Magu beach side.
- Easily accessible.

**Owner:** Sh. Lhaimagu Council



DOWN TOWARD PSM



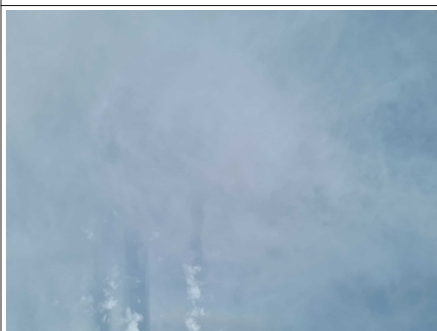
NORTH VIEW

Height 1.2m  
Distance 3m



EAST VIEW

Height 1.2m  
Distance 3m



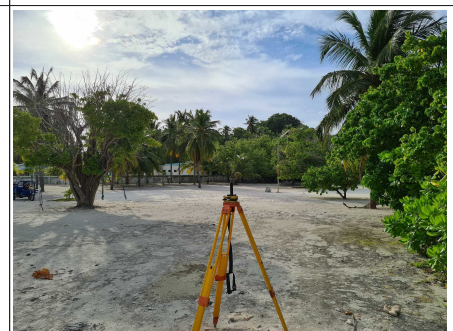
FROM PSM UPTOWARD SKY

Height 1.5m



SOUTH VIEW

Height 1.2m  
Distance 3m



WEST VIEW

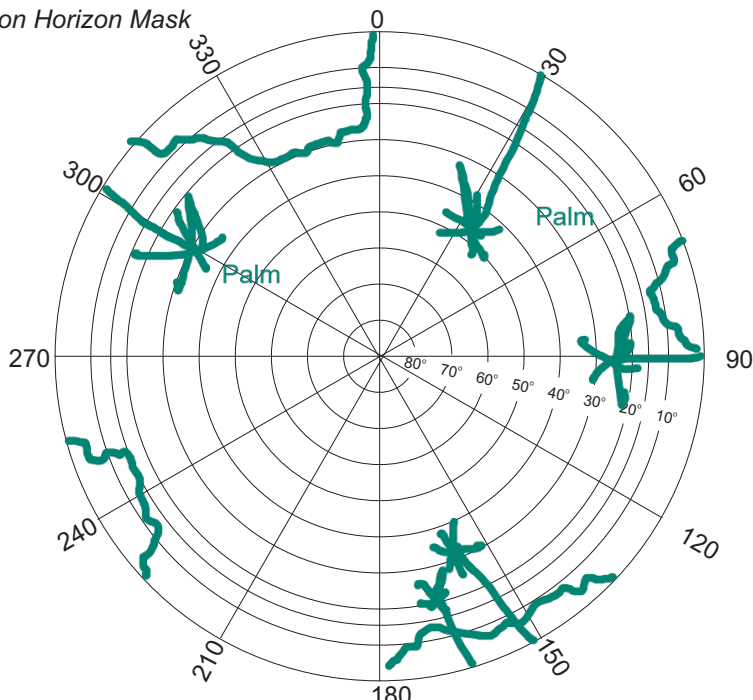
Height 1.2m  
Distance 3m

**SITE INFORMATION**

Station Number

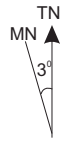
P	S	M	0	4	5	2
---	---	---	---	---	---	---

Station Horizon Mask



Height above Marker that horizon was mapped from 1.5 m

Magnetic Declination \_\_\_\_\_  
 Declination applied to this figure?  
 Yes  No



Locality

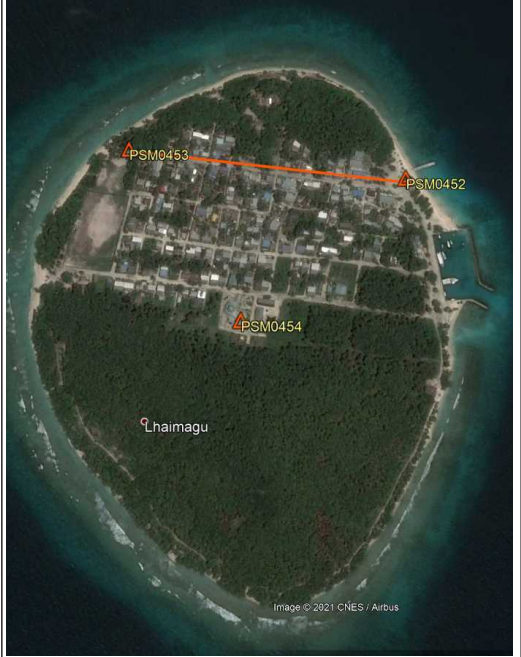
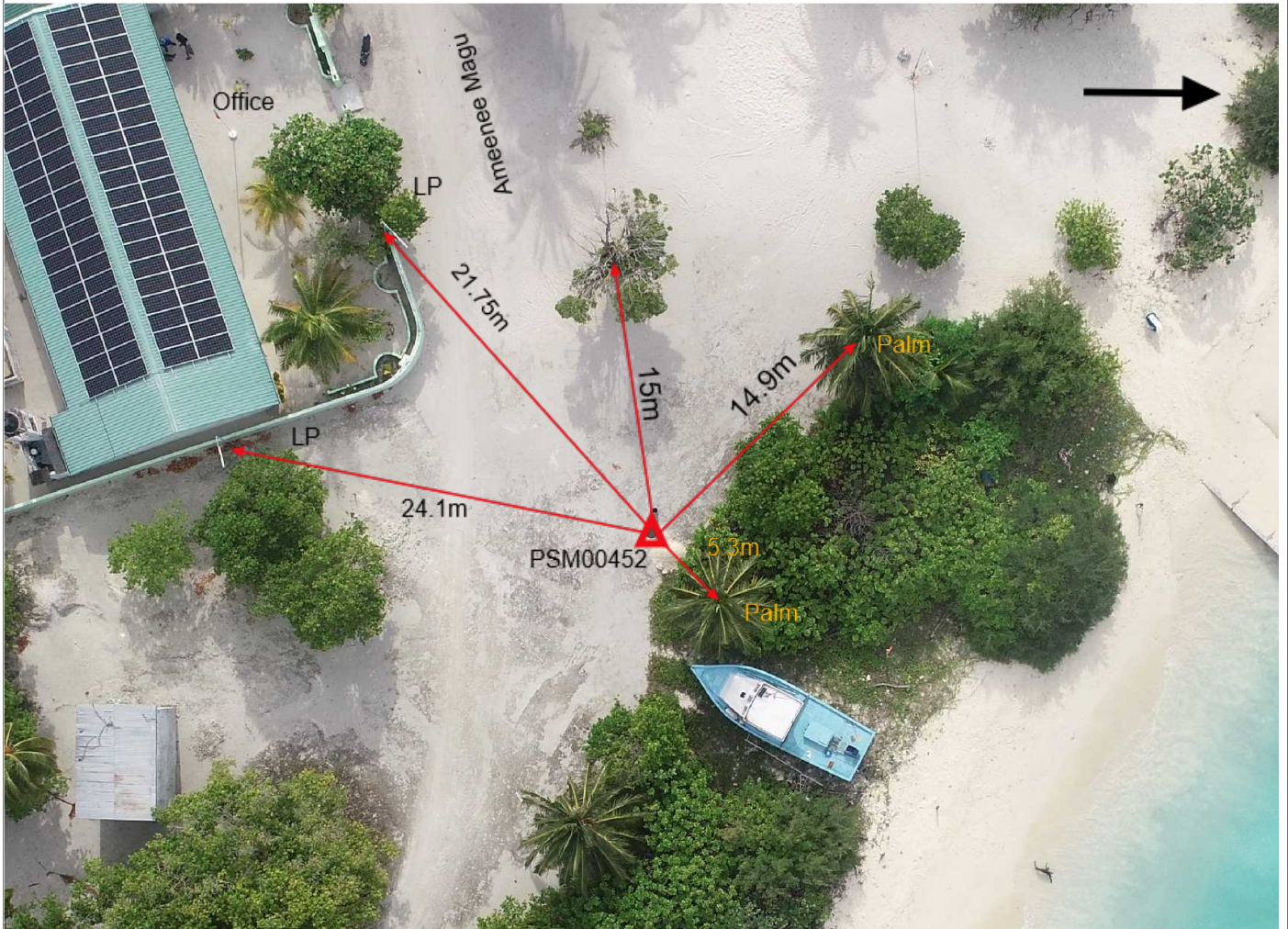


Image © 2021 CNES / Airbus



Sketched by: **Hussein**

Scale: Not to scale

Date: **2021-07-16**

# MALDIVES LAND AND SURVEY AUTHORITY

MINISTRY OF HOUSING AND INFRASTRUCTURE

Office (PABX): +(960) 3004300, Fax: +(960) 3004254

Ameenee Magu, Maafannu, Male', 20392, Maldives.

Email: survey@housing.gov.mv

Web: www. surveyofmaldives.gov.mv



<b>CONTROL POINT DETAILS</b>	<b>Station Number</b> PSM0453
<b>Coordinate Information</b>	
<b>Geodetic</b>	<b>Grid</b>
<b>WGS 84</b>	<b>UTM Zone 43</b>
Lat:	E: 306294.835m
Long:	N: 681919.650m
Ellp Height:	Orth Height: 1.263m
<b>Island Name:</b> Sh. Lhaimagu (LD0978)	<b>Date:</b> 2021-07-18

### Monument description & method of survey:

Concrete casted in situ a diameter 0.3m pvc pipe, 1m in length, 1.5m s/s rod driven to ground as the centre with center mark punched .

Monument labelled with s/s plate stating the point ID.

- Monument type A.

- Below ground level ( 150mm).

- Static Survey 3D control by GNSS post processing.

- Vertical datum MSL, corrected to predicted tide table using static survey's water level from point 102.

-PSM0453 is visible to PSM0452,

### General site condition & access:

-Western side end of Ameenee Magu

- Easily accessible.

Owner: Sh. Lhaimagu Council

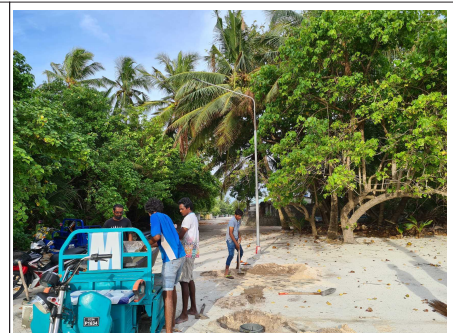


DOWN TOWARD PSM



Height 1.2m  
Distance 5m

NORTH VIEW



Height 1.2m  
Distance 5m

EAST VIEW



Height 1.5m

FROM PSM UPTOWARD SKY



Height 1.2m  
Distance 5m

SOUTH VIEW



Height 1.2m  
Distance 5m

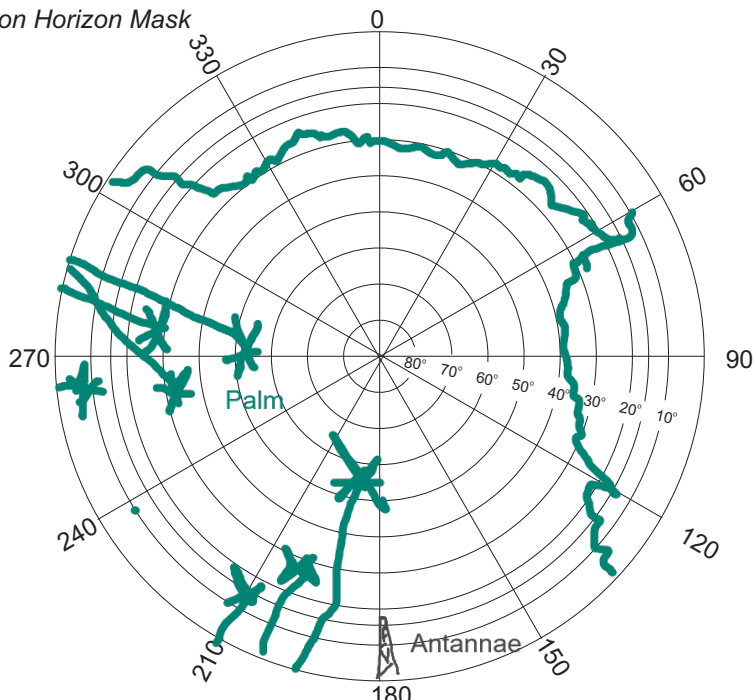
WEST VIEW

**SITE INFORMATION**

Station Number

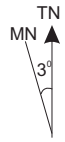
P	S	M	0	4	5	3
---	---	---	---	---	---	---

Station Horizon Mask

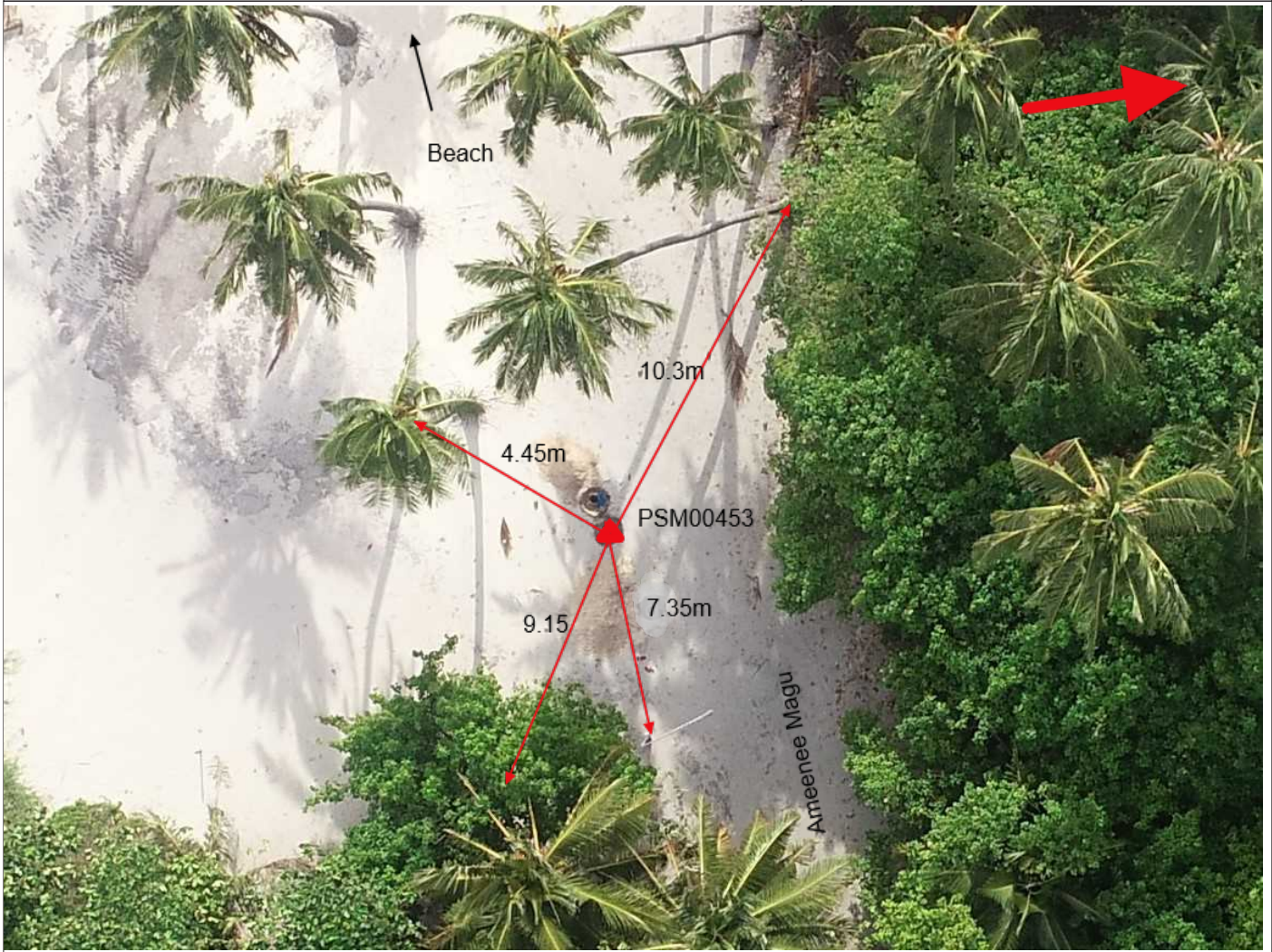
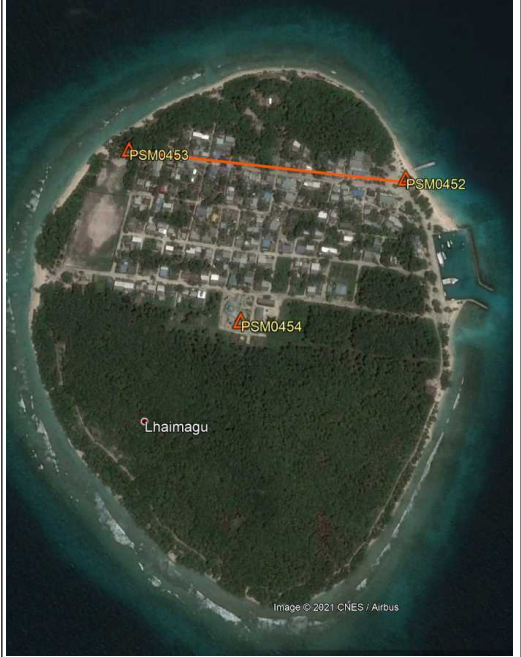


Height above Marker that horizon was mapped from 1.5 m

Magnetic Declination \_\_\_\_\_  
 Declination applied to this figure?  
 Yes  No



Locality



Sketched by: **Hussein**

Scale: Not to scale

Date: **2021-07-16**

# MALDIVES LAND AND SURVEY AUTHORITY

MINISTRY OF HOUSING AND INFRASTRUCTURE

Office (PABX): +(960) 3004300, Fax: +(960) 3004254

Ameenee Magu, Maafannu, Male', 20392, Maldives.

Email: survey@housing.gov.mv

Web: www. surveyofmaldives.gov.mv



<b>CONTROL POINT DETAILS</b>		<b>Station Number</b> PSM0454	
<b>Coordinate Information</b>			
<b>Geodetic</b>		<b>Grid</b>	
<b>WGS 84</b>		<b>UTM Zone 43</b>	
Lat:	E:	306497.732m	
Long:	N:	681647.925m	
Ellp Height:	Orth Height:	1.082m	
<b>Island Name:</b> Sh. Lhaimagu (LD0978)		<b>Date:</b> 2021-07-18	

**Monument description & method of survey:**

- Concrete casted in situ a diameter 0.3m pvc pipe, 1m in length, 1.5m s/s rod driven to ground as the centre with center mark punched .
- Monument labelled with s/s plate stating the point ID.
- Monument type A.
- Above ground level ( 50mm).
- Static Survey 3D control by GNSS post processing.
- Vertical datum MSL, corrected to predicted tide table using static survey's water level from point 102.

**General site condition & access:**

- Located inside Rajau Mosque, Near Well.
- Easily accessible.

**Owner:** Sh. Lhaimagu Council



DOWN TOWARD PSM



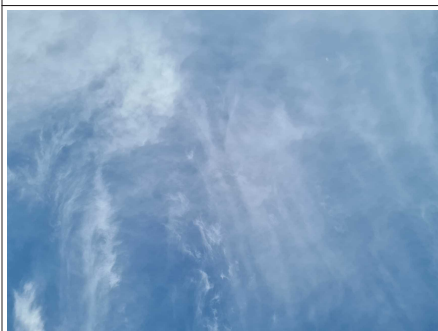
NORTH VIEW

Height 1.2m  
Distance 3m



EAST VIEW

Height 1.2m  
Distance 3m



FROM PSM UPTOWARD SKY

Height 1.5m



SOUTH VIEW

Height 1.2m  
Distance 3m



WEST VIEW

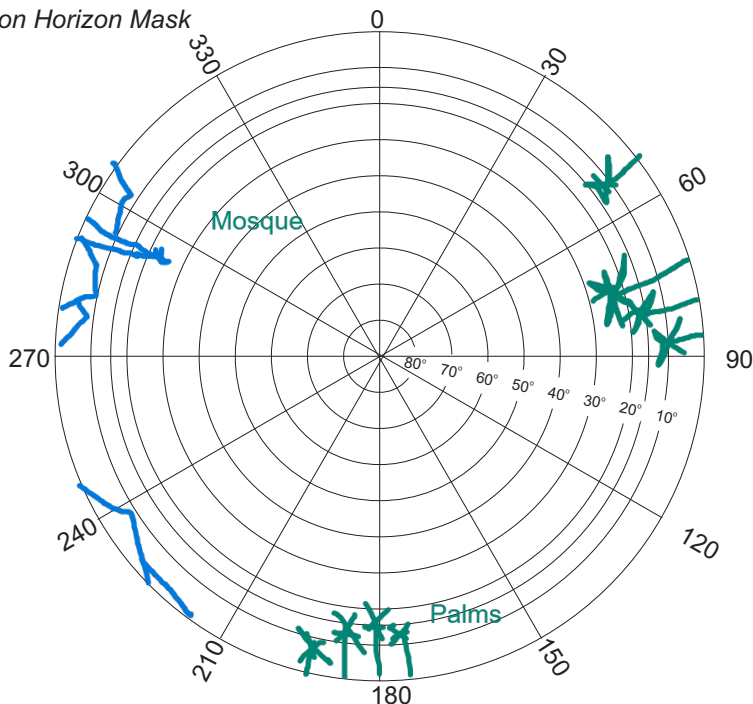
Height 1.2m  
Distance 3m

**SITE INFORMATION**

Station Number

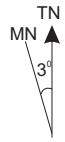
P	S	M	0	4	5	4
---	---	---	---	---	---	---

Station Horizon Mask

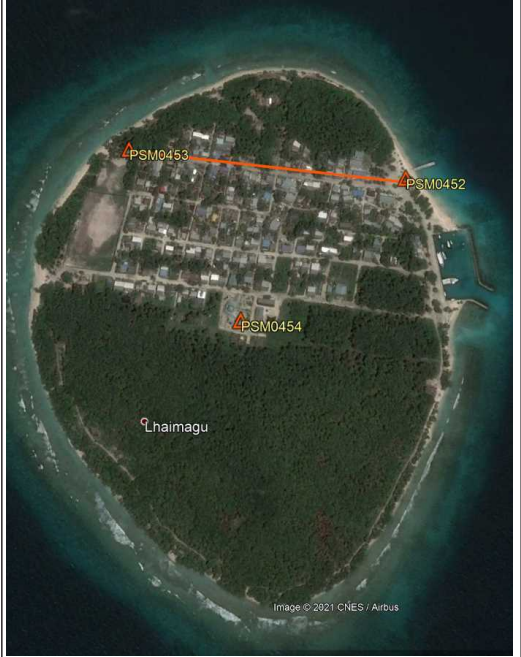


Height above Marker that horizon was mapped from 1.5 m

Magnetic Declination \_\_\_\_\_  
 Declination applied to this figure?  
 Yes  No



Locality



Sketched by: **Hussein**

Scale: Not to scale

Date: **2021-07-16**