

MALDIVES LAND AND SURVEY AUTHORITY

MINISTRY OF HOUSING AND INFRASTRUCTURE

Office (PABX): +(960) 3004300, Fax: +(960) 3004254

Ameenee Magu, Maafannu, Male', 20392, Maldives.

Email: survey@housing.gov.mv

Web: www. surveyofmaldives.gov.mv



CONTROL POINT DETAILS	Station Number PSM0662
Coordinate Information	
Geodetic	Grid
WGS 84	UTM Zone 43
Lat: 6°03'11.02068"N	E: 284410.410
Long: 73°03'07.66894"E	N: 669456.635
Ellp Height: -95.096	Orth Height: 1.312
Island Name: Sh.Komandoo (LD1058)	Date: 14-May-24

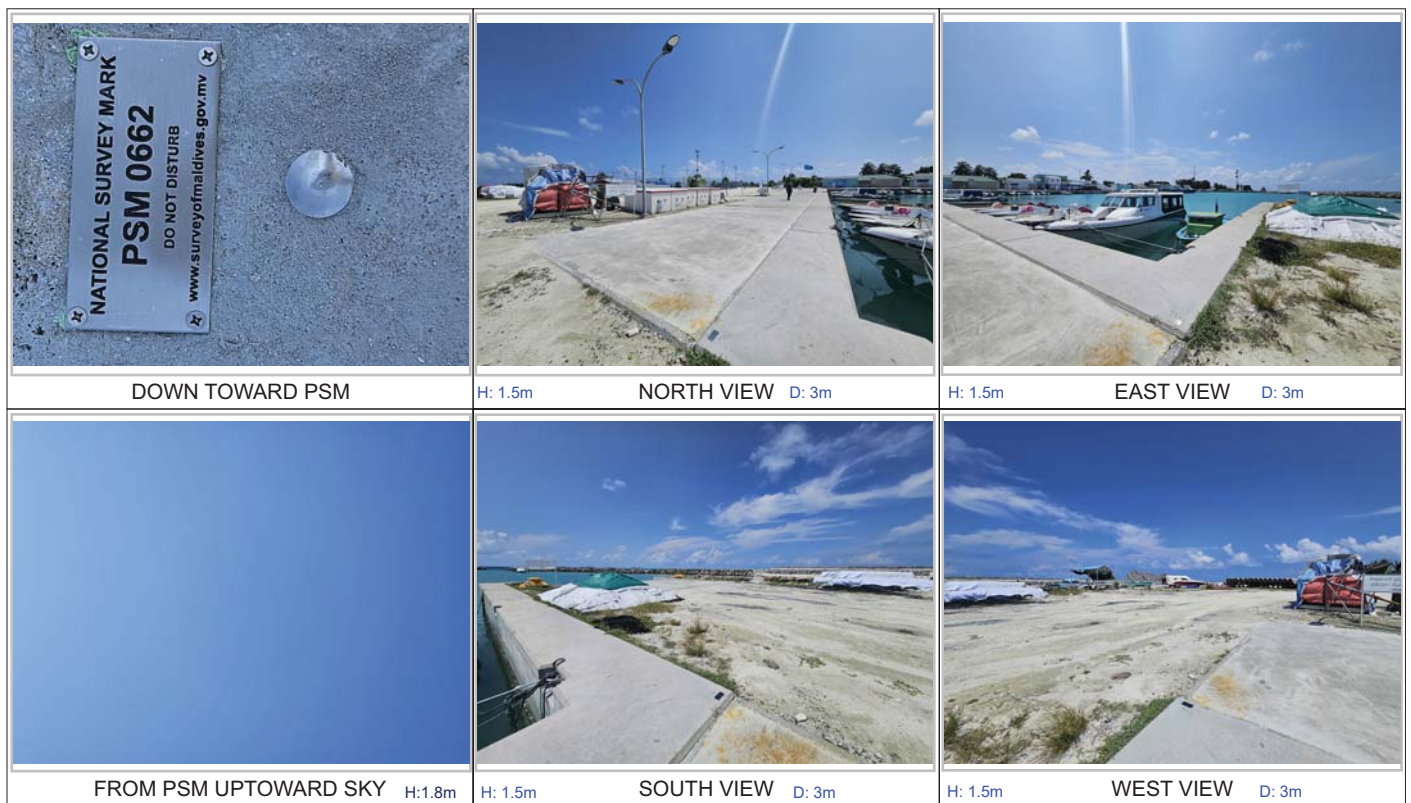
Monument description & method of survey:

- SS mushroom bolt driven to the Quay wall corner , center mark punched.
- PSM plate label attached with screws to the quay wall showing PSM number
- finished to quay wall level .
- Static Survey 3D control by GNSS static post processing.
- Vertical elevation related MSL was transferred from PSM0664 by GNSS static post processing.
- PSM0662 is inter-visible to PSM0663

General site condition & access:

- located at west corner of the harbour, near ramp.
- easily accessible.

Owner: Sh.Komandoo council

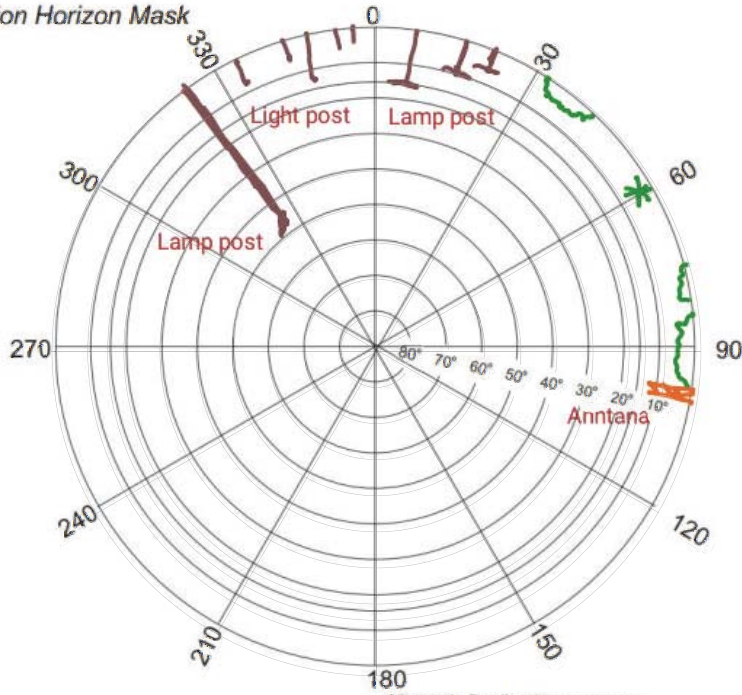


SITE INFORMATION

Station Number

P	S	M	0	6	6	2
---	---	---	---	---	---	---

Station Horizon Mask



Height above Marker that horizon was mapped from 1.5 m

Magnetic Declination
Declination applied to this figure?
 Yes No

Locality



Sketched by: saeed

Scale: Not to scale

Date: 14-May-24

MALDIVES LAND AND SURVEY AUTHORITY

MINISTRY OF HOUSING AND INFRASTRUCTURE

Office (PABX): +(960) 3004300, Fax: +(960) 3004254

Ameenee Magu, Maafannu, Male', 20392, Maldives.

Email: survey@housing.gov.mv

Web: www.surveyofmaldives.gov.mv



CONTROL POINT DETAILS	Station Number PSM0663
Coordinate Information	
Geodetic	Grid
WGS 84	UTM Zone 43
Lat: 6°03'08.84565"N	E: 284630.02
Long: 73°03'14.81710"E	N: 669389.022
Ellp Height: -95.171	Orth Height: 1.233
Island Name: Sh.Komandoo (LD1058)	Date: 14-May-24

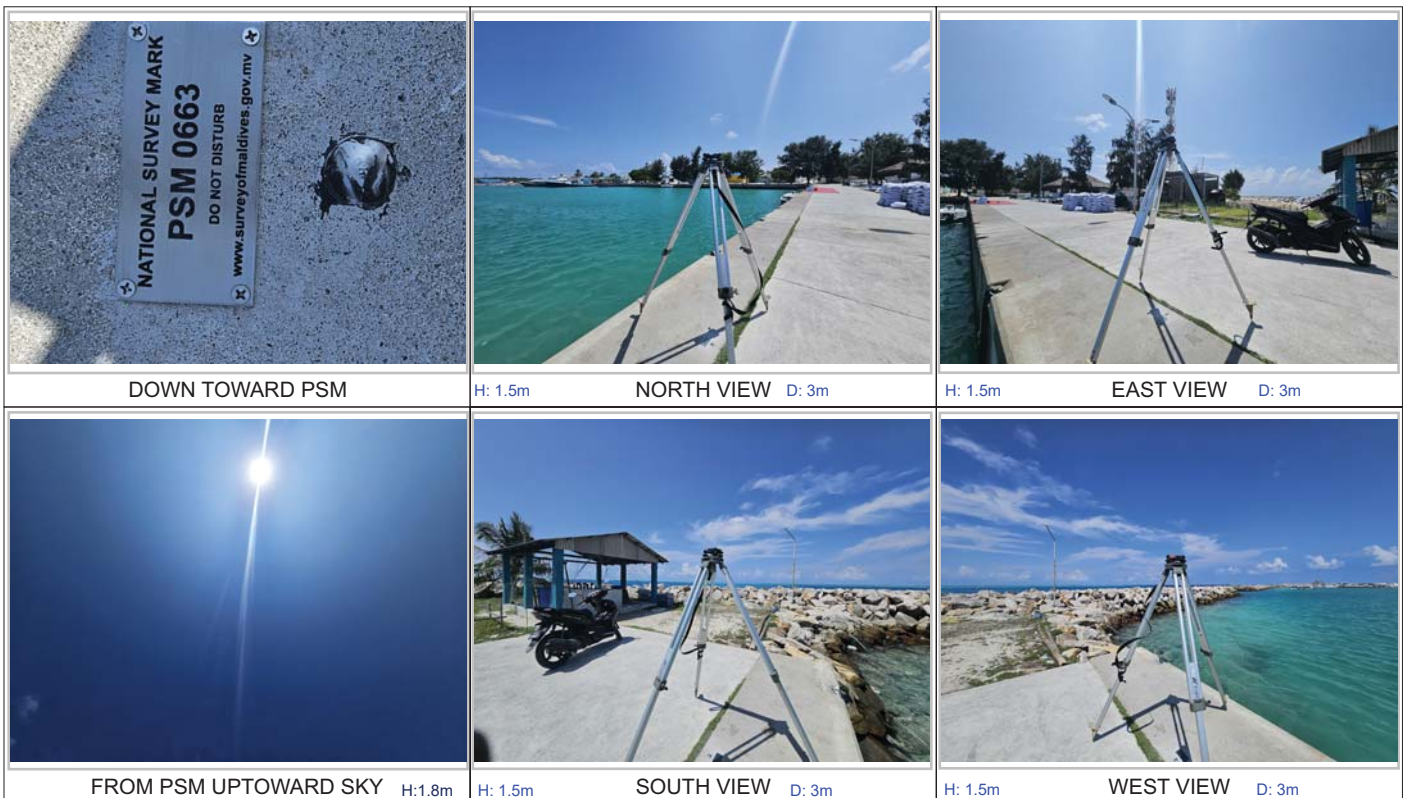
Monument description & method of survey:

- SS mushroom bolt driven to the Quay wall corner , center mark punched.
- PSM plate label attached with screws to the quay wall showing PSM number
- finished to quay wall level .
- Static Survey 3D control by GNSS static post processing.
- Vertical elevation related MSL was transferred from PSM0664 by GNSS static post processing.
- PSM0662 is inter-visible to PSM0663

General site condition & access:

- located at east corner of the harbour, near fish landing hut.
- easily accessible.

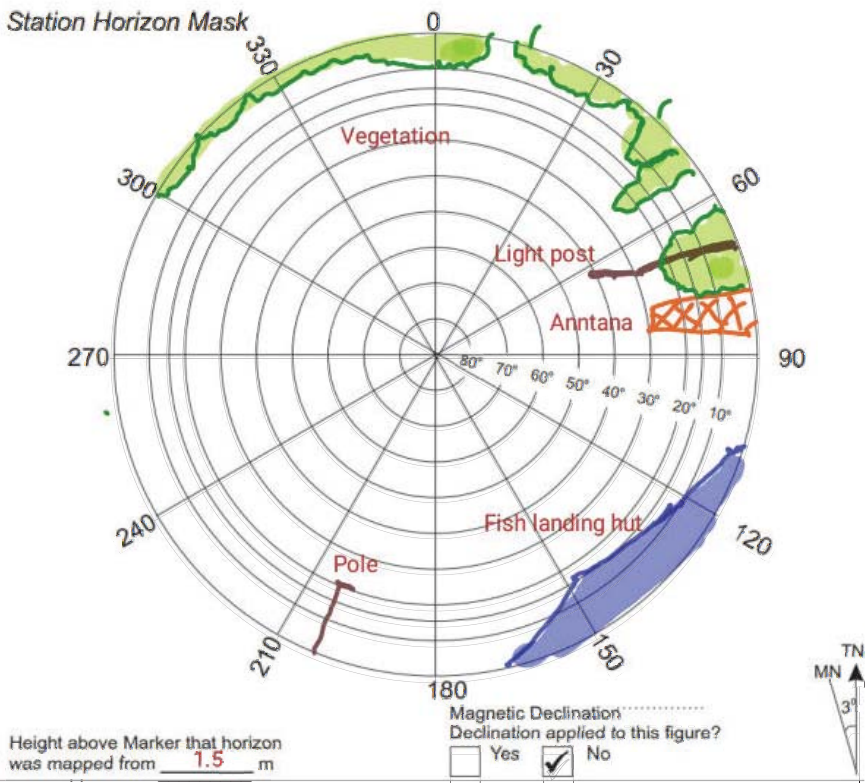
Owner: Sh.Komandoo council



SITE INFORMATION

Station Number

P	S	M	0	6	6	3
---	---	---	---	---	---	---



Locality



Sketched by: saeed

Scale: Not to scale

Date: 14-May-24

MALDIVES LAND AND SURVEY AUTHORITY

MINISTRY OF HOUSING AND INFRASTRUCTURE

Office (PABX): +(960) 3004300, Fax: +(960) 3004254

Ameenee Magu, Maafannu, Male', 20392, Maldives.

Email: survey@housing.gov.mv

Web: www. surveyofmaldives.gov.mv



CONTROL POINT DETAILS	Station Number PSM0664
Coordinate Information	
Geodetic	Grid
WGS 84	UTM Zone 43
Lat: 6°03'13.17045"N	E: 284870.227
Long: 73°03'22.61174"E	N: 669521.037
Ellp Height: -95.251	Orth Height: 1.144
Island Name: Sh.Komandoo (LD1058)	Date: 14-May-24

Monument description & method of survey:

- concrete cast in-situ (cast on-site) with a diameter of 0.3m and 1m in length.
- A 1m long PVC pipe with a diameter of 0.3m was used as a casing for the concrete.
- A 1.5m long stainless steel (s/s) rod was driven to the ground and used to reinforce the monument.
- 0.10m long SS bolt with center punched on top was attached to SS rod with nut.
- The monument was labeled with a stainless steel plate stating the point identification.
- The monument was finished to the ground level.
- Static Survey 3D control by GNSS static post processing.
- Vertical height corrected using tide prediction data.

General site condition & access:

- located inside football ground , near gate
- easily accessible.

Owner: Sh.Komandoo council



DOWN TOWARD PSM



NORTH VIEW D: 3m



EAST VIEW D: 3m



FROM PSM UPTOWARD SKY H:1.8m



SOUTH VIEW D: 3m



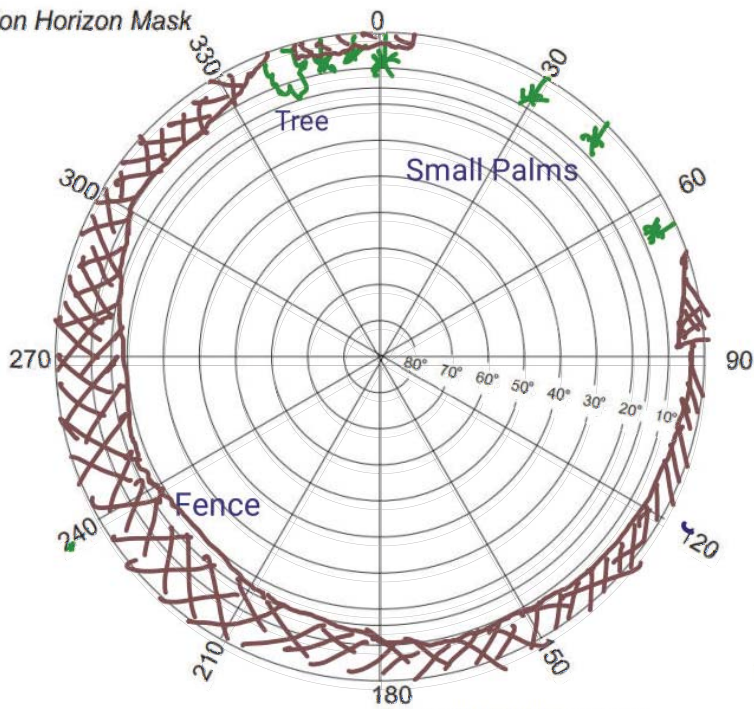
WEST VIEW D: 3m

SITE INFORMATION

Station Number

P S M 0 6 6 4

Station Horizon Mask



Locality



Height above Marker that horizon was mapped from 1.5 m

Magnetic Declination Declination applied to this figure?
 Yes No



Sketched by: saeed

Scale: Not to scale

Date: 14-May-24