

# MALDIVES LAND AND SURVEY AUTHORITY

MINISTRY OF HOUSING AND INFRASTRUCTURE

Office (PABX): +(960) 3004300, Fax: +(960) 3004254

Ameenee Magu, Maafannu, Male', 20392, Maldives.

Email: survey@housing.gov.mv

Web: www. surveyofmaldives.gov.mv



<b>CONTROL POINT DETAILS</b>	<b>Station Number</b> PSM0644
<b>Coordinate Information</b>	
<b>Geodetic</b>	<b>Grid</b>
<b>WGS 84</b>	<b>UTM Zone 43</b>
Lat: 5°37'30.64285"N	E: 282941.037
Long: 5°37'30.64285"N	N: 622135.224
Ellp Height: -95.167	Orth Height: 1.003
<b>Island Name:</b> R.Dhuvaafaru( LD0790 )	<b>Date:</b> 13-Jan-24

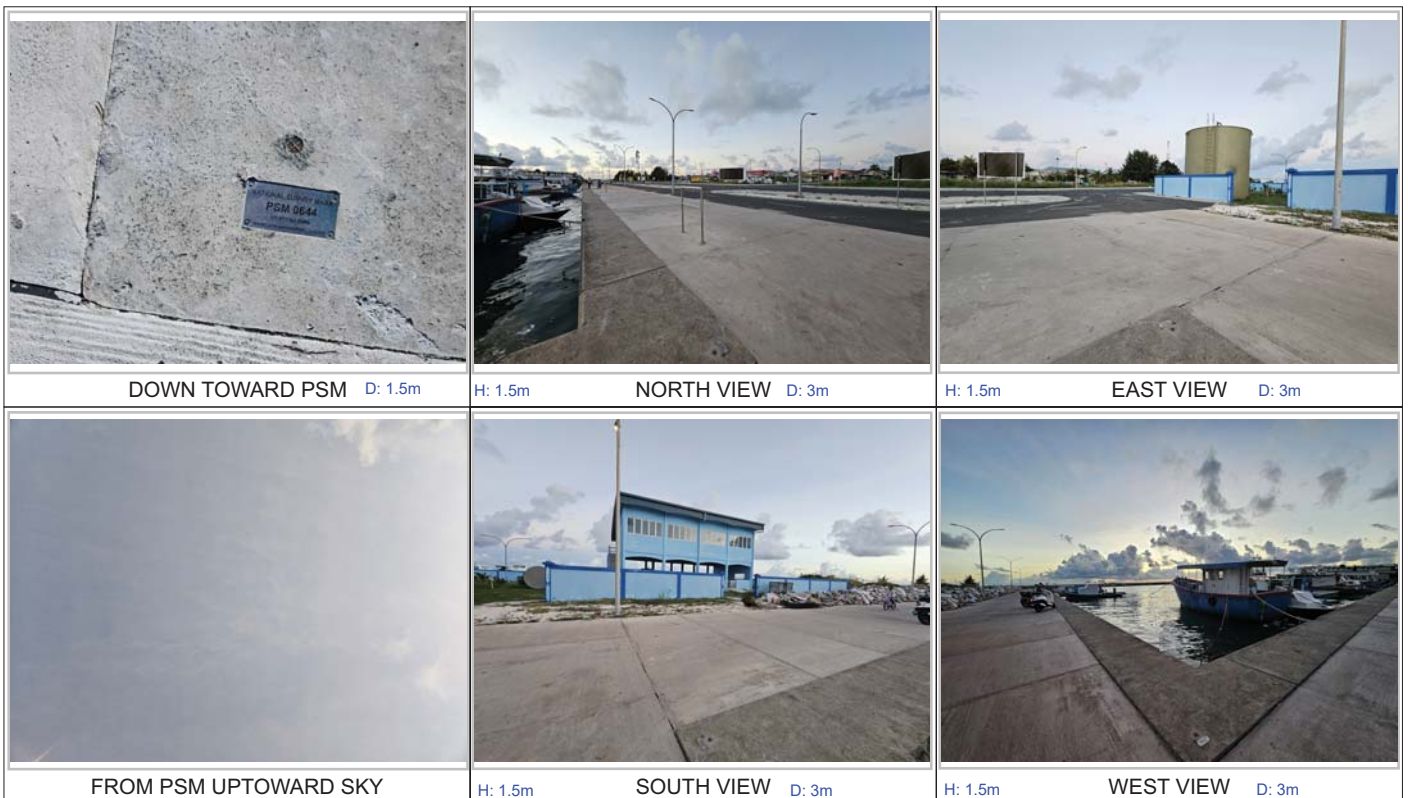
### Monument description & method of survey:

- Hex bolt driven to the Quay wall corner , center marked with cross
- PSM plate label attached with screws to the quay wall showing PSM number
- finished to quay wall level .
- Static Survey 3D control by GNSS post processing.
- Vertical datum MSL,height corrected to water level using tide prediction data.
- PSM0644 is inter-visible to PSM0645

### General site condition & access:

- located at south side of the harbor on quay wall corner.
- visible and easily accessible.

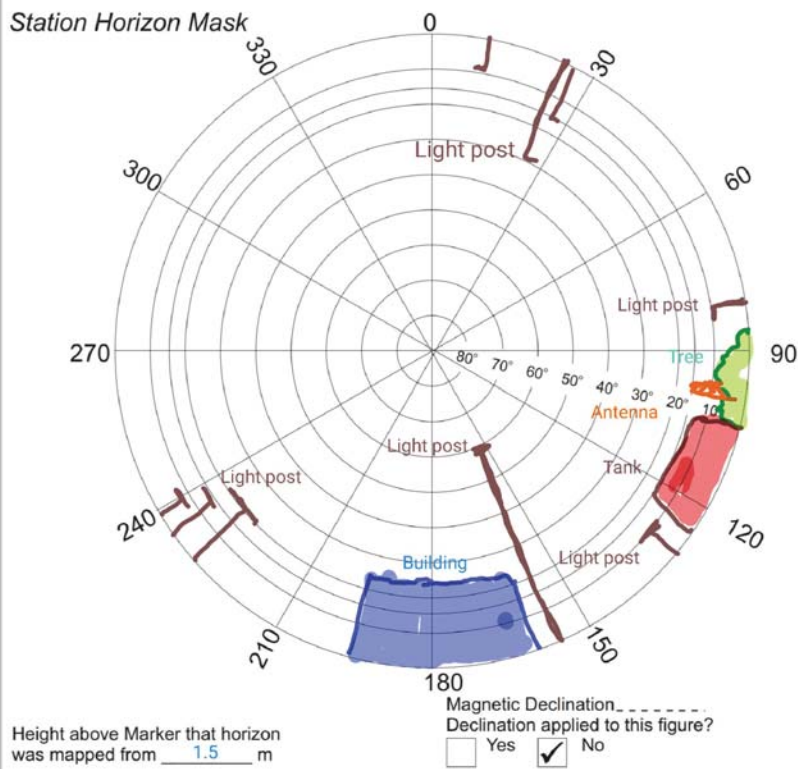
**Owner:** Dhuvaafaru council



**SITE INFORMATION**

Station Number

P	S	M	0	6	4	4
---	---	---	---	---	---	---



Locality



Sketched by: saeed

Scale: Not to scale

Date: 13-Jan-24



# MALDIVES LAND AND SURVEY AUTHORITY

MINISTRY OF HOUSING AND INFRASTRUCTURE

Office (PABX): +(960) 3004300, Fax: +(960) 3004254

Ameenee Magu, Maafannu, Male', 20392, Maldives.

Email: survey@housing.gov.mv

Web: www. surveyofmaldives.gov.mv



<b>CONTROL POINT DETAILS</b>	<b>Station Number</b> PSM0645
<b>Coordinate Information</b>	
<b>Geodetic</b>	<b>Grid</b>
<b>WGS 84</b>	<b>UTM Zone 43</b>
Lat: 5°37'40.98431"N	E: 282757.587
Long: 73°02'19.25556"E	N: 622453.569
Ellp Height: -95.144	Orth Height: 1.020
<b>Island Name:</b> R.Dhuvaafaru( LD0790 )	<b>Date:</b> 13-Jan-24

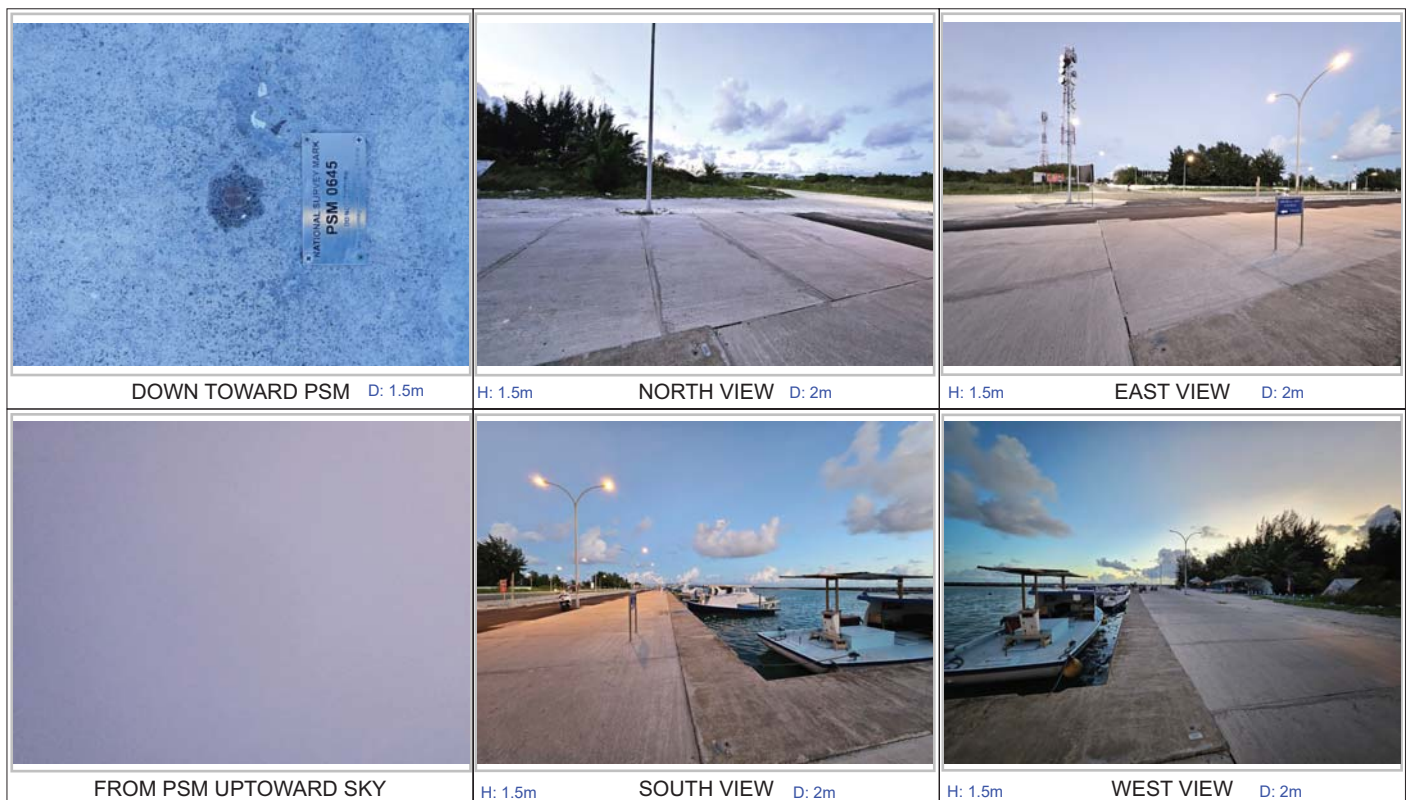
### Monument description & method of survey:

- Hex bolt driven to the Quay wall corner , center marked with cross
- PSM plate label attached with screws to the quay wall showing PSM number
- finished to quay wall level .
- Static Survey 3D control by GNSS post processing.
- The vertical elevation related MSL was transferred from PSM0644 by GNSS static post processing.
- PSM0644 is inter-visible to PSM0645

### General site condition & access:

- located at north side of the harbour on quay wall corner.
- visible and easily accessible.

**Owner:** Dhuvaafaru council

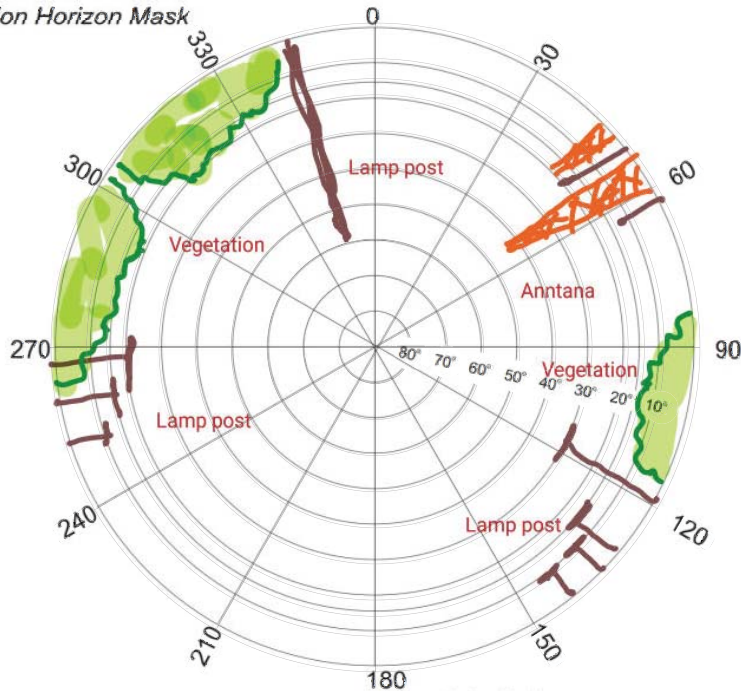


**SITE INFORMATION**

Station Number

P	S	M	0	6	4	5
---	---	---	---	---	---	---

*Station Horizon Mask*



*Locality*



Height above Marker that horizon was mapped from 1.5 m

Magnetic Declination \_\_\_\_\_  
 Declination applied to this figure?  Yes  No  
 Created by Notein



Sketched by: saeed

Scale: Not to scale

Date: 13-Jan-24



# MALDIVES LAND AND SURVEY AUTHORITY

MINISTRY OF HOUSING AND INFRASTRUCTURE

Office (PABX): +(960) 3004300, Fax: +(960) 3004254

Ameenee Magu, Maafannu, Male', 20392, Maldives.

Email: survey@housing.gov.mv

Web: www. surveyofmaldives.gov.mv



<b>CONTROL POINT DETAILS</b>	<b>Station Number</b> PSM0646
<b>Coordinate Information</b>	
<b>Geodetic</b>	<b>Grid</b>
<b>WGS 84</b>	<b>UTM Zone 43</b>
Lat: 5°37'42.35230"N	E: 283173.791
Long: 73°02'32.77311"E	N: 622494.203
Ellp Height: -95.091	Orth Height: 1.086
<b>Island Name:</b> R.Dhuvaafaru( LD0790 )	<b>Date:</b> 13-Jan-24

### Monument description & method of survey:

- Concrete cast in-situ (cast on-site) with a diameter of 0.3m and 1.2m in length.
- A 1m long PVC pipe with a diameter of 0.3m was used as a casing for the concrete.
- A 1.5m long stainless steel (s/s) rod was driven to the ground and used to reinforce the monument.
- 0.10m long SS bolt marked with cross as a center point of PSM.
- The monument was labeled with a stainless steel plate stating the point identification.
- The monument was finished 0.2m above ground level.

- GNSS static survey was conducted for post-processing to determine the 3D coordinates of the monument.
- The vertical elevation related MSL was transferred from PSM0644 by GNSS static post processing.

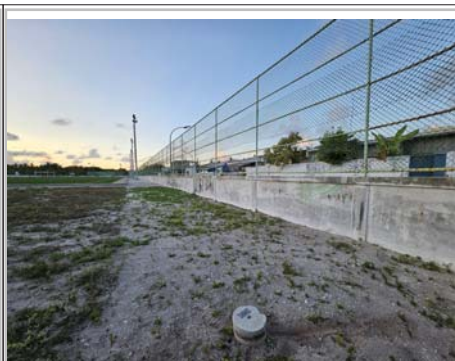
### General site condition & access:

- located at east corner of stadium.
- easily accessible.

**Owner:** Dhuvaafaru council



DOWN TOWARD PSM D: 1.5m



NORTH VIEW D: 2m



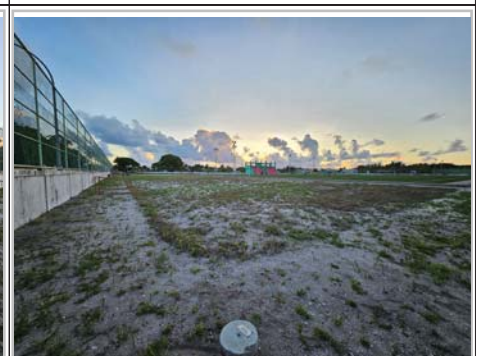
EAST VIEW D: 2m



FROM PSM UPTOWARD SKY



SOUTH VIEW D: 2m



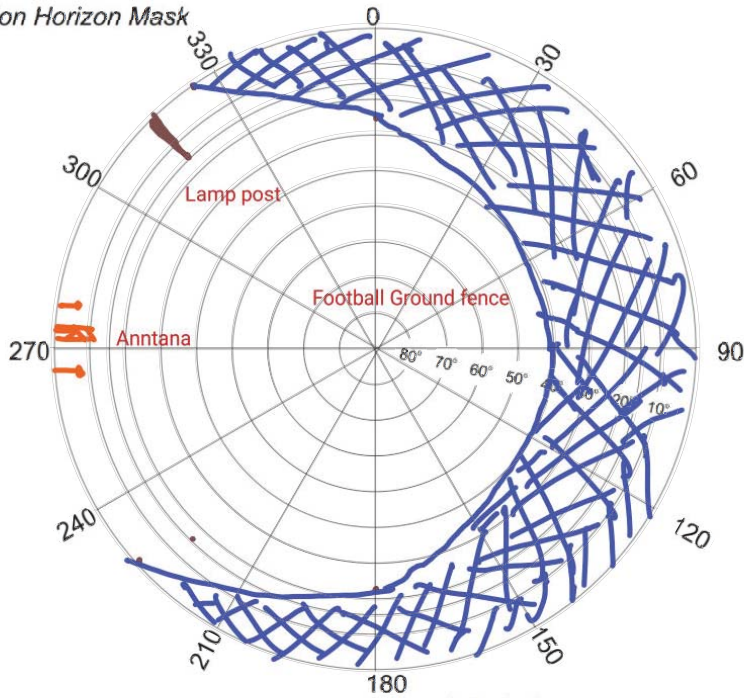
WEST VIEW D: 2m

**SITE INFORMATION**

Station Number

P	S	M	0	6	4	6
---	---	---	---	---	---	---

Station Horizon Mask

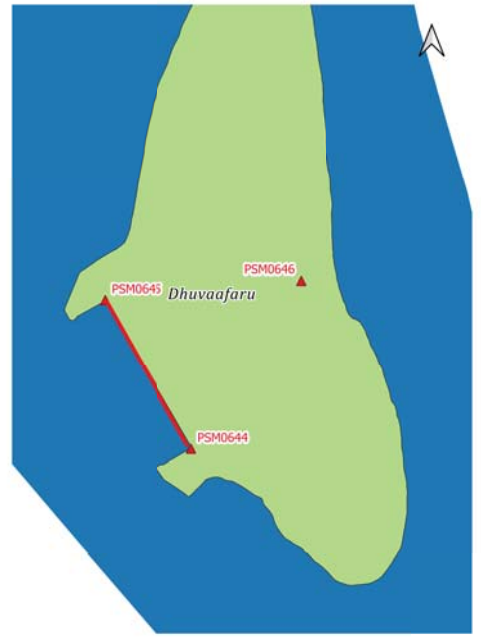


Height above Marker that horizon was mapped from 1.5 m

Magnetic Declination \_\_\_\_\_  
 Declination applied to this figure?  
 Yes  No

Created by Notein

Locality



Sketched by: saeed

Scale: Not to scale

Date: 13-Jan-24