

MALDIVES LAND AND SURVEY AUTHORITY

Ameenee Magu, Maafannu, Maale, 20392, Maldives.
 Office: +(960) 7384892
 Email: survey@mlsa.gov.mv
 Web: www.mlsa.gov.mv



CONTROL POINT DETAILS		Station Number PSM0635	
Coordinate Information			
Geodetic		Grid	
WGS 84		UTM Zone 43	
Lat: 5°50'05.05501"N		E: 331512.199	
Long: 73°28'41.47124"E		N: 645163.657	
Ellp Height: -96.231		Orth Height: 1.373	
Island Name: N.Maafaru (LD0560)		Date: 1-Apr-24	

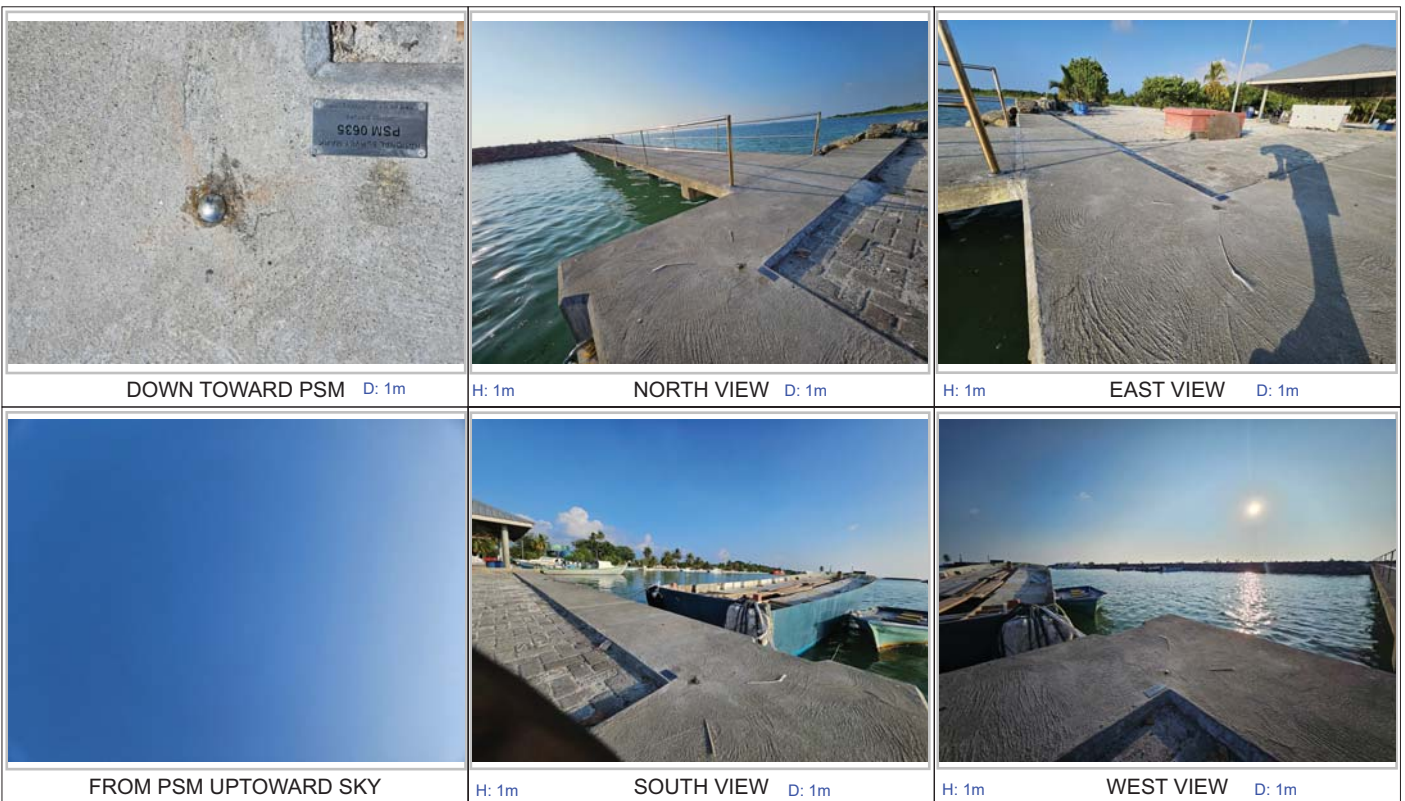
Monument description & method of survey:

- Mushroom bolt driven to the Quay wall corner , center marked punched and PSM plate label attached with screws to the quay wall showing PSM number
- finished to quay wall level .
- Static Survey 3D control by GNSS post processing.
- Vertical datum MSL,height related to MSL transferred from PSM0637
- PSM0635 is inter-visible to PSM0637

General site condition & access:

- located at North corner of quay wall near the fish landing hut and bridge to break water.
- easily accessible.

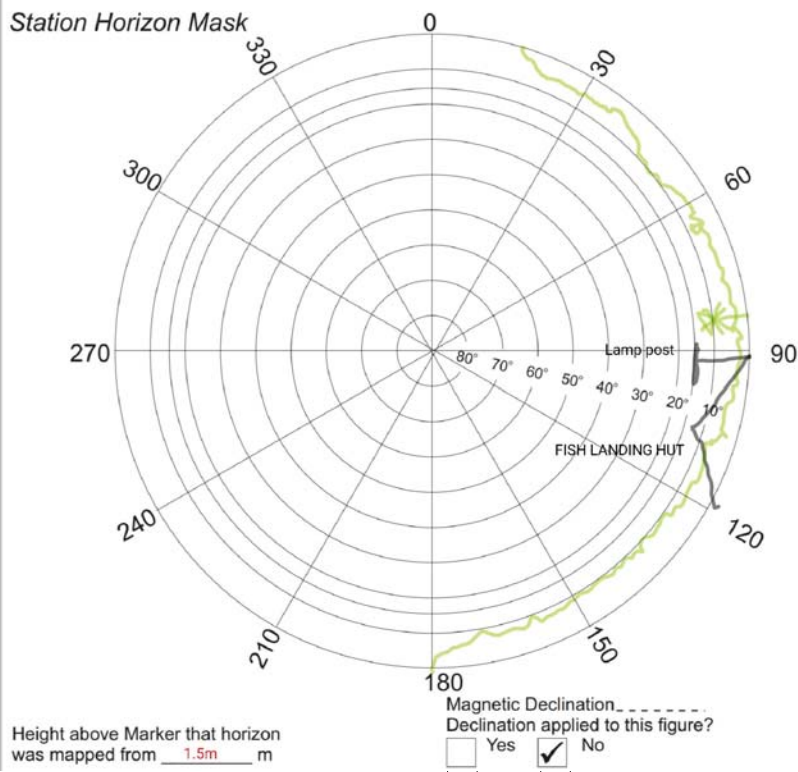
Owner: Island Council



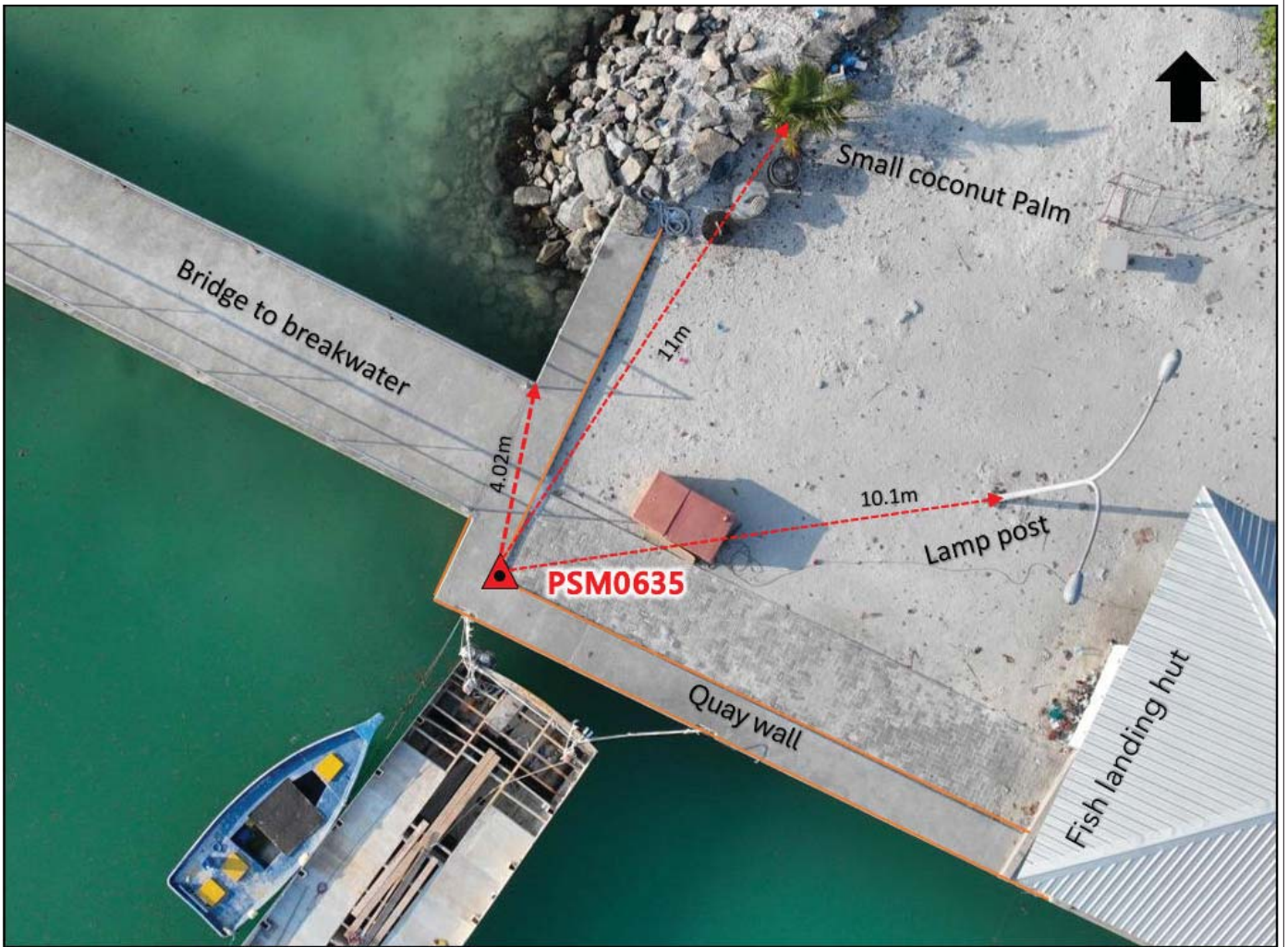
SITE INFORMATION

Station Number

P S M 0 6 3 5



Locality



Sketched by: Saeed

Scale: Not to scale

Date: 1-Apr-24

MALDIVES LAND AND SURVEY AUTHORITY

Ameenee Magu, Maafannu, Maale, 20392, Maldives.
 Office: +(960) 7384892
 Email: survey@mlsa.gov.mv
 Web: www.mlsa.gov.mv



CONTROL POINT DETAILS		Station Number PSM0636	
Coordinate Information			
Geodetic		Grid	
WGS 84		UTM Zone 43	
Lat: 5°49'47.10267"N		E: 331686.605	
Long: 73°28'47.18923"E		N: 644611.747	
Ellp Height: -96.528		Orth Height: 1.090	
Island Name: N.Maafaru (LD0560)		Date: 1-Apr-24	

Monument description & method of survey:

- Concrete casted in situ to diameter 0.254m pvc pipe, 1m in length, 1.5m s/s rod driven to ground as the centre with cross a mark. Monument labelled with s/s plate stating the point No
- Finished to the Ground level
- Static Survey 3D control by GNSS post processing.
- Vertical datum MSL,height related to MSL transferred from PSM0637

General site condition & access:

- Located at the edge of curb on west side of turf ground.
- easily accessible.

Owner: Council



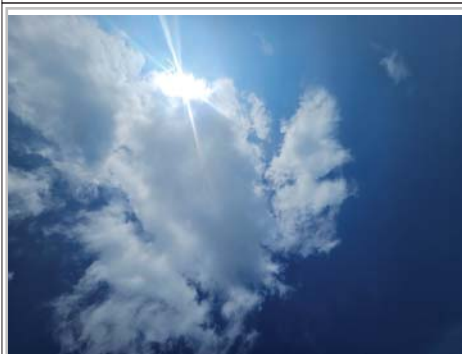
DOWN TOWARD PSM D: 1m



NORTH VIEW D: 1m



EAST VIEW D: 1m



FROM PSM UPTOWARD SKY



SOUTH VIEW D: 1m

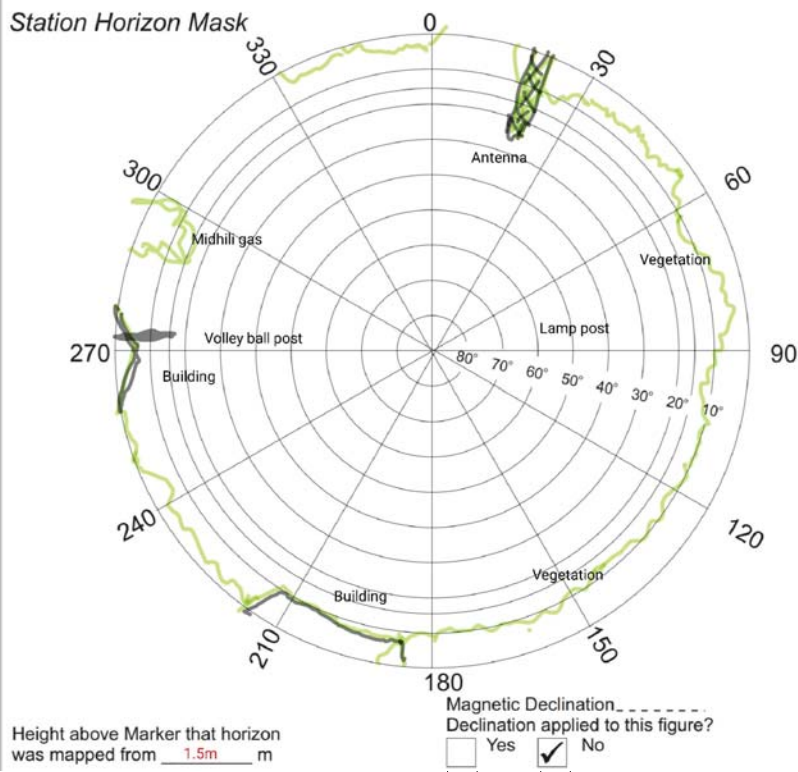


WEST VIEW D: 1m

SITE INFORMATION

Station Number

P	S	M	0	6	3	6
---	---	---	---	---	---	---



Locality



Sketched by: Saeed

Scale: Not to scale

Date: 1-Apr-24

MALDIVES LAND AND SURVEY AUTHORITY

Ameenee Magu, Maafannu, Maale, 20392, Maldives.
 Office: +(960) 7384892
 Email: survey@mlsa.gov.mv
 Web: www.mlsa.gov.mv



CONTROL POINT DETAILS	Station Number PSM0637
Coordinate Information	
Geodetic	Grid
WGS 84	UTM Zone 43
Lat: 5°49'56.78445"N	E: 331470.932
Long: 73°28'40.15200"E	N: 644909.723
Ellp Height: -96.202	Orth Height: 1.396
Island Name: N.Maafaru (LD0560)	Date: 1-Apr-24

Monument description & method of survey:

- Mushroom bolt-driven to the Quay wall corner , center marked punched and PSM plate label attached with screws to the quay wall showing PSM number
- finished to quay wall level
- GNSS Static Survey post Processing.Method of Observation
- Vertical height corrected using tide prediction data Vertical Height Correction Method
- PSM0635 is inter-visible to PSM0637

General site condition & access:

- located at South corner of quay wall.
- easily accessible.

Owner: Council



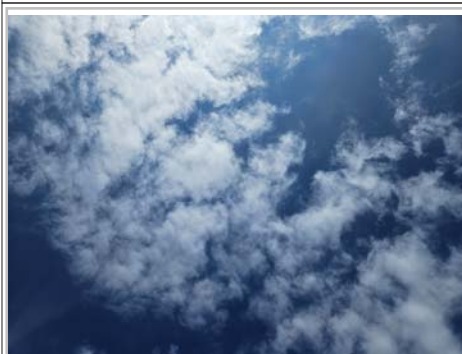
DOWN TOWARD PSM 1m



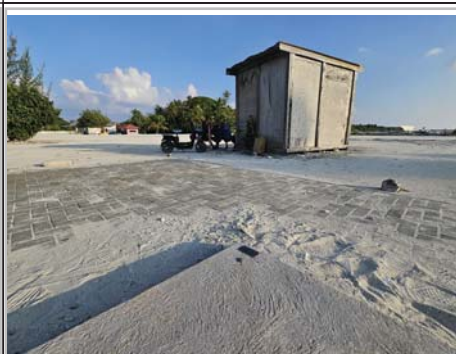
H: 1.5m NORTH VIEW D: 3m



H: 1.5m EAST VIEW D: 3m



FROM PSM UPTOWARD SKY



H: 1.5m SOUTH VIEW D: 3m

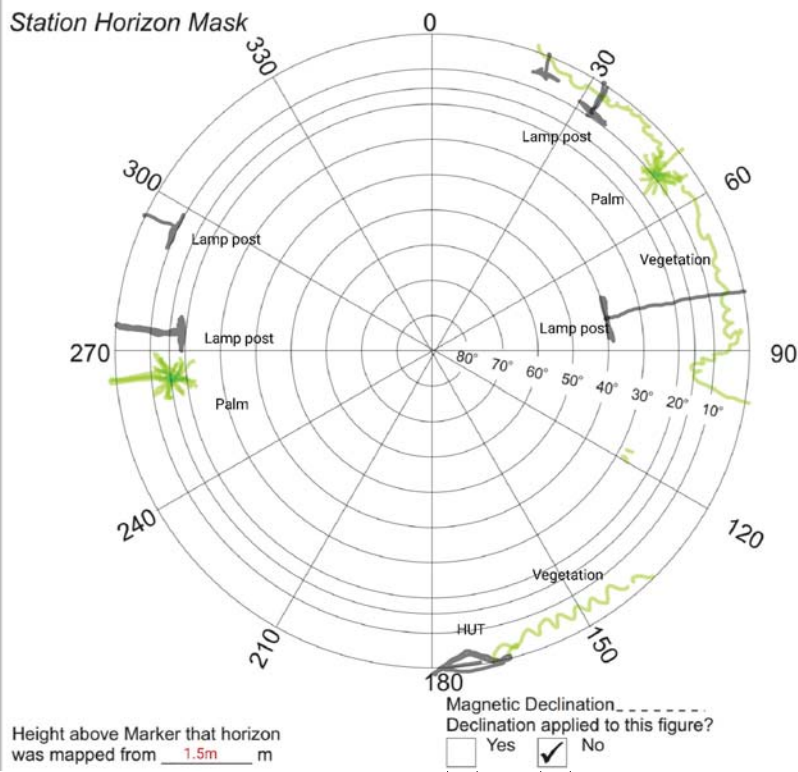


H: 1.5m WEST VIEW D: 3m

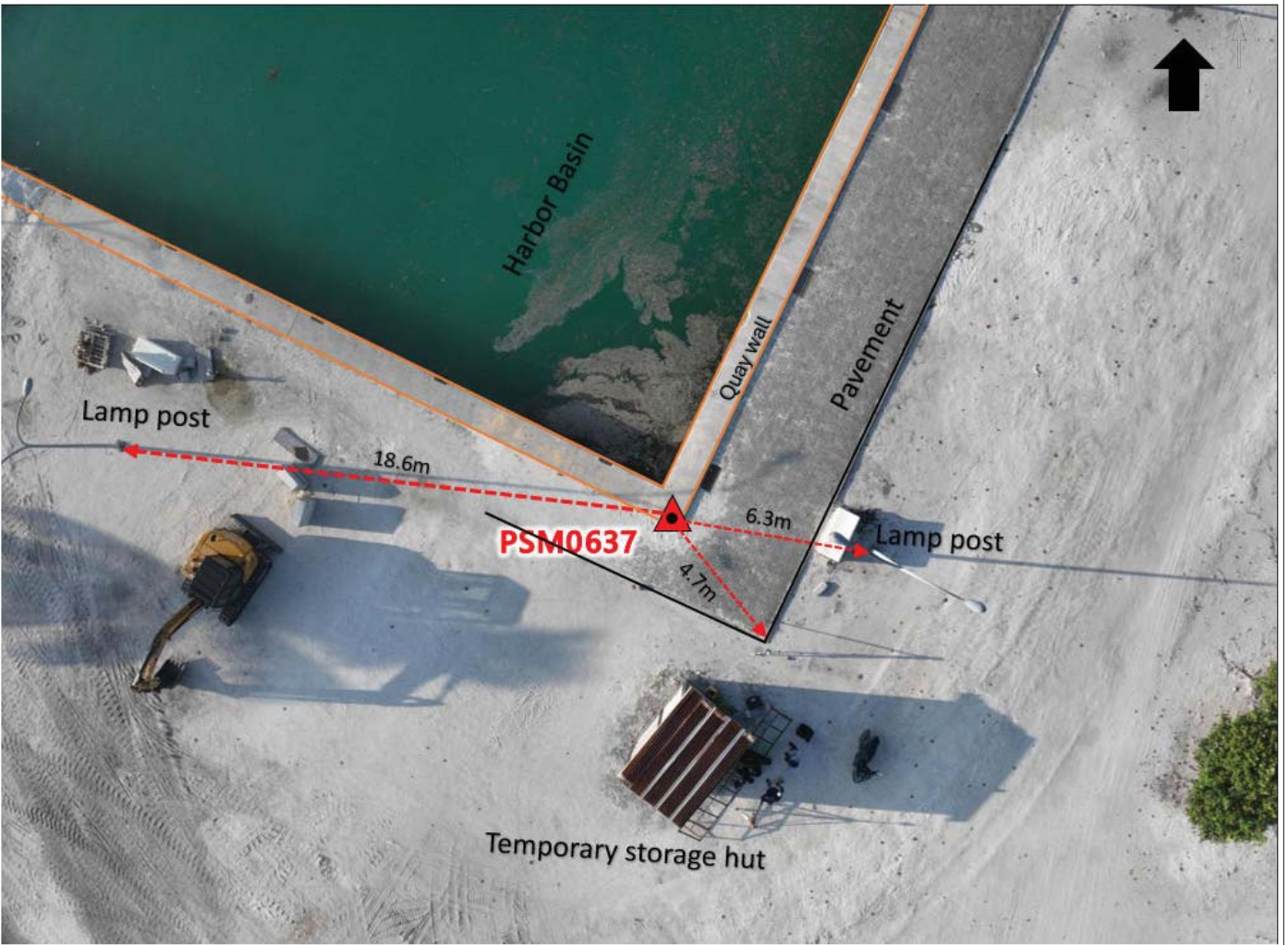
SITE INFORMATION

Station Number

PSM 0637



Locality



Sketched by: saeed

Scale: Not to scale

Date: 1-Apr-24