

MALDIVES LAND AND SURVEY AUTHORITY

Ameenee Magu, Maafannu, Maale, 20392, Maldives.
 Office: +(960) 7384892
 Email: survey@mlsa.gov.mv
 Web: www.mlsa.gov.mv



CONTROL POINT DETAILS	Station Number PSM0626
Coordinate Information	
Geodetic	Grid
WGS 84	UTM Zone 43
Lat: 5°16'42.02625"N	E: 345818.027
Long: 73°36'31.24701"E	N: 583604.018
Ellp Height: -96.643	Orth Height: +1.122
Island Name: Lh. Olhuvelifushi , LD0517	Date: 6-Apr-24

Monument description & method of survey:

- Concrete casted in situ to a diameter 0.3m pvc pipe, 1m in length, 1.5m s/s rod driven to ground as the centre mark punched .Monument labelled with s/s plate stating the point
- Below 100mm Final Ground level
- GNSS Static Survey post Processing. Method of Observation
- Vertical datum MSL, Height related to MSL transferred from PSM0628

General site condition & access:

- Located at Anbareemagu and Beyrumagu junction.
- Easily accessible

Owner: Lh. Olhuvelifushi Council

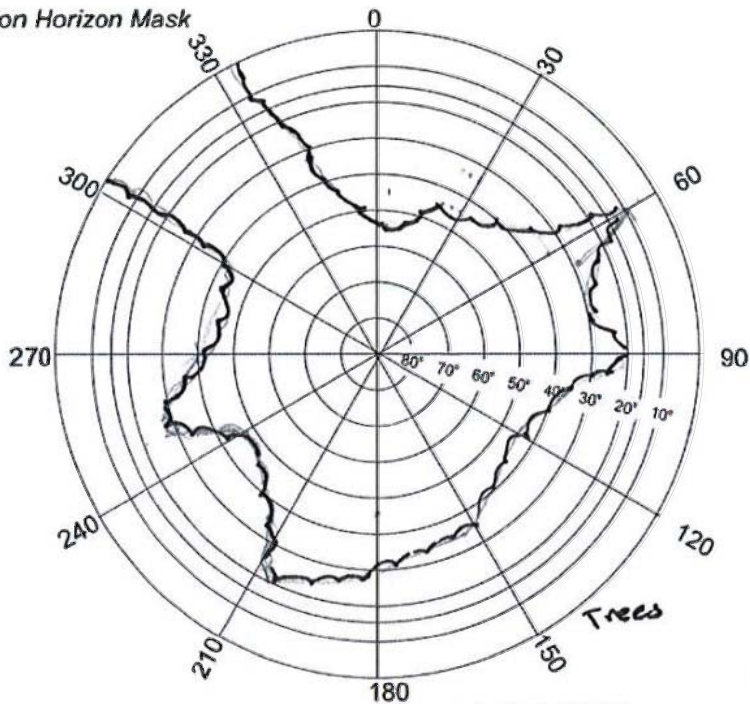


SITE INFORMATION

Station Number

P	S	M	0	6	2	6
---	---	---	---	---	---	---

Station Horizon Mask

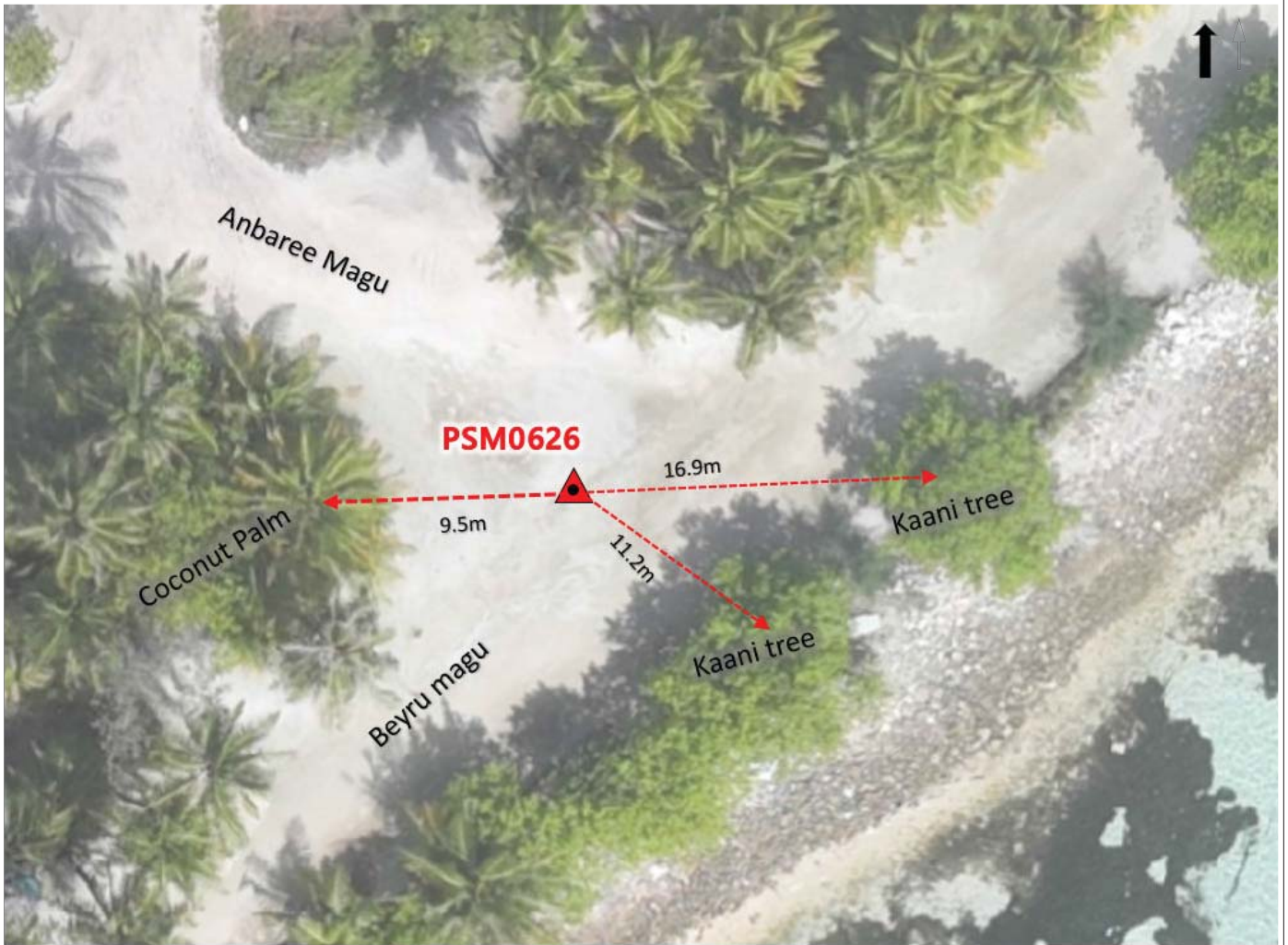


Height above Marker that horizon was mapped from 1.5 m

Magnetic Declination
Declination applied to this figure?
 Yes No



Locality



Sketched by: [Zihan Fareen](#)

Scale: Not to scale

Date: [6-Apr-24](#)

MALDIVES LAND AND SURVEY AUTHORITY

Ameenee Magu, Maafannu, Maale, 20392, Maldives.
 Office: +(960) 7384892
 Email: survey@mlsa.gov.mv
 Web: www.mlsa.gov.mv



CONTROL POINT DETAILS	Station Number PSM0627
Coordinate Information	
Geodetic	Grid
WGS 84	UTM Zone 43
Lat: 5°16'49.36379"N	E: 345706.123
Long: 73°36'27.59606"E	N: 583829.637
Ellp Height: -96.684	Orth Height: +1.066
Island Name: Lh. Olhuvelifushi , LD0517	Date: 6-Apr-24

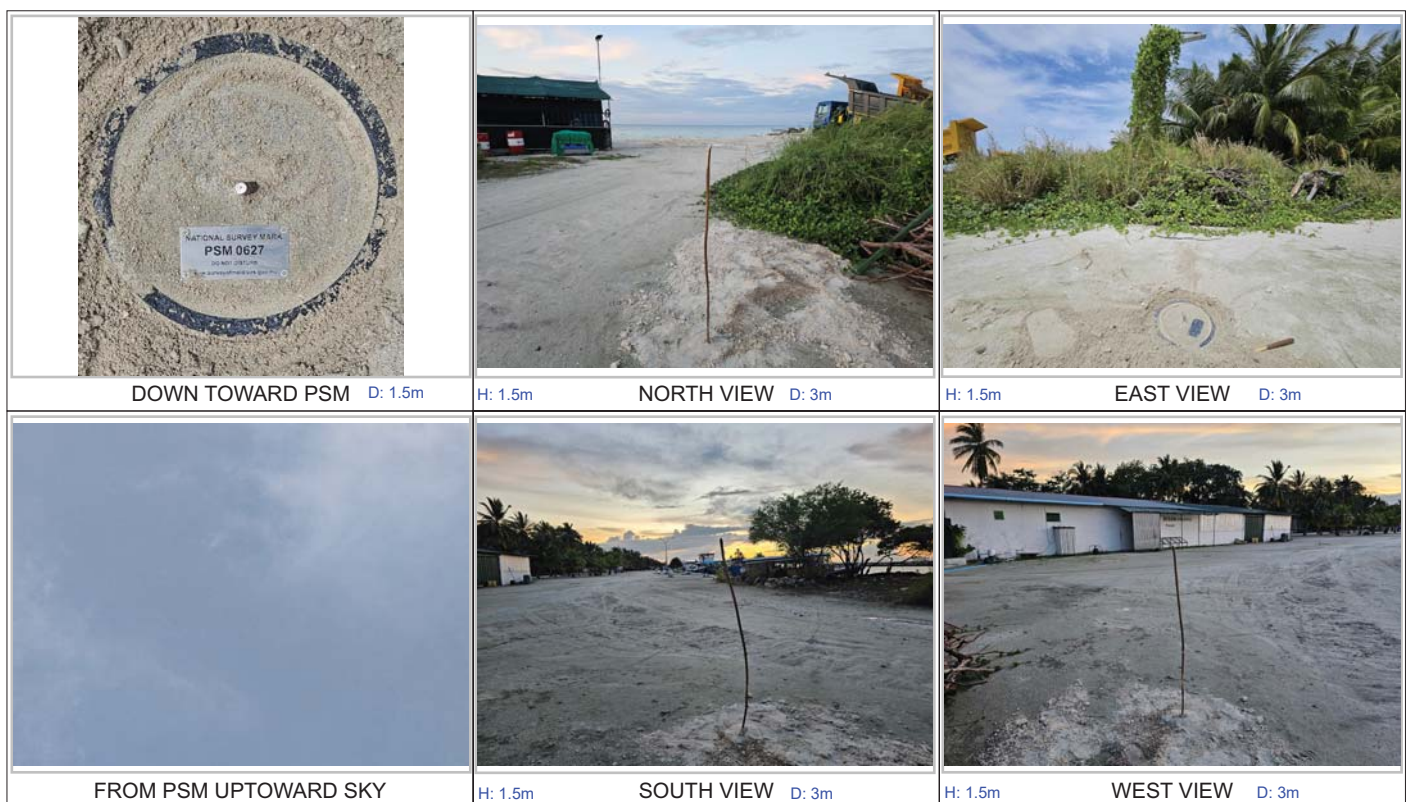
Monument description & method of survey:

- Concrete casted in situ to a diameter 0.3m pvc pipe, 1m in length, 1.5m s/s rod driven to ground and the centre mark punched .Monument labelled with s/s plate stating the point
- Below 100mm Final Ground level
- Intervisible to PSM 0628
- GNSS Static Survey post Processing. Method of Observation
- Vertical datum MSL, Height related to MSL transferred from PSM0628

General site condition & access:

- Located in a clear area in front of Childrens park
- Easily accessible

Owner: Lh. Olhuvelifushi Council

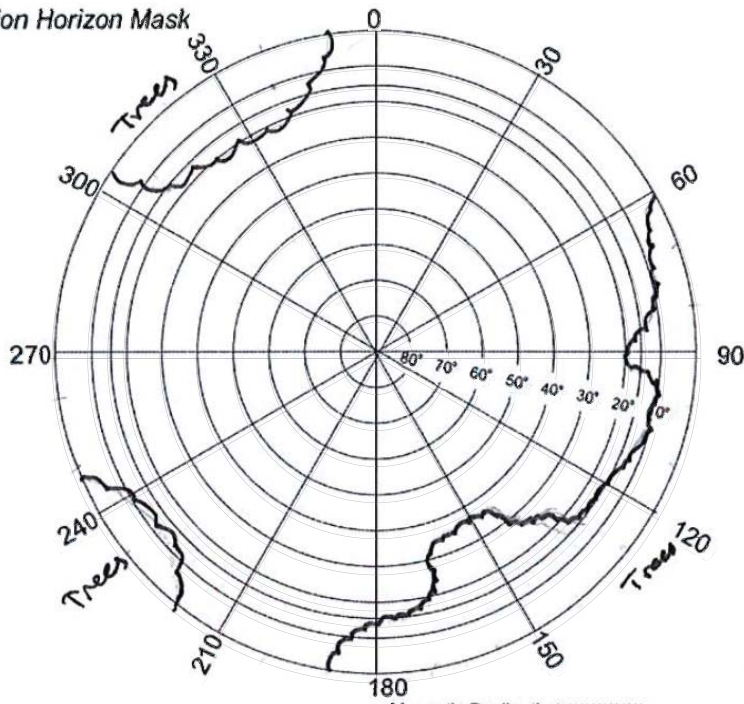


SITE INFORMATION

Station Number

P S M 0 6 2 7

Station Horizon Mask



Height above Marker that horizon was mapped from 1.5 m

Magnetic Declination
Declination applied to this figure?
 Yes No

Locality



Sketched by: [Zihan Fareen](#)

Scale: Not to scale

Date: [6-Apr-24](#)

MALDIVES LAND AND SURVEY AUTHORITY

Ameenee Magu, Maafannu, Maale, 20392, Maldives.
 Office: +(960) 7384892
 Email: survey@mlsa.gov.mv
 Web: www.mlsa.gov.mv



CONTROL POINT DETAILS	Station Number PSM0628
Coordinate Information	
Geodetic	Grid
WGS 84	UTM Zone 43
Lat: 5°16'45.87146"N	E: 345572.131
Long: 73°36'23.25182"E	N: 583722.672
Ellp Height: -96.783	Orth Height: +0.961
Island Name: Lh. Olhuvelifushi (LD0517)	Date: 6-Apr-24

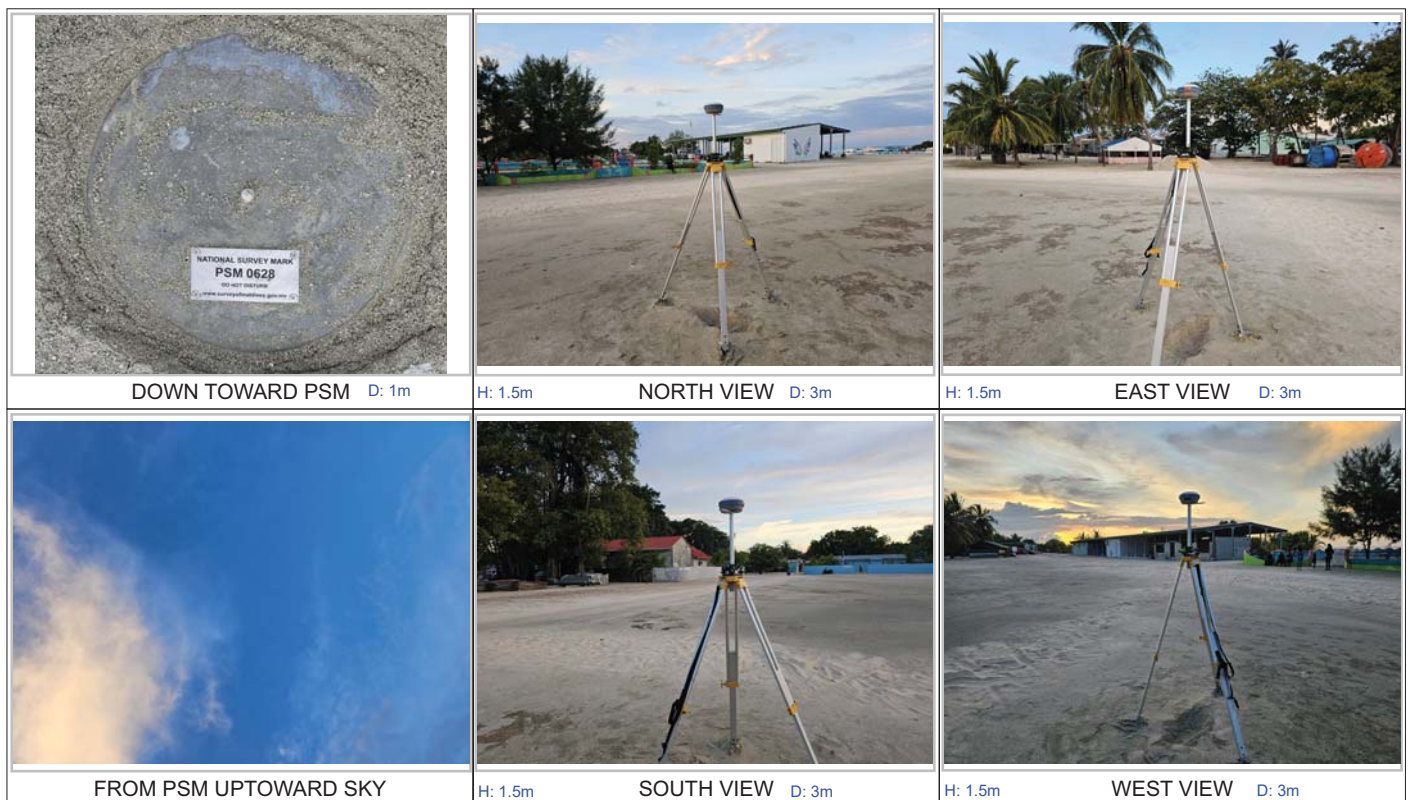
Monument description & method of survey:

- Concrete casted in situ to adiameter 0.3m pvc pipe,1m in length, 1.5m s/s rod driven to ground as the centre marked with punch.Monument labelled with s/s plate stating the point
- 00mm Below 1 Ground level
- Intervisible to PSM 0627
- GNSS Static Survey post Processing.Method of Observation
- vertical Datum MSL , Vertical height corrected using tide prediction data vertical Height Correction Method.

General site condition & access:

- Located in a clear area infront of Childrens park
- Easily accessible

Owner: Lh. Olhuvelifushi Island Council

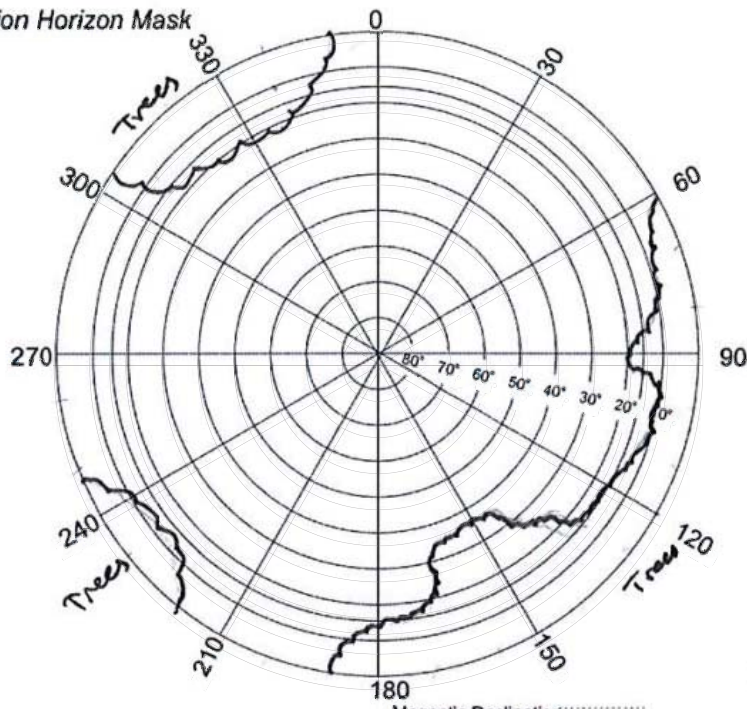


SITE INFORMATION

Station Number

P	S	M	0	6	2	8
---	---	---	---	---	---	---

Station Horizon Mask



Height above Marker that horizon was mapped from 1.5 m

Magnetic Declination Declination applied to this figure?
 Yes No

Locality



Sketched by: [Zihan Fareen](#)

Scale: Not to scale

Date: [6-Apr-24](#)