

MALDIVES LAND SURVEY AUTHORITY

MINISTRY OF HOUSING AND INFRASTRUCTURE
 Office (PABX): +(960) 3004300, Fax: +(960) 3004254
 Email: survey@housing.gov.mv
 Web: www.surveyofmaldives.gov.mv,
 Ameenee Magu, Maafannu, Male', 20392, Maldives.



CONTROL POINT DETAILS	Station Number	PSM 0500
Coordinate Information		
Geodetic	Grid	
WGS 84	UTM Zone 43	
Lat: 5°29'31.46375"N	E: 324394.317m	
Long: 73°24'53.44809"E	N: 607290.283m	
Ellp Height: -97.052	Orth Height: +1.141	
Island Name: LH. HINNAVARU	Date: 09 th OCTOBER 2021	

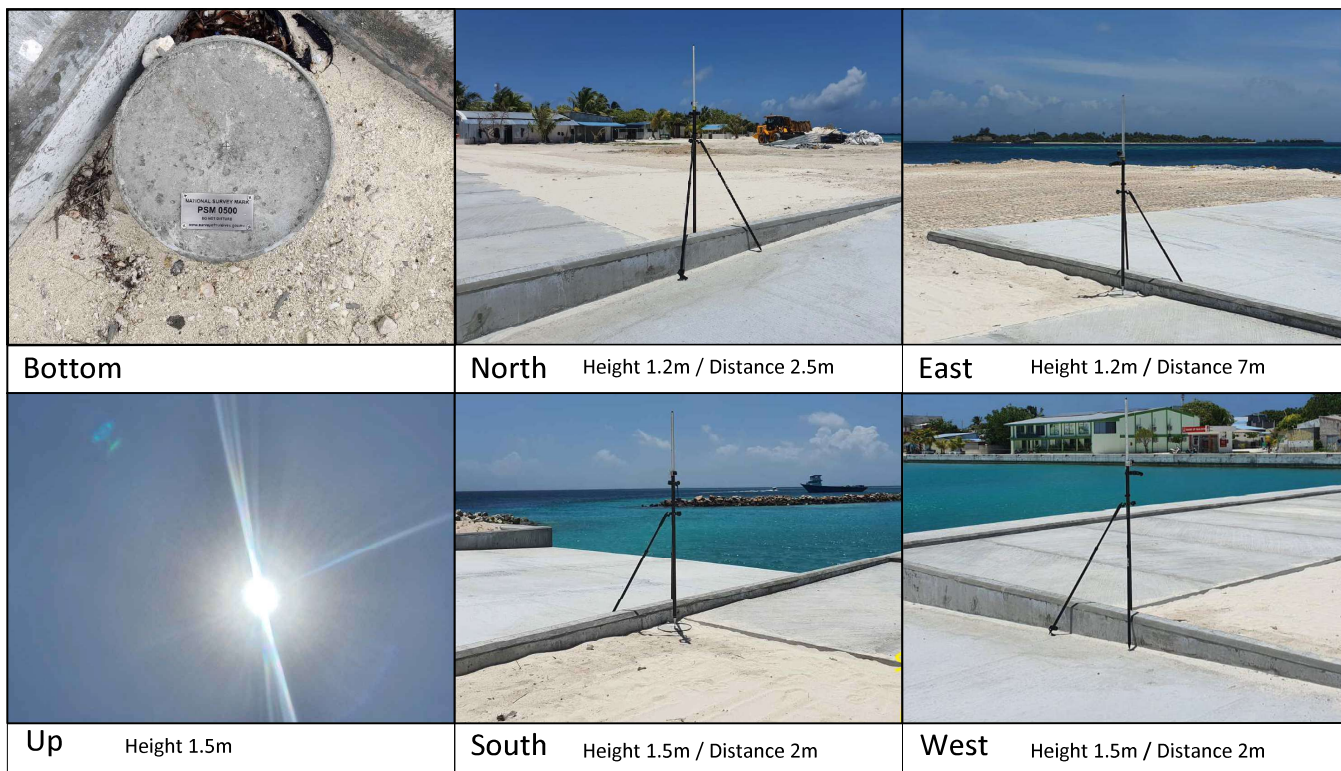
Monument description & method of survey:

- Monument Type A as in Technical Brief
- Stainless steel plate fixed to concrete by Four bolts
- Horizontal coordinates fixed by GNSS Static survey.
- Elevation reduced relative to ellipsoid height difference, Reference to PSM 0501 which was corrected to Meanwater level by tide prediction table (H.Dh.Hanimaadhoo)
- PSM 0500 is 40mm above the ground Level

General site condition & access:

- Easily accessible area with wide angle of sky visibility
- Located in north east harbour near the ramp.

Owner: Secretariat of Lh.Hinnavaru Council

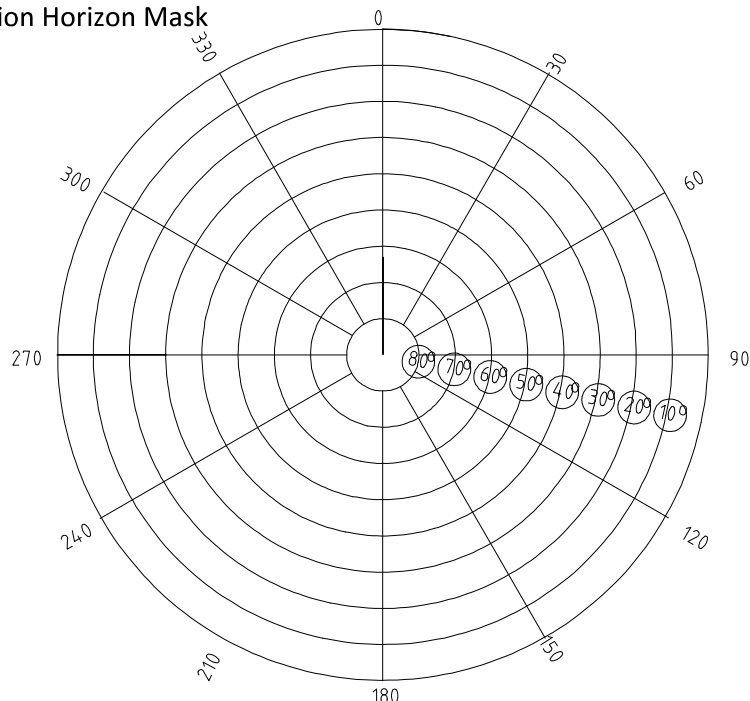


SITE INFORMATION

Station Number

P	S	M	0	5	0	0
---	---	---	---	---	---	---

Station Horizon Mask



Height above Marker that horizon was mapped from 1.5m

Magnetic Declination Declination applied to this figure?
 Yes No



Sketched by: Hussain Sajid

Scale: Not to Scale

Date: 10th October 2021

MALDIVES LAND SURVEY AUTHORITY

MINISTRY OF HOUSING AND INFRASTRUCTURE
 Office (PABX): +(960) 3004300, Fax: +(960) 3004254
 Email: survey@housing.gov.mv
 Web: www.surveyofmaldives.gov.mv,
 Ameenee Magu, Maafannu, Male', 20392, Maldives.



CONTROL POINT DETAILS	Station Number	PSM 0501
Coordinate Information		
Geodetic	Grid	
WGS 84	UTM Zone 43	
Lat: 5°29'24.95587"N	E:	324097.498m
Long: 73°24'43.82219"E	N:	607091.164m
Ellp Height: -97.166	Orth Height:	+1.027
Island Name: LH. HINNAVARU	Date:	09th October 2021

Monument description & method of survey:

- Monument Type A as in Technical Brief
- Stainless steel plate fixed to concrete by Four bolts
- Horizontal coordinates fixed by GNSS Static survey.
- Vertical height corrected using tide prediction data (H.Dh.Hanimaadhoo)
- PSM 0501 is 30mm below ground Level

General site condition & access:

- Easily accessible area with wide angle of sky visibility
- Located in harbor south west corner

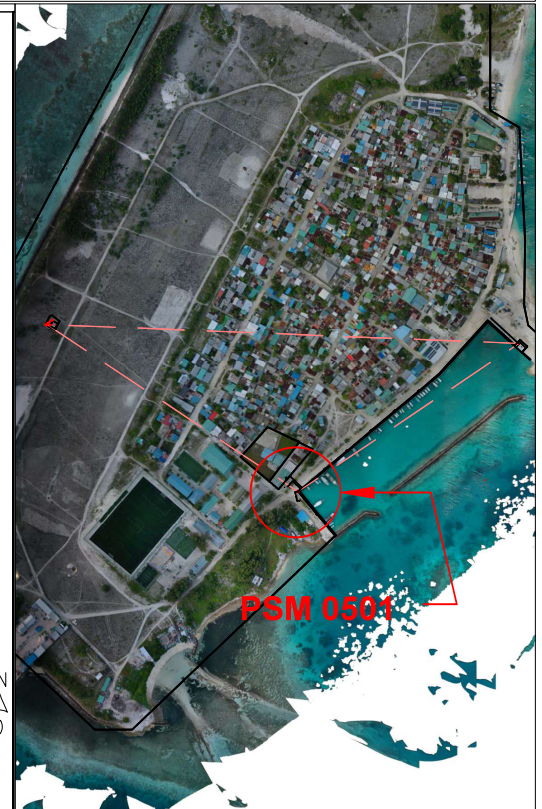
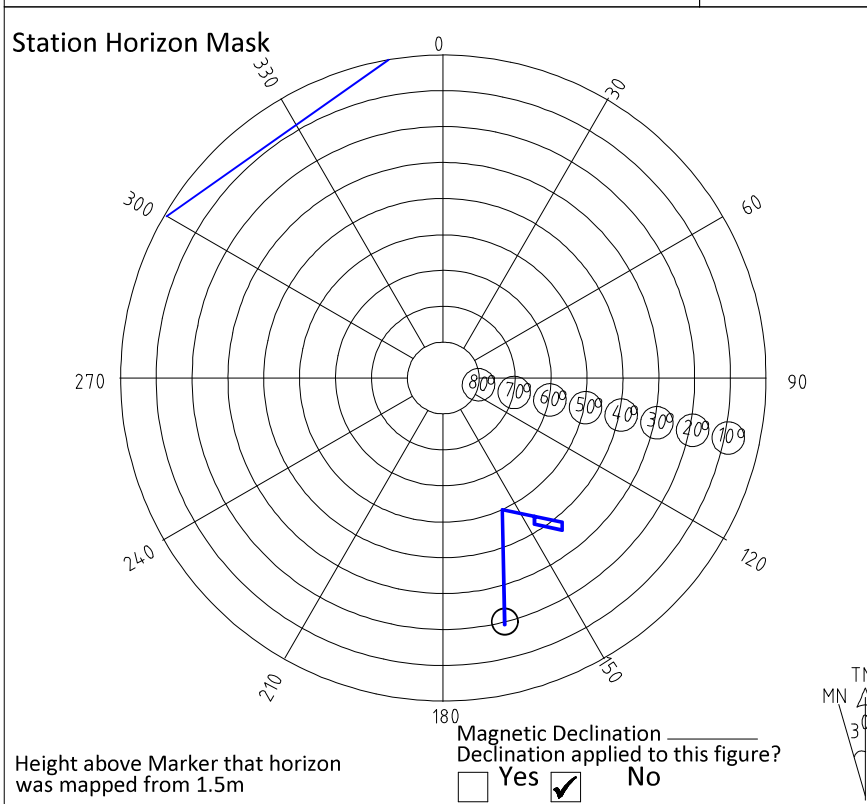
Owner: Secretariat of Lh.Hinnavaru Council



SITE INFORMATION

Station Number

P	S	M	0	5	0	1
---	---	---	---	---	---	---



Sketched by: Hussain Sajid

Scale: Not to Scale

Date: 10th October 2021

MALDIVES LAND SURVEY AUTHORITY

MINISTRY OF HOUSING AND INFRASTRUCTURE
 Office (PABX): +(960) 3004300, Fax: +(960) 3004254
 Email: survey@housing.gov.mv
 Web: www.surveyofmaldives.gov.mv,
 Ameenee Magu, Maafannu, Male', 20392, Maldives.



CONTROL POINT DETAILS	Station Number	PSM 0502
Coordinate Information		
Geodetic	Grid	
WGS 84	UTM Zone 43	
Lat: 5°29'32.21445"N	E:	323759.443m
Long: 73°24'32.82022"E	N:	607315.027m
Ellp Height: -96.541	Orth Height:	+1.652m
Island Name: LH HINNAVARU	Date: 09th OCTOBER 2021	

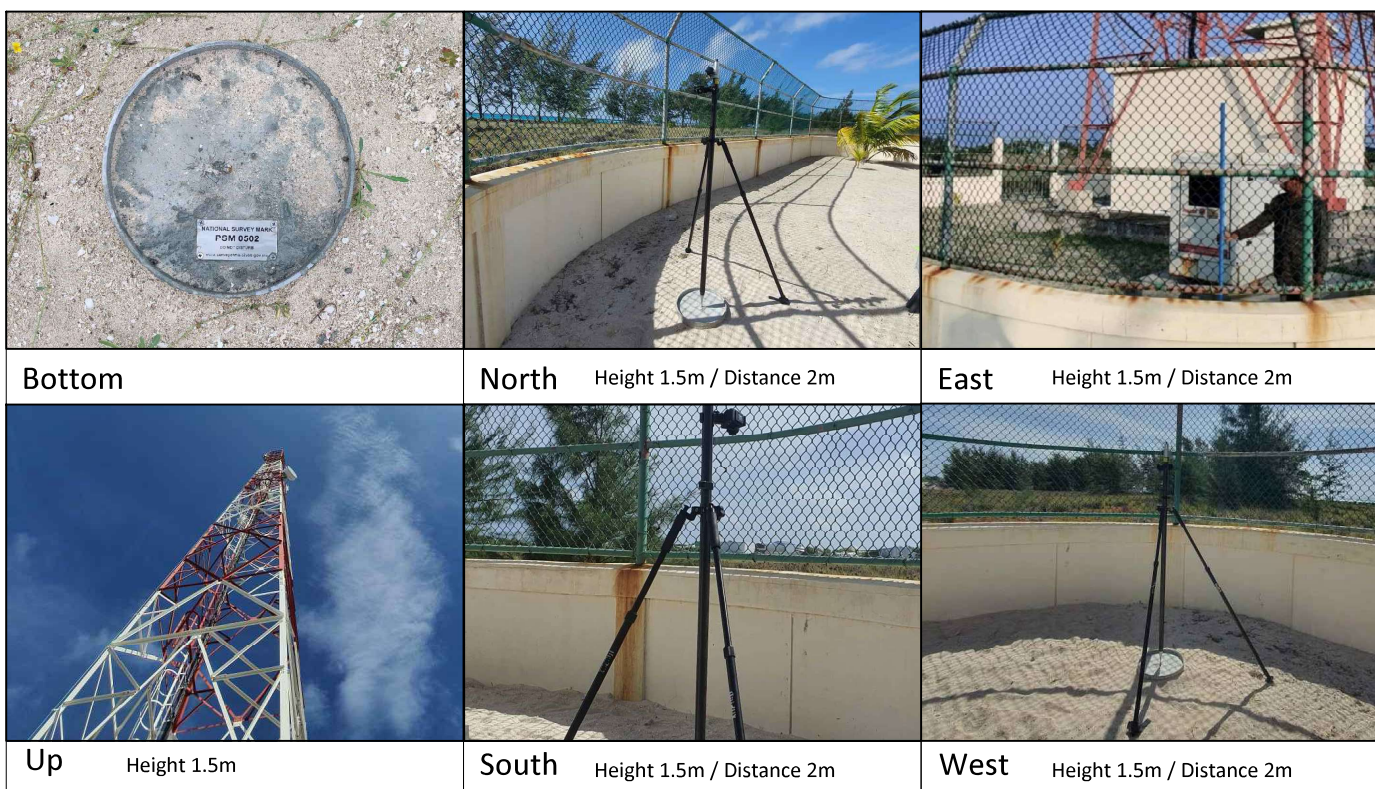
Monument description & method of survey:

- Monument Type A as in Technical Brief
- Stainless steel plate fixed to concrete by Four bolts
- Horizontal coordinates fixed by GNSS Static survey.
- Elevation reduced relative to ellipsoid height difference, reference to PSM 0501 which was corrected to Meanwater level bt tide prediction table (H.Dh.Hanimaadhoo)
- PSM 0502 is 45mm above ground Level

General site condition & access:

- Easily accessible area with wide angle of sky visibility
- Located in dhiraagu Antenna Premises

Owner: Secretariat of Lh.Hinnavaru Council

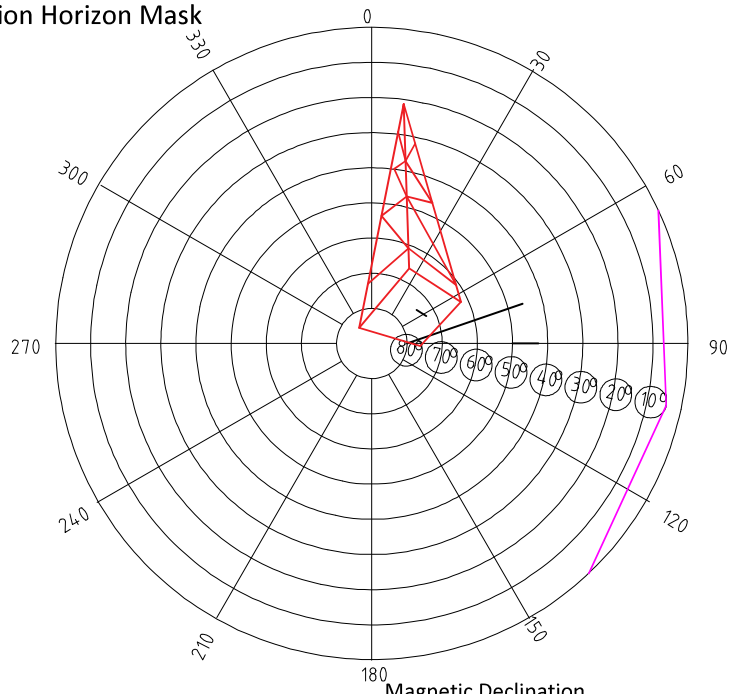


SITE INFORMATION

Station Number

P	S	M	0	5	0	2
---	---	---	---	---	---	---

Station Horizon Mask



Height above Marker that horizon was mapped from 1.5m

Magnetic Declination
Declination applied to this figure?
 Yes No



Sketched by: XXX

Scale: Not to Scale

Date: 24th FEBRUARY 2021