

MALDIVES LAND SURVEY AUTHORITY

MINISTRY OF HOUSING AND INFRASTRUCTURE

Office (PABX): +(960) 3004300, Fax: +(960) 3004254

Email: survey@housing.gov.mv

Web: www.surveyofmaldives.gov.mv,

Ameenee Magu, Maafannu, Male', 20392, Maldives.



CONTROLPOINT DETAILS	Station Number	PSM 5977
Coordinate Information		
Geodetic	Grid	
WGS 84	UTM Zone 43	
Lat: 3°51'35.22646N	E:	328607.694m
Long: 73°27'18.75741E	N:	426784.139m
Ellp Height: -92.365m	Orth Height:	+1.486m
Island Name: Bodufinolhu (LD1194)	Date:	25 August 2024

Monument description & method of survey:

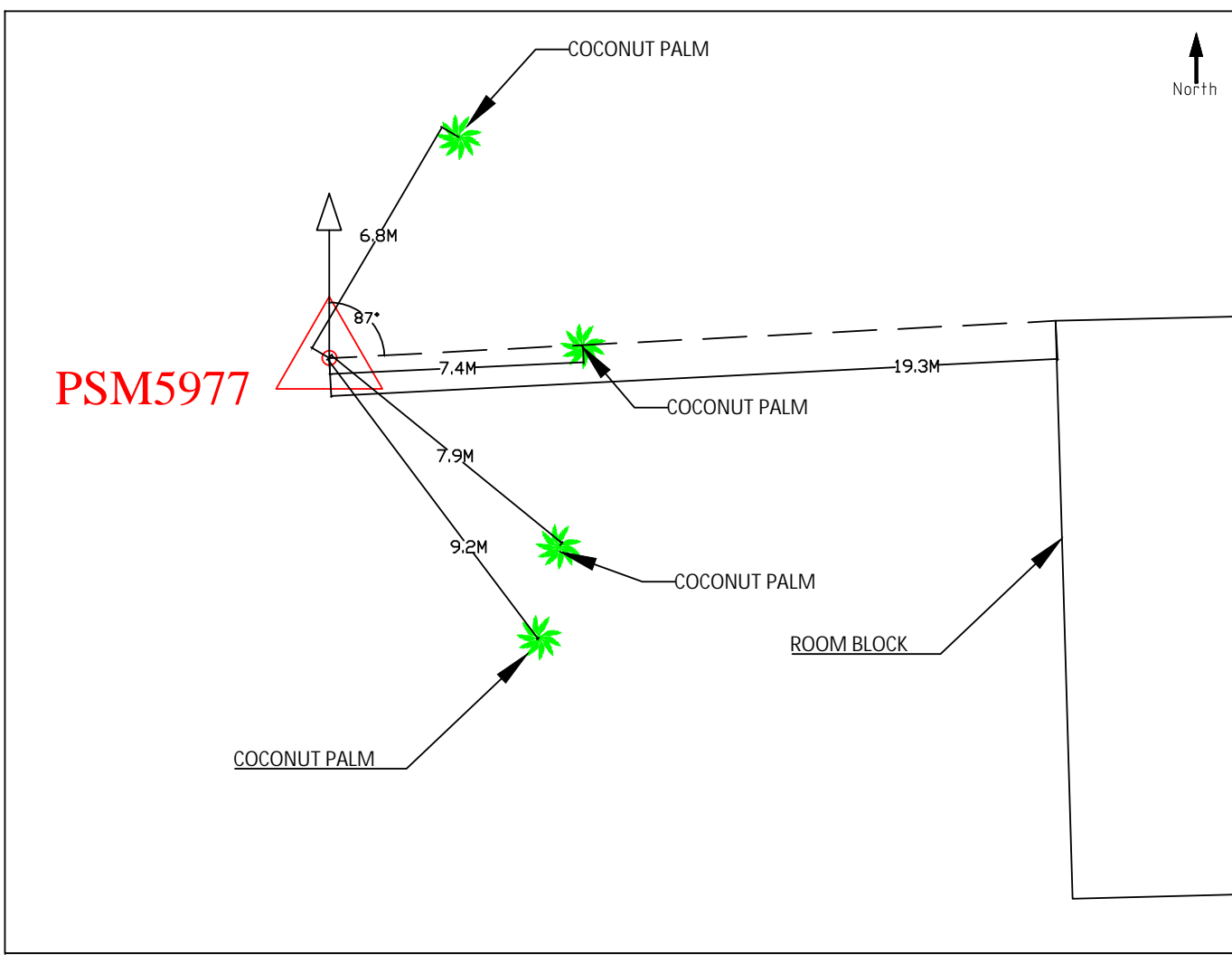
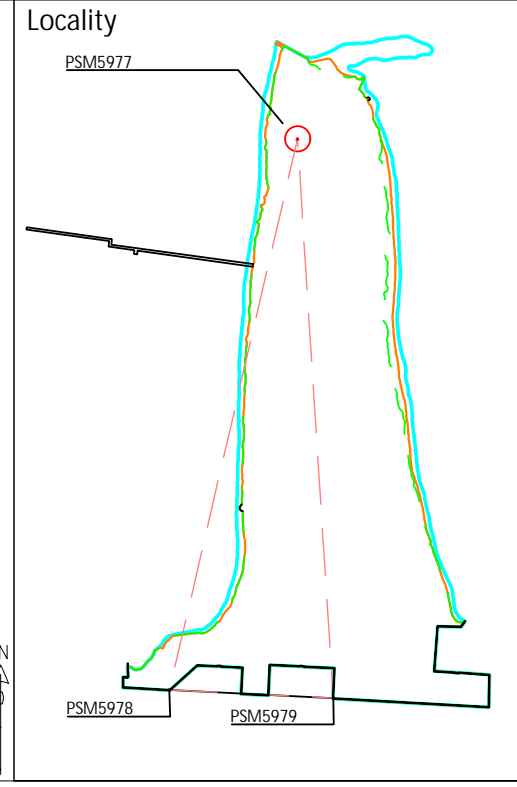
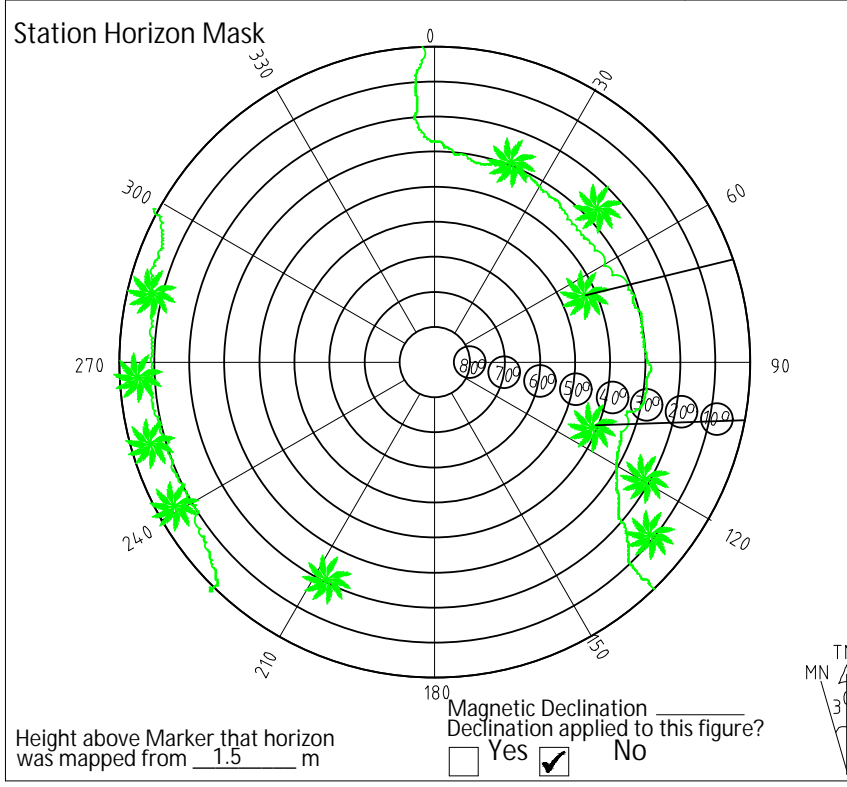
- Constructed to Type A monument specification provided by MLSA.
- Stainless steel PSM plate was secured to the concrete with four bolts.
- Horizontal coordinates were established using a GNSS static survey.
- Located 200mm above ground level.
- The reduced level of PSM 5979 was transferred to PSM 5977 based on the level difference obtained from the GNSS static survey.

General site condition & access:

- Located in an easily accessible area with a wide view of the sky.
- Situated on the northern side of the island, in front of room No. 151.

Owner: Villa Shipping and Trading Company Pvt Ltd





Sketched by: MUBEEN Scale: Not to Scale Date: 25 Aug 2024

MALDIVES LAND SURVEY AUTHORITY

MINISTRY OF HOUSING AND INFRASTRUCTURE

Office (PABX): +(960) 3004300, Fax: +(960) 3004254

Email: survey@housing.gov.mv

Web: www.surveyofmaldives.gov.mv,

Ameenee Magu, Maafannu, Male', 20392, Maldives.



CONTROLPOINT DETAILS	Station Number	PSM 5978
Coordinate Information		
Geodetic	Grid	
WGS 84	UTM Zone 43	
Lat: 3°51'15.81263"N	E:	328469.077m
Long: 73°27'18.75741"E	N:	426188.086m
Ellp Height: -92.392m	Orth Height:	+1.459m
Island Name: Bodufinolhu (LD1194)	Date:	25 August 2024

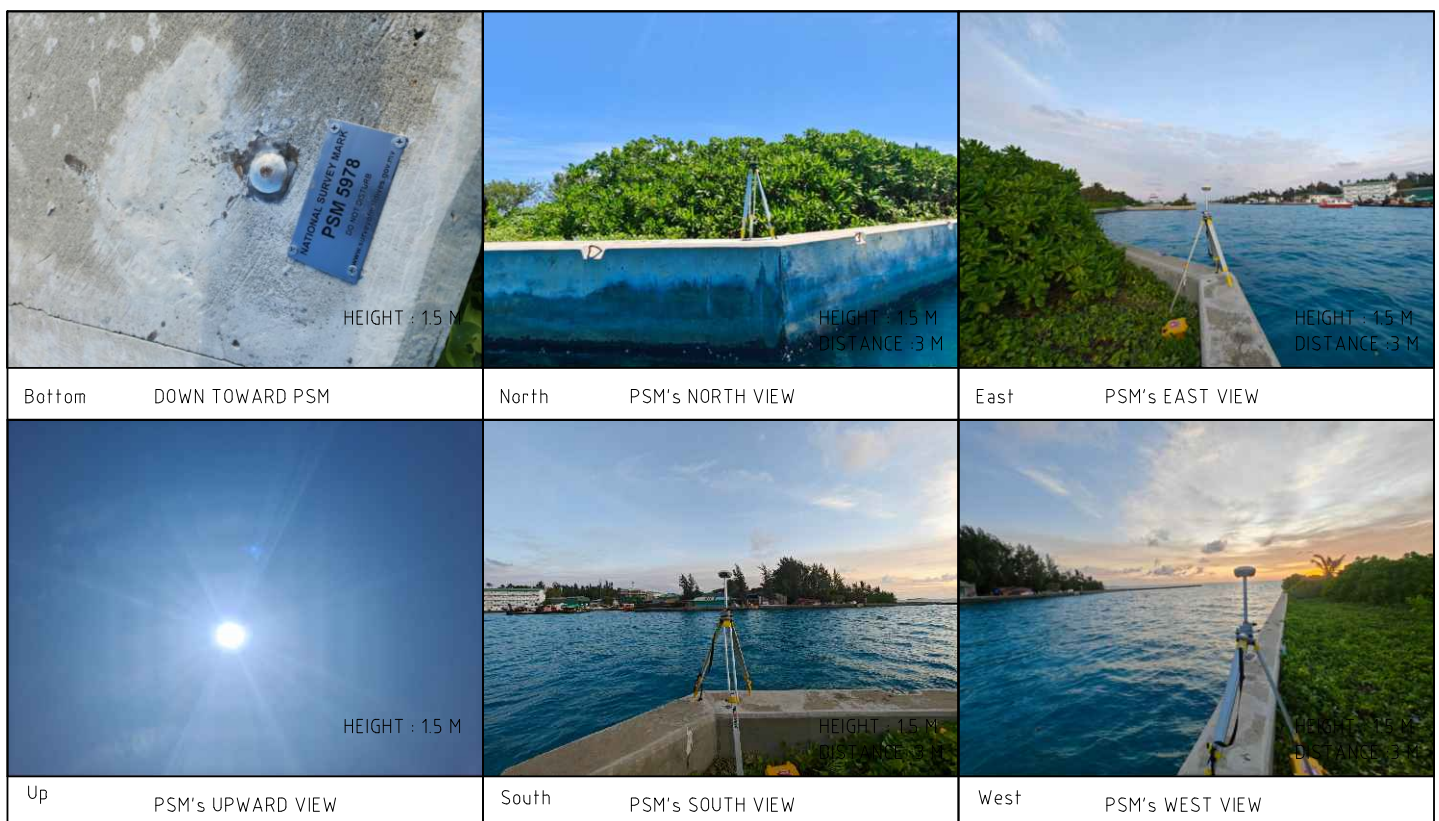
Monument description & method of survey:

- SS mushroom bolt secured to the harbor quay wall with center marked by a pin.
- Stainless steel PSM plate was secured to the concrete with four bolts.
- Horizontal coordinates were established using a GNSS static survey.
- The reduced level of PSM 5979 was transferred to PSM 5978 based on the level difference obtained from the GNSS static survey.

General site condition & access:

- Located in an easily accessible area with a wide view of the sky.
- Located on the southeastern quay wall, at the outer southwest corner of the harbor

Owner: Villa Shipping and Trading Company Pvt Ltd

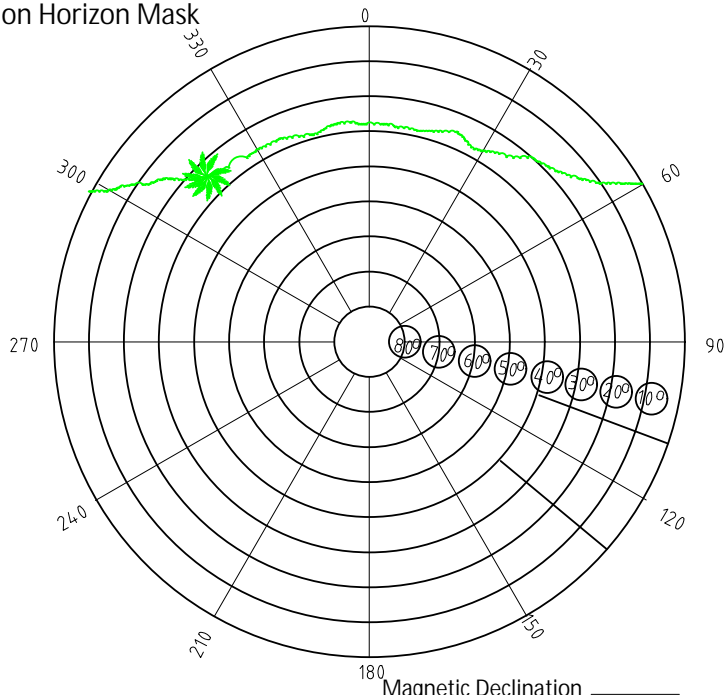


SITE INFORMATION

Station Number

P	S	M	5	9	7	8
---	---	---	---	---	---	---

Station Horizon Mask

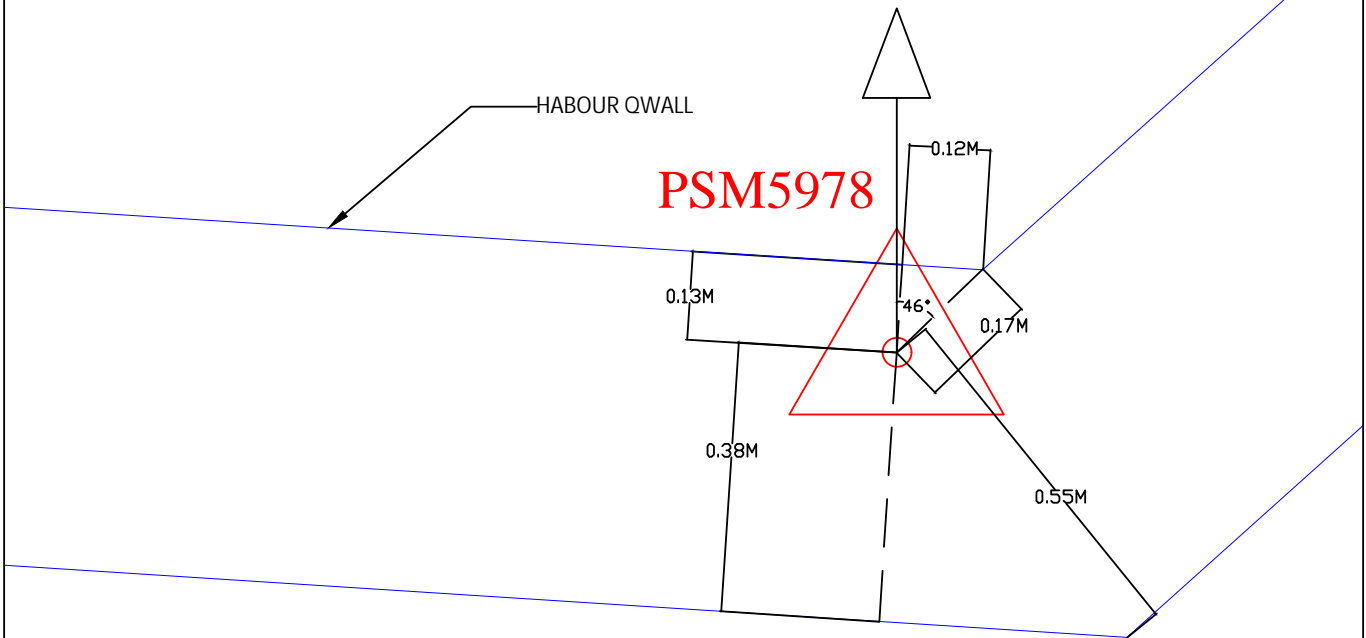
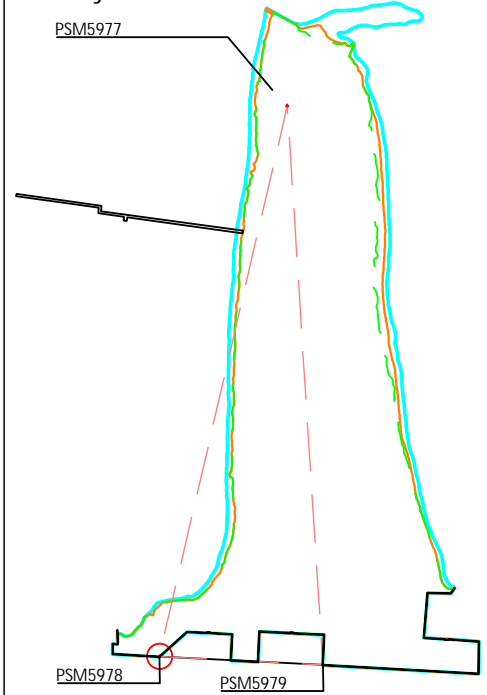


Height above Marker that horizon was mapped from 1.5 m

Magnetic Declination _____
 Declination applied to this figure?
 Yes No



Locality



Sketched by: MUBEEN

Scale: Not to Scale

Date: 25 Aug 2024

MALDIVES LAND SURVEY AUTHORITY

MINISTRY OF HOUSING AND INFRASTRUCTURE

Office (PABX): +(960) 3004300, Fax: +(960) 3004254

Email: survey@housing.gov.mv

Web: www.surveyofmaldives.gov.mv,

Ameenee Magu, Maafannu, Male', 20392, Maldives.



CONTROLPOINT DETAILS	Station Number	PSM 5979
Coordinate Information		
Geodetic	Grid	
WGS 84	UTM Zone 43	
Lat: 3°51'15.54069N	E: 328646.204m	
Long: 73°27'24.49917E	N: 426179.413m	
Ellp Height: -92.399m	Orth Height: +1.452m	
Island Name: Bodufinolhu (LD1194)	Date: 25 August 2024	

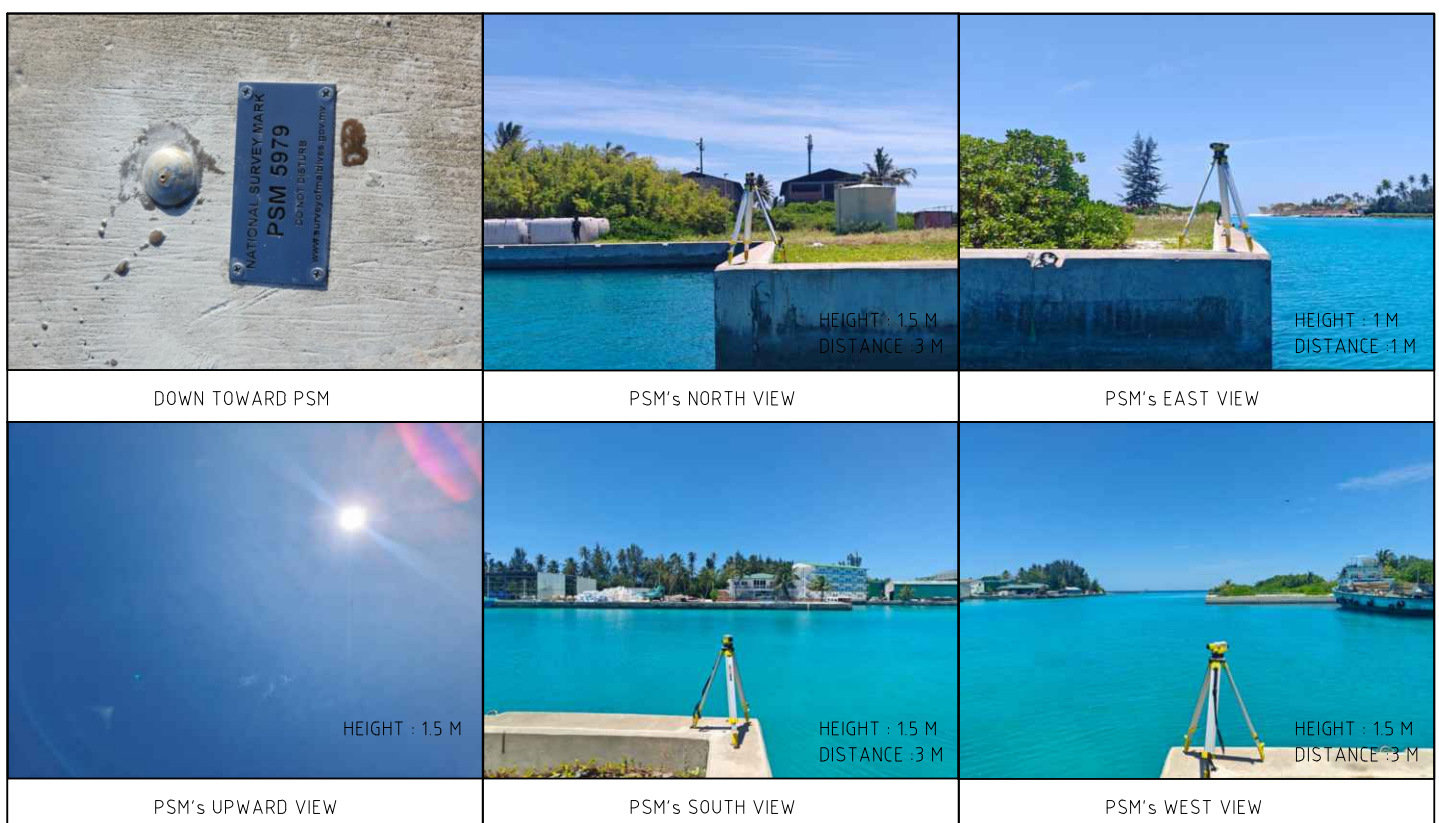
Monument description & method of survey:

- SS mushroom bolt secured to the harbor quay wall with center marked by a pin.
- Stainless steel PSM plate was secured to the concrete with four bolts.
- Horizontal coordinates were established using a GNSS static survey.
- The vertical datum (Mean Sea Level) for PSM5979 was established using Tide Tables from the Maldives Meteorological Department and water level measurements obtained through an auto level survey.

General site condition & access:

- Located in an easily accessible area with a wide view of the sky.
- Located on the southeastern quay wall, at the outer southeast corner of the harbor

Owner: Villa Shipping and Trading Company Pvt Ltd



SITE INFORMATION

Station Number

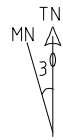
P S M 5 9 7 9

Station Horizon Mask

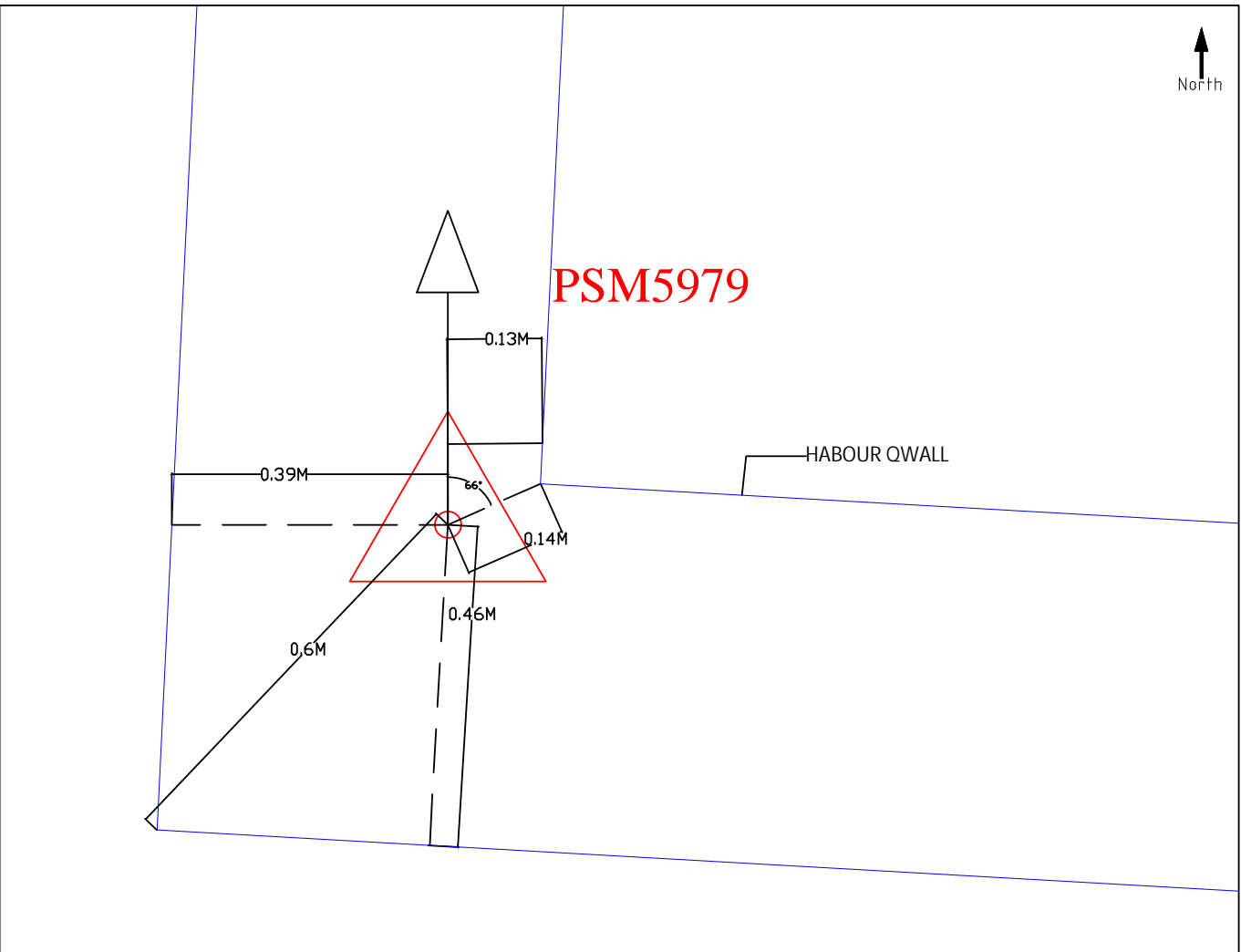
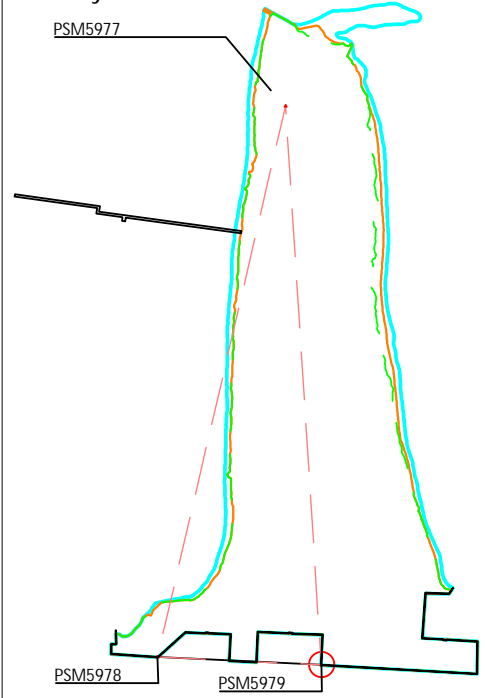


Height above Marker that horizon was mapped from 1.5 m

Magnetic Declination applied to this figure?
 Yes No



Locality



Sketched by: MUBEEN

Scale: Not to Scale

Date: 25 Aug 2024