

MALDIVES LAND AND SURVEY AUTHORITY

MINISTRY OF HOUSING AND INFRASTRUCTURE

Office (PABX): +(960) 3004300, Fax: +(960) 3004254

Ameenee Magu, Maafannu, Male', 20392, Maldives.

Email: survey@housing.gov.mv

Web: www. surveyofmaldives.gov.mv



CONTROL POINT DETAILS	Station Number PSM0034
Coordinate Information	
Geodetic	Grid
WGS 84	UTM Zone 43
Lat:	E: 273545.619m
Long:	N: 724724.925m
Ellp Height:	Orth Height: 1.330m
Island Name: HDh. Vaikaradhoo (LD0406)	Date: 2021-07-16

Monument description & method of survey:

Concrete casted in situ a diameter 0.3m pvc pipe, 1m in length, 1.5m s/s rod driven to ground as the centre with center mark punched .

Monument labelled with s/s plate stating the point ID.

- Monument type A.
- Below ground level (150mm).
- Static Survey 3D control by GNSS post processing.
- Vertical datum MSL, Vertical established by MLSA.
- PSM0034 is visible to PSM0035,

General site condition & access:

- In front of council office on Thuhkoi Hingun.
- Easily accessible.

Owner: HDh. Vaikaradhoo Council



DOWN TOWARD PSM



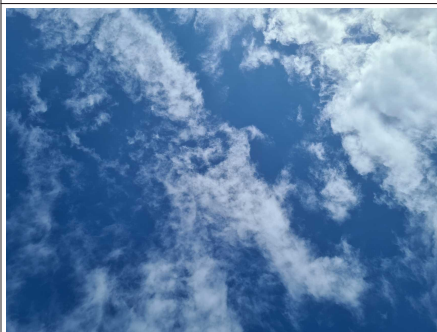
NORTH VIEW

Height 1.2m
Distance 3m



EAST VIEW

Height 1.2m
Distance 3m



FROM PSM UPTOWARD SKY

Height 1.5m



SOUTH VIEW

Height 1.2m
Distance 3m



WEST VIEW

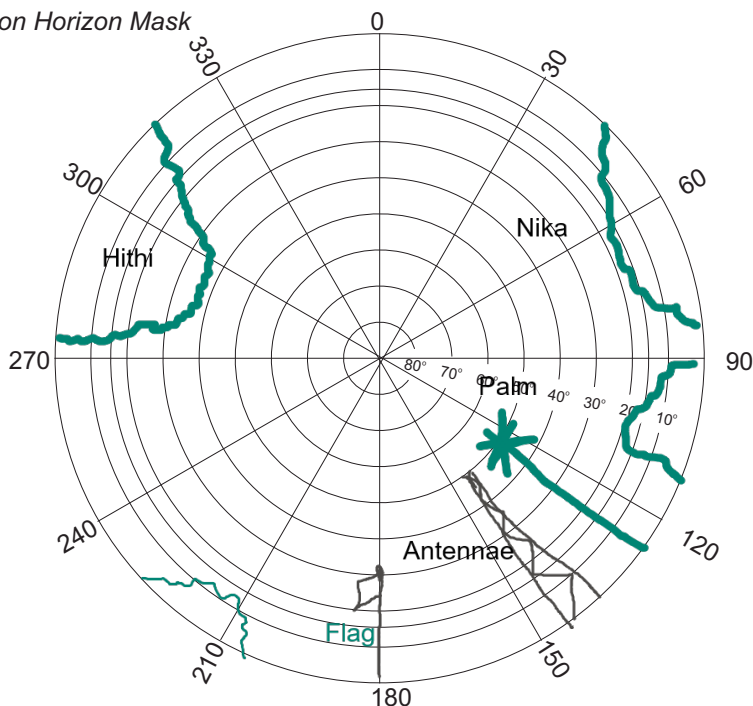
Height 1.2m
Distance 3m

SITE INFORMATION

Station Number

P	S	M	0	0	3	4
---	---	---	---	---	---	---

Station Horizon Mask



Height above Marker that horizon was mapped from 1.5 m

Magnetic Declination _____
 Declination applied to this figure?
 Yes No

Locality



Sketched by: **Hussein**

Scale: Not to scale

Date: **2021-07-16**

MALDIVES LAND AND SURVEY AUTHORITY

MINISTRY OF HOUSING AND INFRASTRUCTURE

Office (PABX): +(960) 3004300, Fax: +(960) 3004254

Ameenee Magu, Maafannu, Male', 20392, Maldives.

Email: survey@housing.gov.mv

Web: www. surveyofmaldives.gov.mv



CONTROL POINT DETAILS	Station Number PSM0035
Coordinate Information	
Geodetic	Grid
WGS 84	UTM Zone 43
Lat:	E: 273706.664m
Long:	N: 724740.260m
Ellp Height:	Orth Height: 1.529m
Island Name: HDh. Vaikaradhoo (LD0406)	Date: 2021-07-16

Monument description & method of survey:

Concrete casted in situ a diameter 0.3m pvc pipe, 1m in length, 1.5m s/s rod driven to ground as the centre with center mark punched .

Monument labelled with s/s plate stating the point ID.

- Monument type A.
- Below ground level (150mm).
- Static Survey 3D control by GNSS post processing.
- Vertical datum MSL, Vertical level transferred from PSM0034.
- PSM0035 is visible to PSM0034,

General site condition & access:

- Junction between Hilaalee Magu and Thuhkoi Hingun.
- Easily accessible.

Owner: HDh. Vaikaradhoo Council



DOWN TOWARD PSM



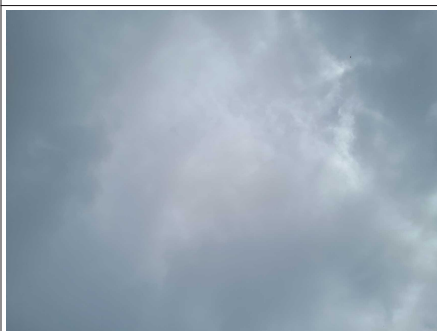
NORTH VIEW

Height 1.2m
Distance 4m



EAST VIEW

Height 1.2m
Distance 4m



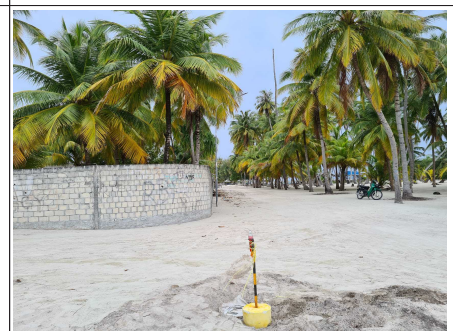
FROM PSM UPTOWARD SKY

Height 1.5m



SOUTH VIEW

Height 1.2m
Distance 4m



WEST VIEW

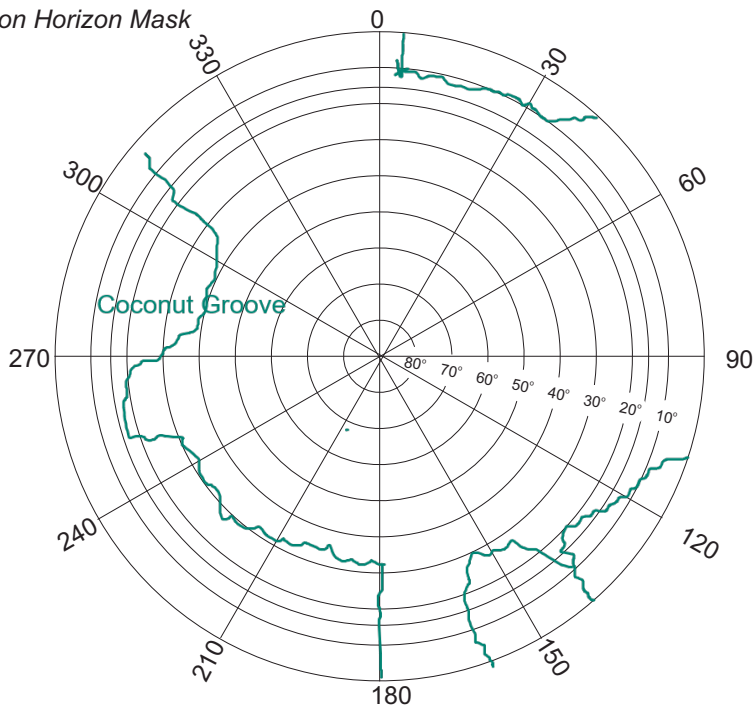
Height 1.2m
Distance 4m

SITE INFORMATION

Station Number

P	S	M	0	0	3	5
---	---	---	---	---	---	---

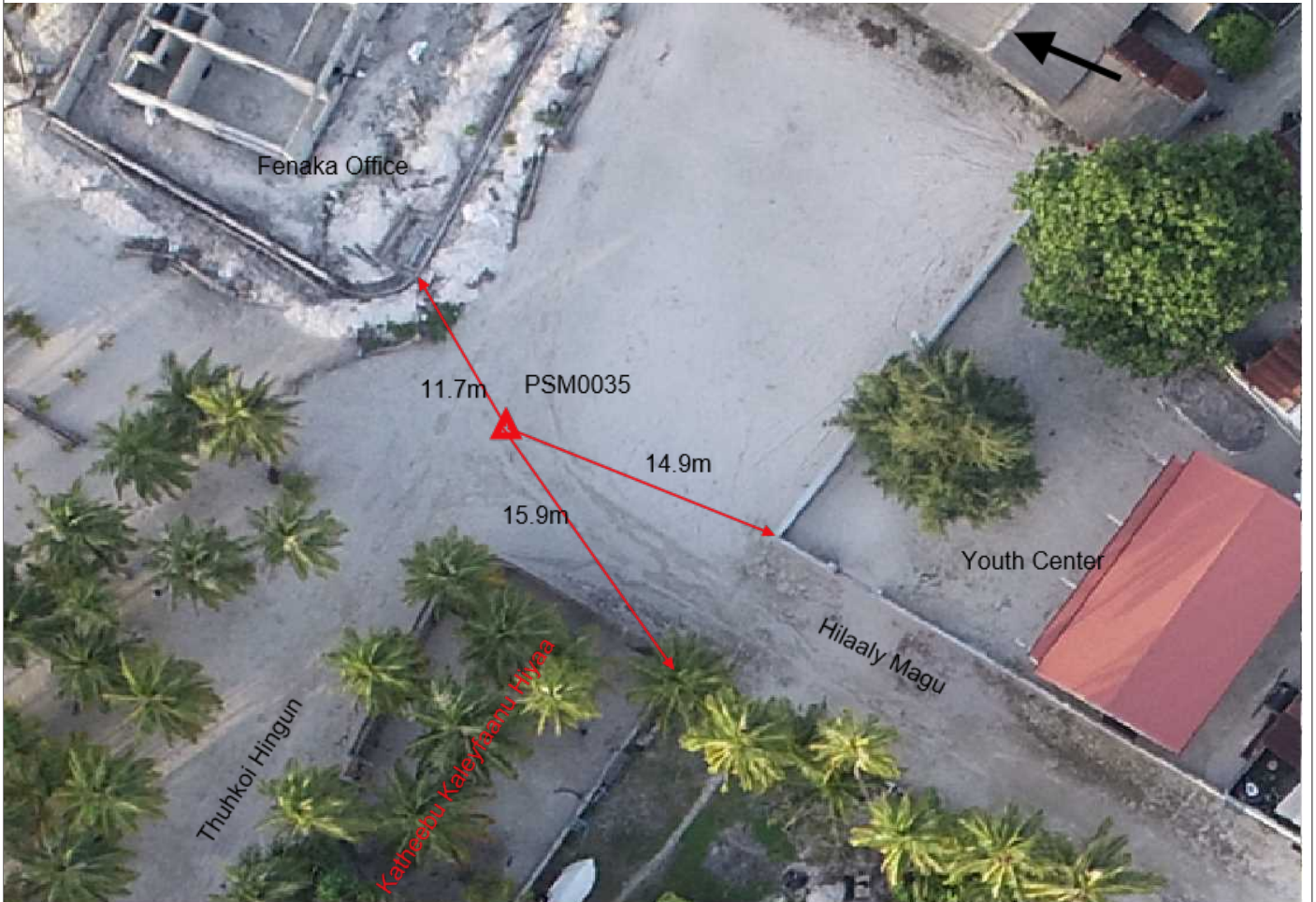
Station Horizon Mask



Height above Marker that horizon was mapped from 1.5 m

Magnetic Declination _____
 Declination applied to this figure?
 Yes No

Locality



Sketched by: **Hussein**

Scale: Not to scale

Date: **2021-07-16**

MALDIVES LAND AND SURVEY AUTHORITY

MINISTRY OF HOUSING AND INFRASTRUCTURE

Office (PABX): +(960) 3004300, Fax: +(960) 3004254

Ameenee Magu, Maafannu, Male', 20392, Maldives.

Email: survey@housing.gov.mv

Web: www. surveyofmaldives.gov.mv



CONTROL POINT DETAILS	Station Number PSM0455
Coordinate Information	
Geodetic	Grid
WGS 84	UTM Zone 43
Lat:	E: 273601.077m
Long:	N: 724379.397m
Ellp Height:	Orth Height: 1.365m
Island Name: HDh. Vaikaradhoo (LD0406)	Date: 2021-07-16

Monument description & method of survey:

Concrete casted in situ a diameter 0.3m pvc pipe, 1m in length, 1.5m s/s rod driven to ground as the centre with center mark punched .

Monument labelled with s/s plate stating the point ID.

- Monument type A.
- Below ground level (150mm).
- Static Survey 3D control by GNSS post processing.
- Vertical datum MSL, Vertical level transferred from PSM0034.

General site condition & access:

- Inside Football ground , near school,
- Easily accessible.

Owner: HDh. Vaikaradhoo Council



DOWN TOWARD PSM



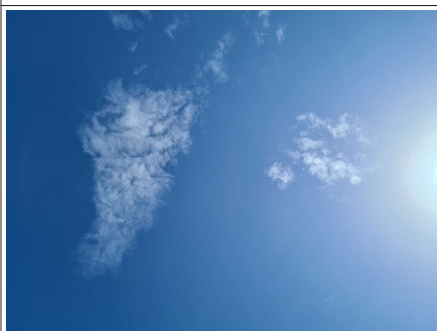
NORTH VIEW

Height 1.2m
Distance 3m



EAST VIEW

Height 1.2m
Distance 3m



FROM PSM UPTOWARD SKY

Height 1.5m



SOUTH VIEW

Height 1.2m
Distance 3m



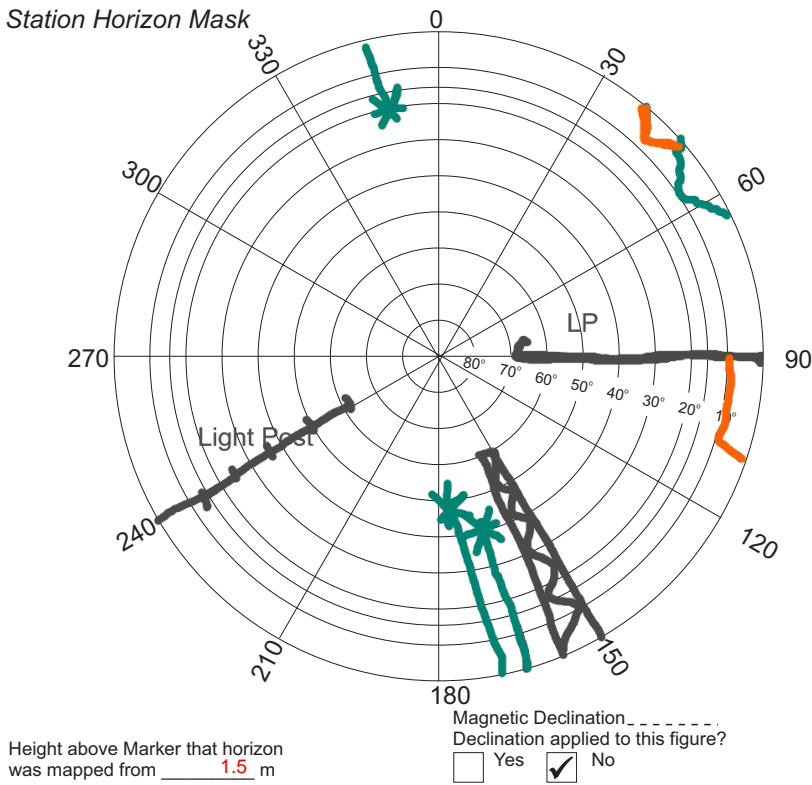
WEST VIEW

Height 1.2m
Distance 3m

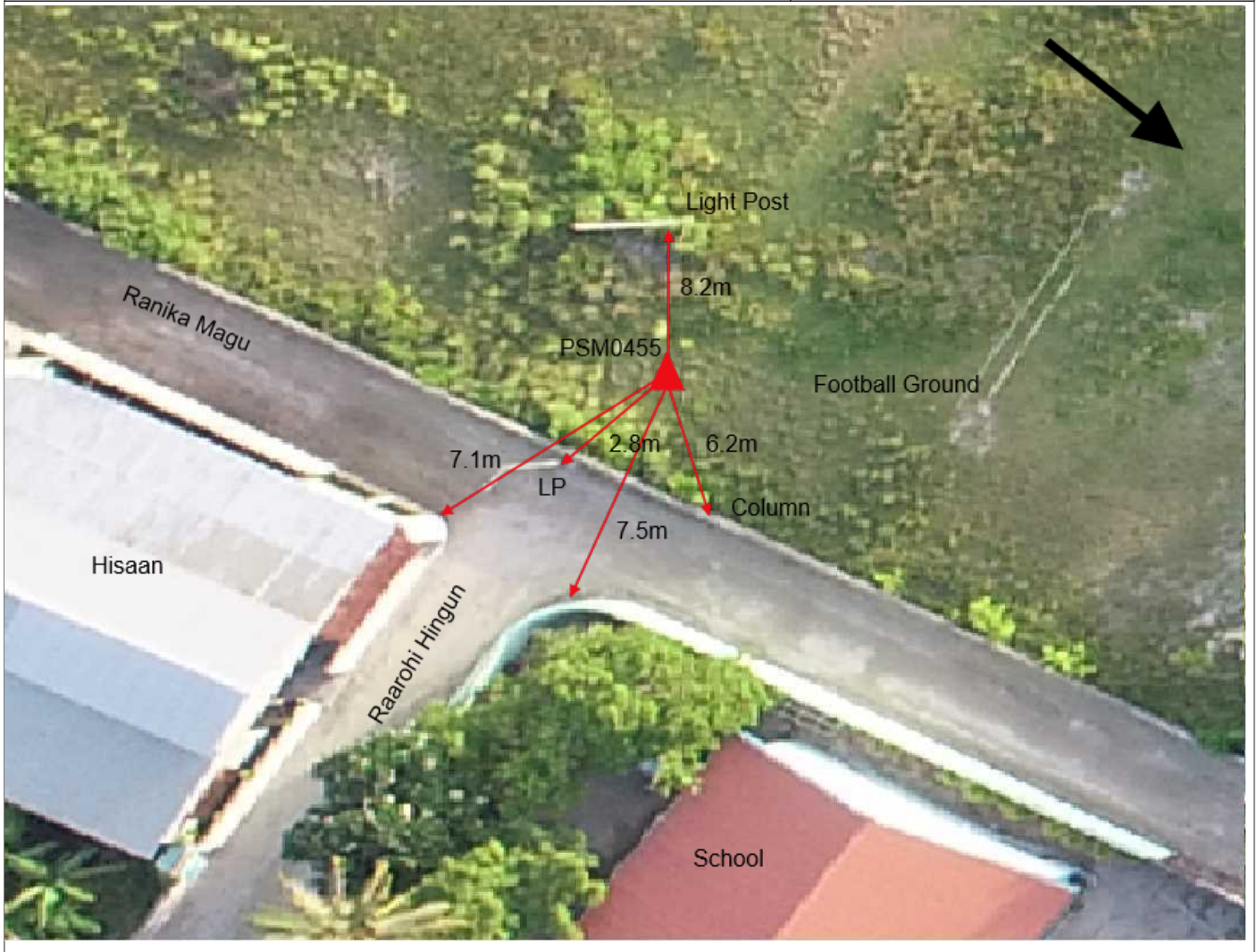
SITE INFORMATION

Station Number

P	S	M	0	4	5	5
---	---	---	---	---	---	---



Locality



Sketched by: **Hussein**

Scale: Not to scale

Date: **2021-07-16**