

# MALDIVES LAND AND SURVEY AUTHORITY

MINISTRY OF HOUSING AND INFRASTRUCTURE

Office (PABX): +(960) 3004300, Fax: +(960) 3004254

Ameenee Magu, Maafannu, Male', 20392, Maldives.

Email: survey@housing.gov.mv

Web: www. surveyofmaldives.gov.mv



<b>CONTROL POINT DETAILS</b>		<b>Station Number</b> PSM0446	
<b>Coordinate Information</b>			
<b>Geodetic</b>		<b>Grid</b>	
<b>WGS 84</b>		<b>UTM Zone 43</b>	
Lat:		E:	302139.715m
Long:		N:	753938.468m
Ellp Height:		Orth Height:	1.387m
<b>Island Name:</b> HA. Baarah (LD0987)		<b>Date:</b> 2021-07-15	

**Monument description & method of survey:**

Concrete casted in situ to a diameter 0.3m pvc pipe, 1m in length, 1.5m s/s rod driven to ground as the centre with center mark punched .

Monument labelled with s/s plate stating the point ID.

- Monument type A.
- Below ground level ( 150mm).
- Static Survey 3D control by GNSS post processing.
- Vertical datum MSL, level transferred from PSM0448
- PSM0446 is visible to PSM0447.

**General site condition & access:**

- South end of pavement to jetty, in front of Ganduvaru Magu
- Easily accessible.

**Owner:** HA. Baarah Council

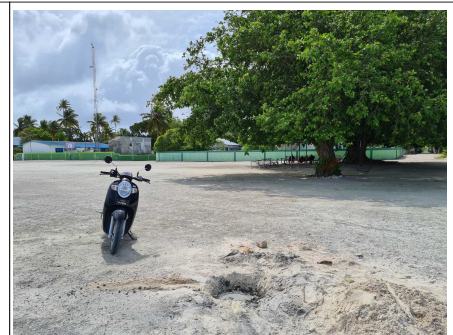


DOWN TOWARD PSM



NORTH VIEW

Height 1.2m  
Distance 3m



EAST VIEW

Height 1.2m  
Distance 3m



FROM PSM UPTOWARD SKY

Height 1.5m



SOUTH VIEW

Height 1.2m  
Distance 3m



WEST VIEW

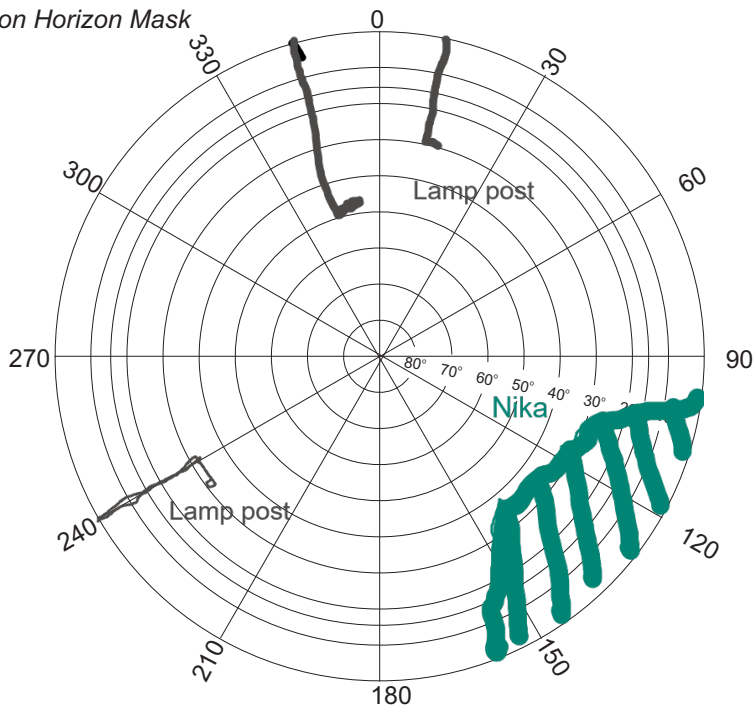
Height 1.2m  
Distance 3m

**SITE INFORMATION**

Station Number

P	S	M	0	4	4	6
---	---	---	---	---	---	---

Station Horizon Mask

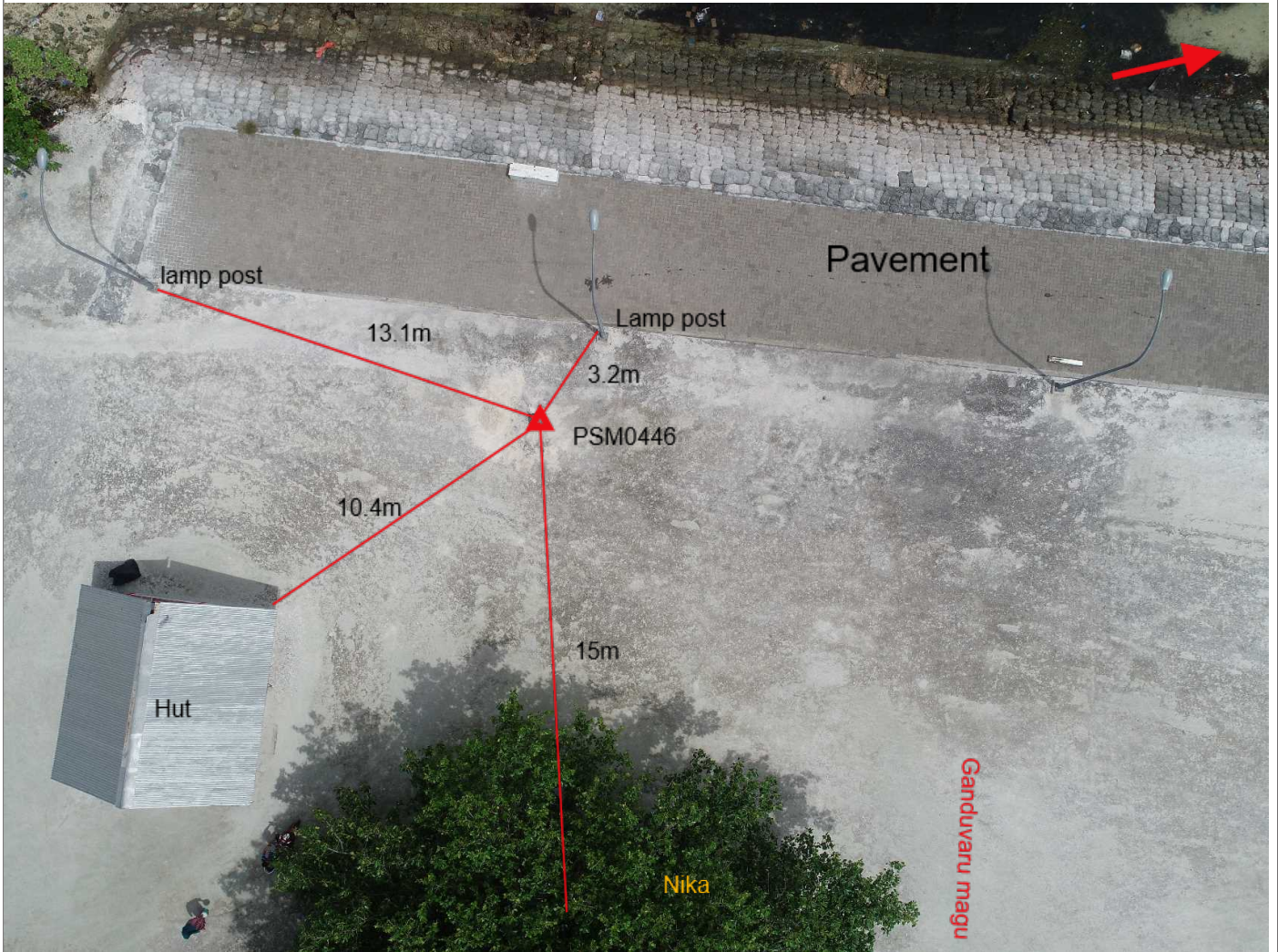
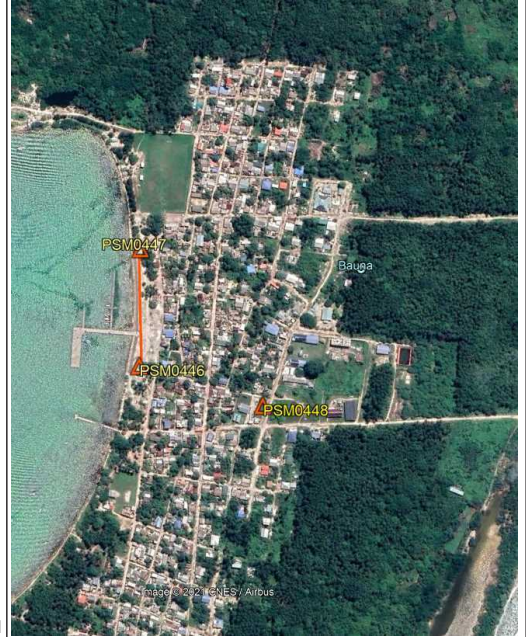


Height above Marker that horizon was mapped from 1.5 m

Magnetic Declination \_\_\_\_\_  
 Declination applied to this figure?  
 Yes  No



Locality



Sketched by: **Hussein**

Scale: Not to scale

Date: **2021-07-15**

# MALDIVES LAND AND SURVEY AUTHORITY

MINISTRY OF HOUSING AND INFRASTRUCTURE

Office (PABX): +(960) 3004300, Fax: +(960) 3004254

Ameenee Magu, Maafannu, Male', 20392, Maldives.

Email: survey@housing.gov.mv

Web: www. surveyofmaldives.gov.mv



<b>CONTROL POINT DETAILS</b>		<b>Station Number</b> PSM0447	
<b>Coordinate Information</b>			
<b>Geodetic</b>		<b>Grid</b>	
<b>WGS 84</b>		<b>UTM Zone 43</b>	
Lat:		E:	302184.531m
Long:		N:	754117.883m
Ellp Height:		Orth Height:	1.118m
<b>Island Name:</b> HA. Baarah (LD0987)		<b>Date:</b> 2021-07-15	

**Monument description & method of survey:**

Concrete casted in situ to a diameter 0.3m pvc pipe, 1m in length, 1.5m s/s rod driven to ground as the centre with center mark punched .

Monument labelled with s/s plate stating the point ID.

- Monument type A.
- Below ground level ( 150mm).
- Static Survey 3D control by GNSS post processing.
- Vertical datum MSL, level transferred from PSM0448
- PSM0447 is visible to PSM0446.

**General site condition & access:**

- North end of pavement to jetty, near glass hut.
- Easily accessible.

**Owner:** HA. Baarah Council



DOWN TOWARD PSM



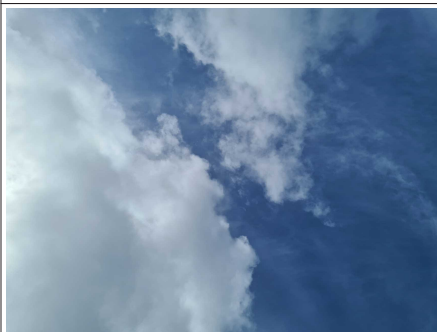
NORTH VIEW

Height 1.2m  
Distance 3m



EAST VIEW

Height 1.2m  
Distance 3m



FROM PSM UPTOWARD SKY

Height 1.5m



SOUTH VIEW

Height 1.2m  
Distance 3m



WEST VIEW

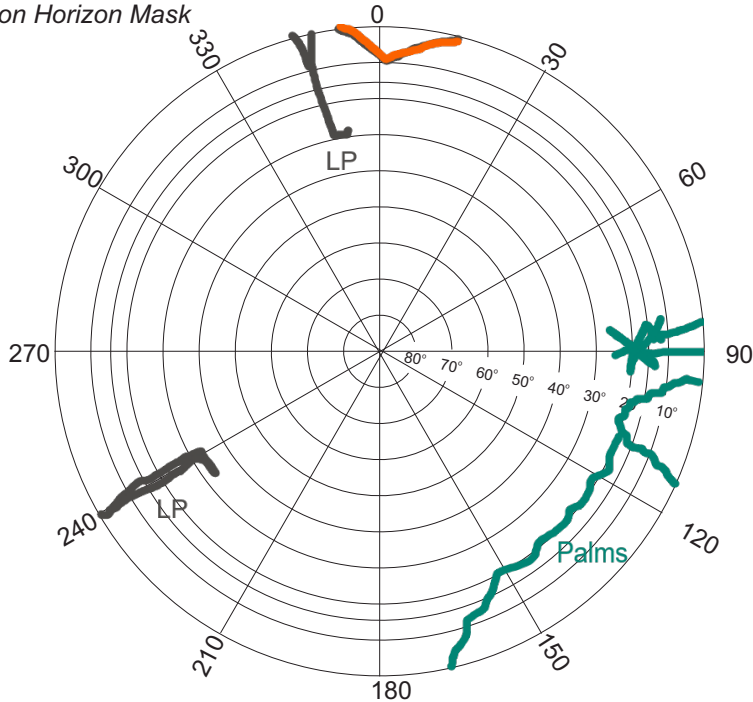
Height 1.2m  
Distance 3m

**SITE INFORMATION**

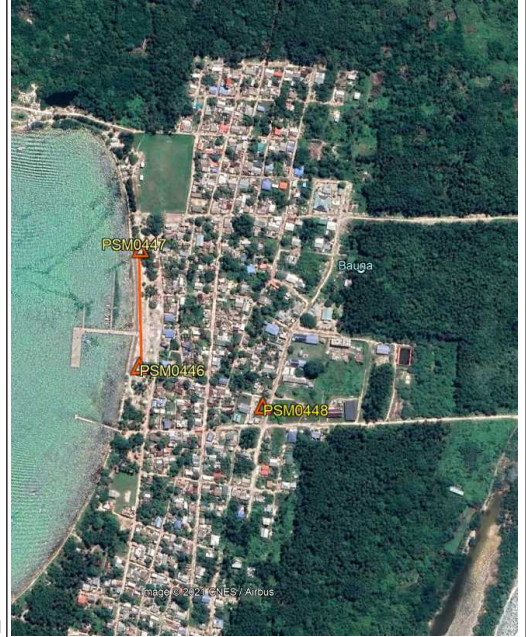
Station Number

P	S	M	0	4	4	7
---	---	---	---	---	---	---

Station Horizon Mask



Locality



Height above Marker that horizon was mapped from 1.5 m

Magnetic Declination \_\_\_\_\_  
 Declination applied to this figure?  
 Yes  No



Sketched by: **Hussein**

Scale: Not to scale

Date: **2021-07-15**

# MALDIVES LAND AND SURVEY AUTHORITY

MINISTRY OF HOUSING AND INFRASTRUCTURE

Office (PABX): +(960) 3004300, Fax: +(960) 3004254

Ameenee Magu, Maafannu, Male', 20392, Maldives.

Email: survey@housing.gov.mv

Web: www. surveyofmaldives.gov.mv



<b>CONTROL POINT DETAILS</b>	<b>Station Number</b> PSM0448
<b>Coordinate Information</b>	
<b>Geodetic</b>	<b>Grid</b>
<b>WGS 84</b>	<b>UTM Zone 43</b>
Lat:	E: 302347.047m
Long:	N: 753837.258m
Ellp Height:	Orth Height: 1.612m
<b>Island Name:</b> HA. Baarah (LD0987)	<b>Date:</b> 2021-07-15

**Monument description & method of survey:**

- Concrete casted in situ a diameter 0.3m pvc pipe, 1m in length, 1.5m s/s rod driven to ground as the centre with center mark punched .
- Monument labelled with s/s plate stating the point ID.
- Monument type A.
- Above ground level ( 100mm).
- Static Survey 3D control by GNSS post processing.
- Vertical datum MSL, corrected to predicted tide table level transferred from Water level.

**General site condition & access:**

- Inside Masjid-Al-Salah
- Towards North East corner.
- Easily accessible.

**Owner:** HA. Baarah Council



DOWN TOWARD PSM



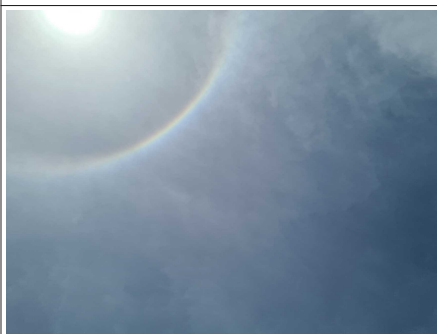
NORTH VIEW

Height 1.2m  
Distance 3m



EAST VIEW

Height 1.2m  
Distance 3m



FROM PSM UPTOWARD SKY

Height 1.5m



SOUTH VIEW

Height 1.2m  
Distance 3m



WEST VIEW

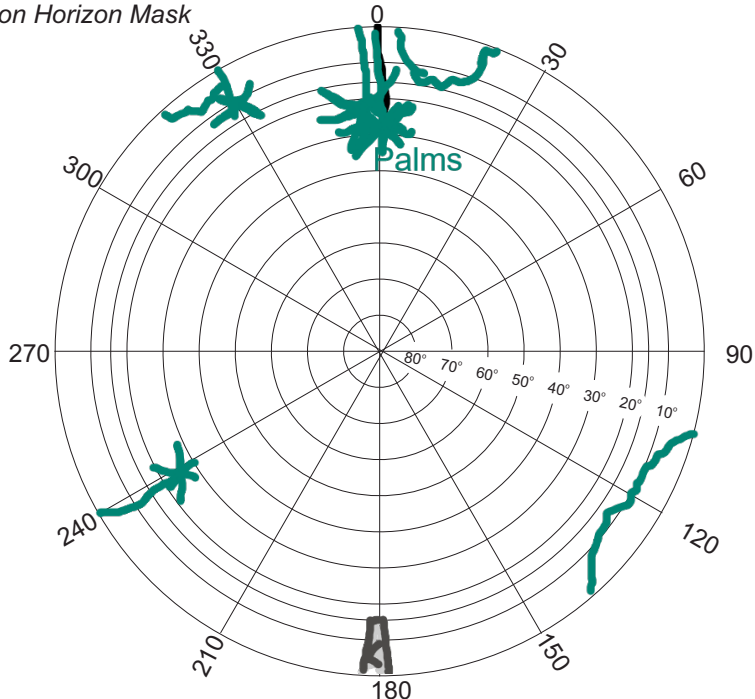
Height 1.2m  
Distance 3m

**SITE INFORMATION**

Station Number

P	S	M	0	4	4	8
---	---	---	---	---	---	---

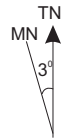
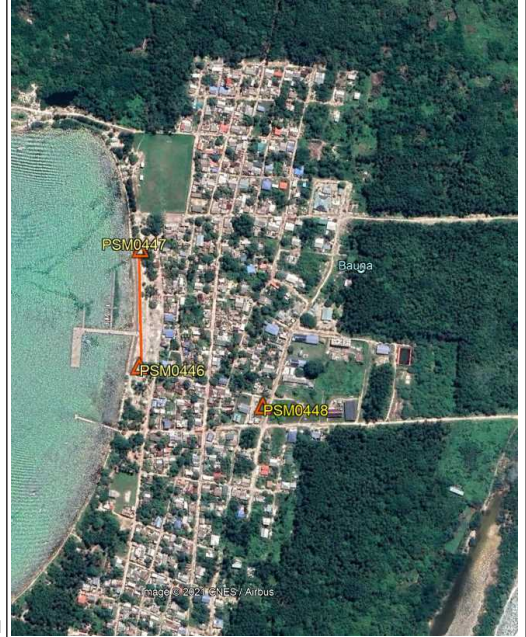
Station Horizon Mask



Height above Marker that horizon was mapped from 1.5 m

Magnetic Declination \_\_\_\_\_  
 Declination applied to this figure?  
 Yes  No

Locality



Sketched by: **Hussein**

Scale: Not to scale

Date: **2021-07-16**