

**MALDIVES LAND AND SURVEY AUTHORITY****MINISTRY OF HOUSING AND INFRASTRUCTURE**

Office (PABX): +(960) 3004300, Fax: +(960) 3004254

Email: survey@housing.gov.mv

Web: www.surveyofmaldives.gov.mv

Ameenee Magu, Maafannu, Male', 20392, Maldives



CONTROL POINT DETAILS	Station Number: PSM 0362
Coordinate Information	
Geodetic	Grid
WGS 84	UTMSouth-Zone_43 : 72E to 78E
Lat: 0°17'14.64"N	E: 327812.710m
Long: 73°27'09.96"E	N: 31777.937m
Ellp Height: -91.441m	Orth Height: +1.652m from MSL

Island Name: GDH. Gadhdhoo	Date: 27th July 2020
----------------------------	----------------------

**Monument description & method of survey:**

- Concrete casted in situ to a diameter 0.2m-0.3m pvc pipe, 1m in length, 1.5m s/s driven to ground as centre with cross mark. Monument labelled with s/s plate stating the point ID. Fixed to a type A monument (with a 12" PVC pipe)
- Above 70mm from ground level.
- GNSS Static Survey was done by using 2 Topcon GR-5 differential GPS.
- The vertical coordinate (Z) of the PSM (PSM0363) was computed by using the difference in heights derived from GNSS static survey.

**General site condition & access:**

PSM 0362 is established on the western side of Gadhdhoo island, near the established revetment and around 19 meters inside the high tide line

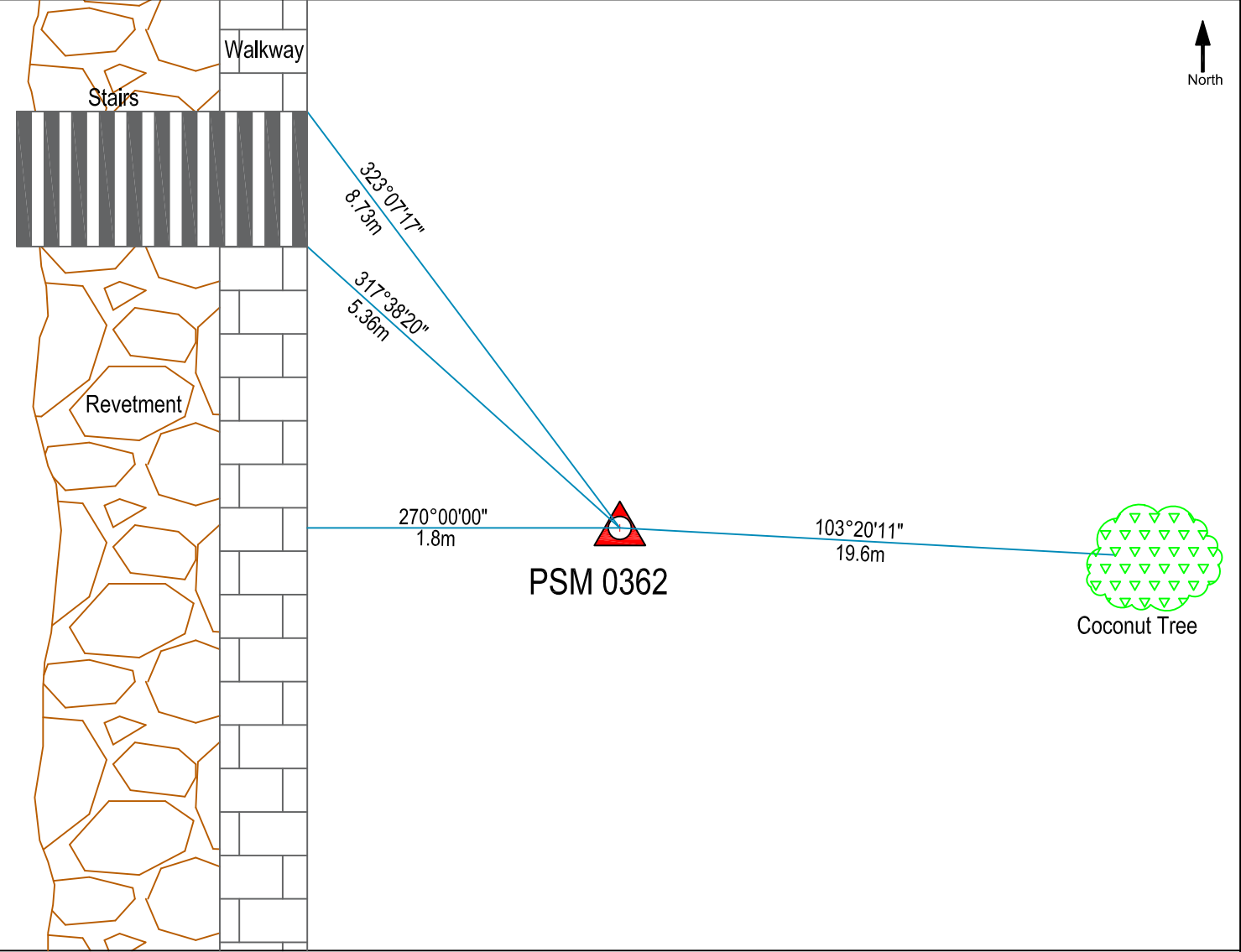
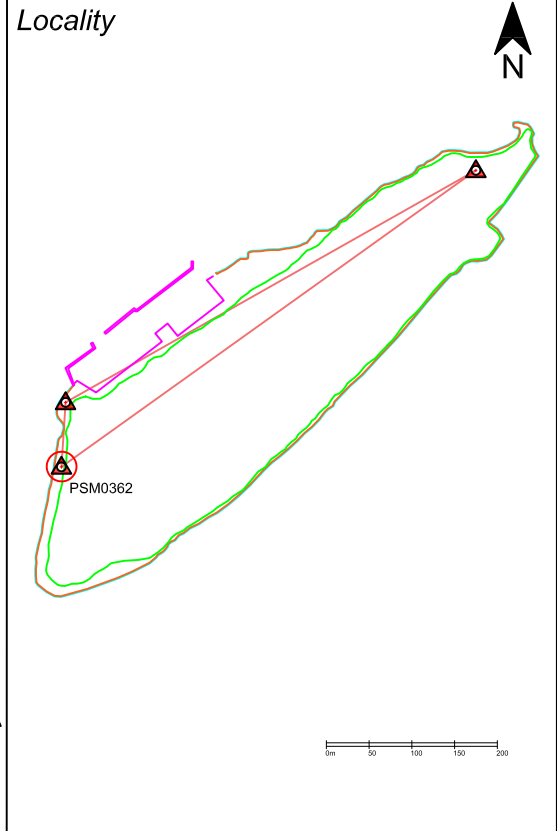
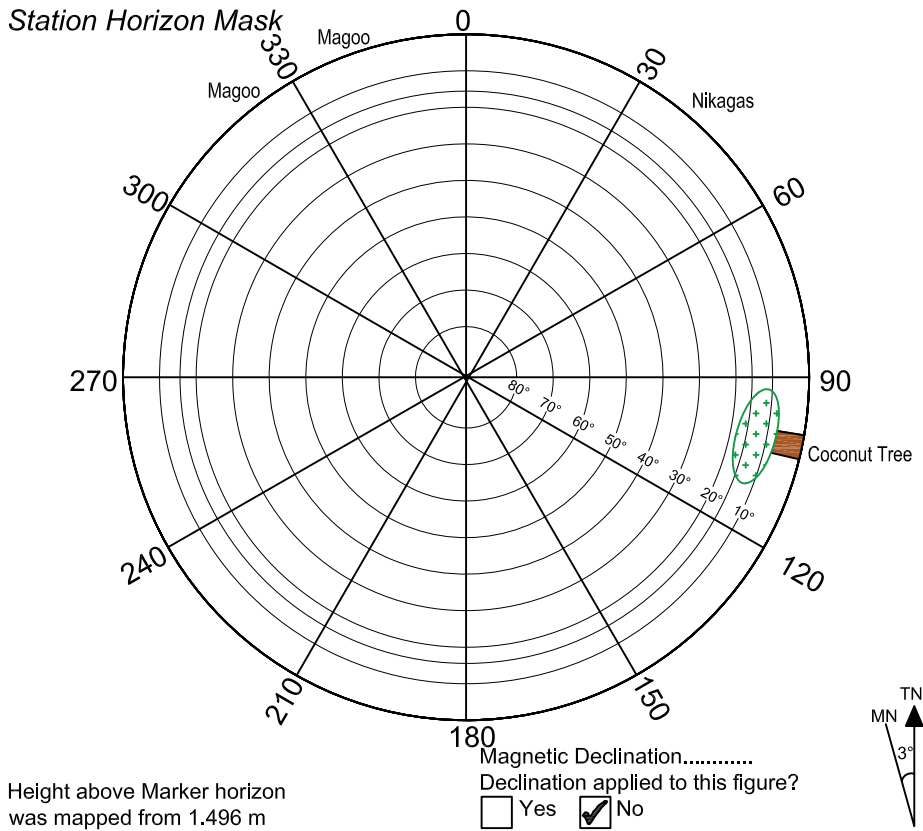
Owner:

North	Sky view from PSM	West
<p>Height: 1.6m Distance: 1.6m</p>	<p>Height: 1.6m</p>	<p>Height: 1.6m Distance: 1.3m</p>
South	Top of PSM	East
<p>Height: 1.6m Distance: 1.3m</p>		<p>Height: 1.6m Distance: 1.1m</p>

**SITE INFORMATION**

Station Number

P	S	M	0	3	6	2
---	---	---	---	---	---	---



Sketched by: Mohamed Shifaf

Scale: Not to scale

Date: 27th July 2020

**MALDIVES LAND AND SURVEY AUTHORITY****MINISTRY OF HOUSING AND INFRASTRUCTURE**

Office (PABX): +(960) 3004300, Fax: +(960) 3004254

Email: survey@housing.gov.mv

Web: www.surveyofmaldives.gov.mv

Ameenee Magu, Maafannu, Male', 20392, Maldives



CONTROL POINT DETAILS	Station Number: PSM 0363
Coordinate Information	
Geodetic	Grid
WGS 84	UTMSouth-Zone_43 : 72E to 78E
Lat: 0°17'20.30"N	E: 327823.764m
Long: 73°27'10.32"E	N: 31951.972m
Ellp Height: -91.255m	Orth Height: +1.838m from MSL

Island Name: GDH. Gadhdhoo	Date: 27th July 2020
----------------------------	----------------------

**Monument description & method of survey:**

- Concrete casted in situ to a diameter 0.2m-0.3m pvc pipe, 1m in length, 1.5m s/s driven to ground as centre with cross mark. Monument labelled with s/s plate stating the point ID. Fixed to a type A monument (with a 12" PVC pipe)
- Above 80mm from ground level.
- GNSS Static Survey was done by using 2 Topcon GR-5 differential GPS.
- Vertical datum (MSL) derived from Water level measured at Gadhdhoo referred to PSM0363 using S. Gan predicted tide.

**General site condition & access:**

PSM 0363 was established on the north western side of Gadhdhoo island, from the islands main harbor. PSM 0363 is established on the high ground where the ground is stable and compact.

Owner:

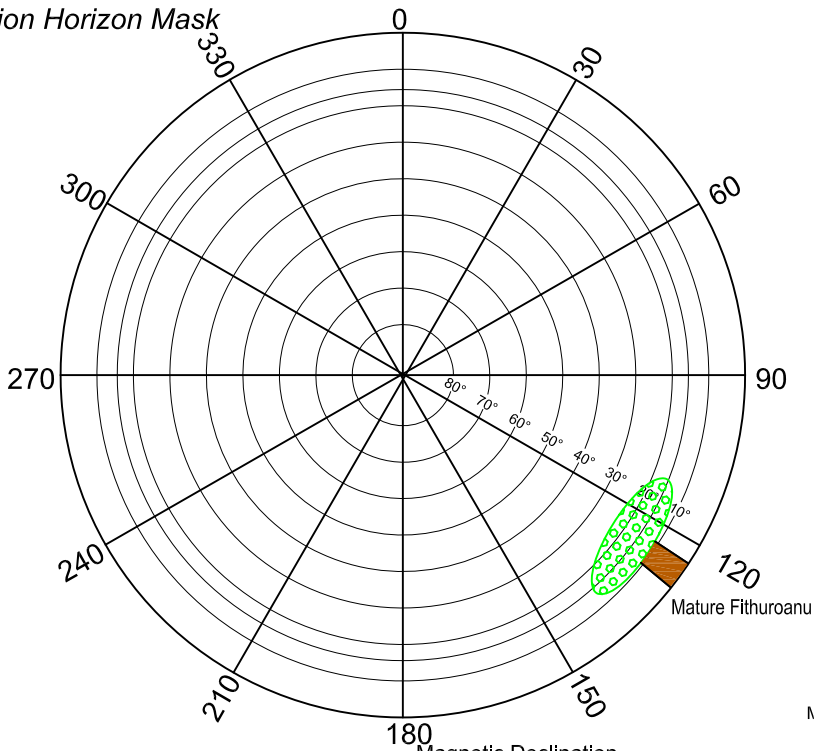
North	Sky view from PSM	West
 Height: 1.6m Distance: 1.3m	 Height: 1.6m	 Height: 1.6m Distance: 2.5m
South	Top of PSM	East
 Height: 1.6m Distance: 1.6m	 PSM 0364	 Height: 1.6m Distance: 2.0m

**SITE INFORMATION**

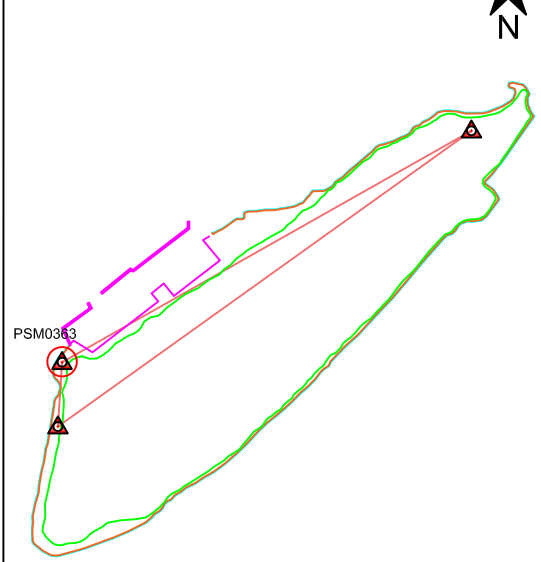
Station Number

P	S	M	0	3	6	3
---	---	---	---	---	---	---

Station Horizon Mask

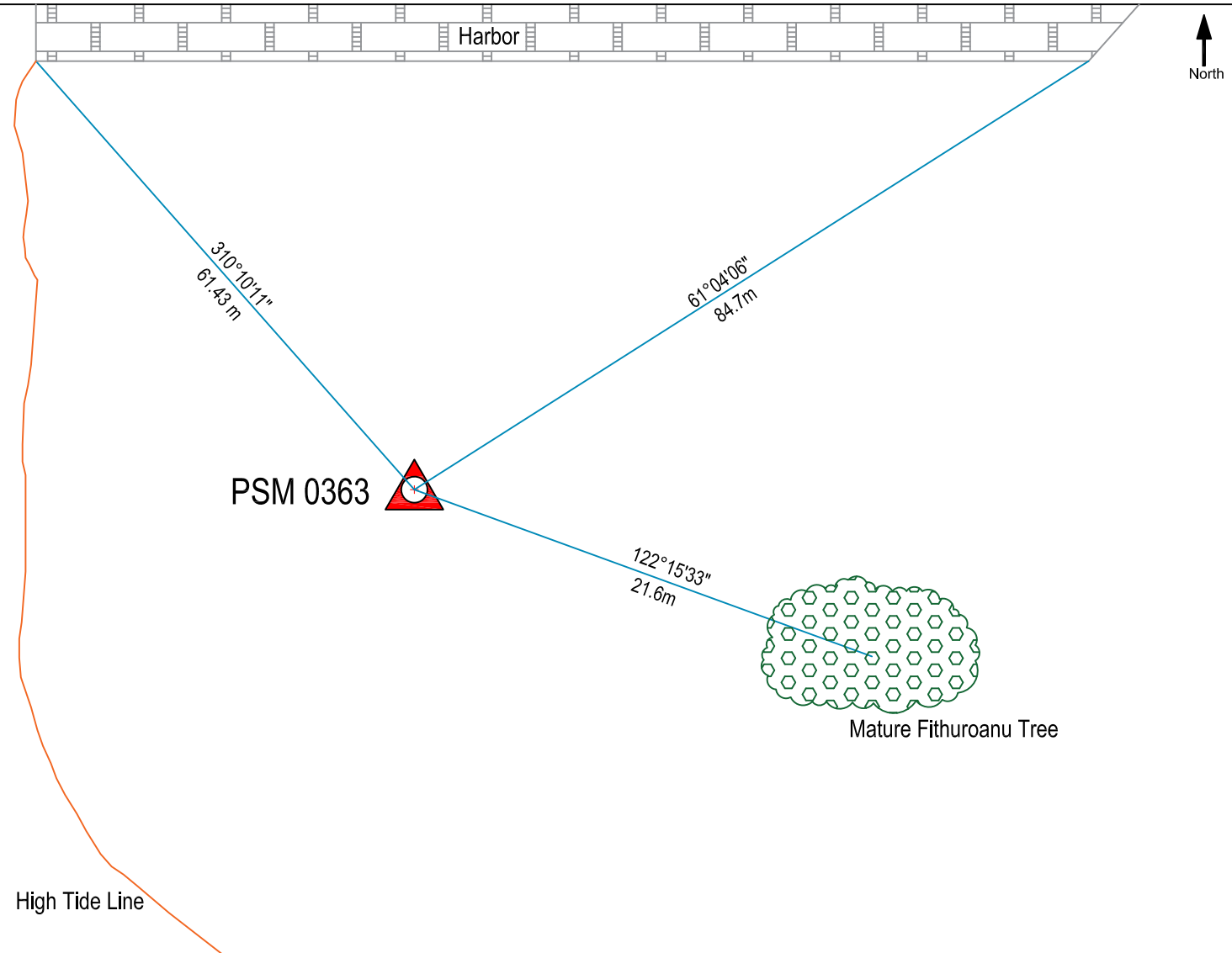
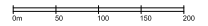


Locality



Height above Marker horizon was mapped from 1.510m

Magnetic Declination.....  
Declination applied to this figure?  
 Yes  No



Sketched by: Mohamed Shifaf

Scale: Not to scale

Date: 27th July 2020

**MALDIVES LAND AND SURVEY AUTHORITY****MINISTRY OF HOUSING AND INFRASTRUCTURE**

Office (PABX): +(960) 3004300, Fax: +(960) 3004254

Email: survey@housing.gov.mv

Web: www.surveyofmaldives.gov.mv

Ameenee Magu, Maafannu, Male', 20392, Maldives



CONTROL POINT DETAILS	Station Number: PSM 0364
Coordinate Information	
Geodetic	Grid
WGS 84	UTMSouth-Zone_43 : 72E to 78E
Lat: 0°17'40.67"N	E: 328929.848m
Long: 73°27'46.08"E	N: 32577.450m
Ellp Height: -91.688m	Orth Height: +1.405m from MSL

Island Name: GDH. Gadhdhoo	Date: 27th July 2020
----------------------------	----------------------

**Monument description & method of survey:**

- Concrete casted in situ to a diameter 0.2m-0.3m pvc pipe, 1m in length, 1.5m s/s driven to ground as centre with cross mark. Monument labelled with s/s plate stating the point ID. Fixed to a type A monument (with a 12" PVC pipe)
- Above 85mm from ground level.
- GNSS Static Survey was done by using 2 Topcon GR-5 differential GPS.
- The vertical coordinate (Z) of the PSM (PSM0362) was computed by using the difference in heights derived from GNSS static survey.

**General site condition & access:**

PSM 0364 is established on the north eastern side of Gadhdhoo island, around 48 meters inside the high tide line. It is located near the islands RO-Plant facility. PSM 0364 is established on the high ground where the ground is stable and compact.

Owner:

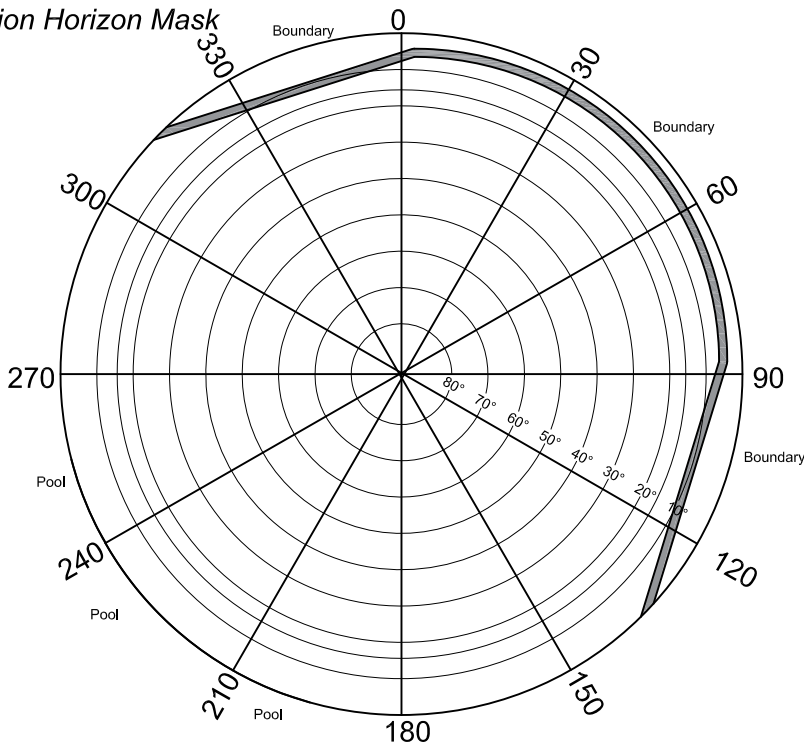
North	Sky view from PSM	West
<p>Height: 1.6m Distance: 1.3m</p>	<p>Height: 1.6m</p>	<p>Height: 1.6m Distance: 1.4m</p>
South	Top of PSM	East
<p>Height: 1.6m Distance: 1.3m</p>		<p>Height: 1.6m Distance: 1.9m</p>

**SITE INFORMATION**

Station Number

P	S	M	0	3	6	4
---	---	---	---	---	---	---

**Station Horizon Mask**

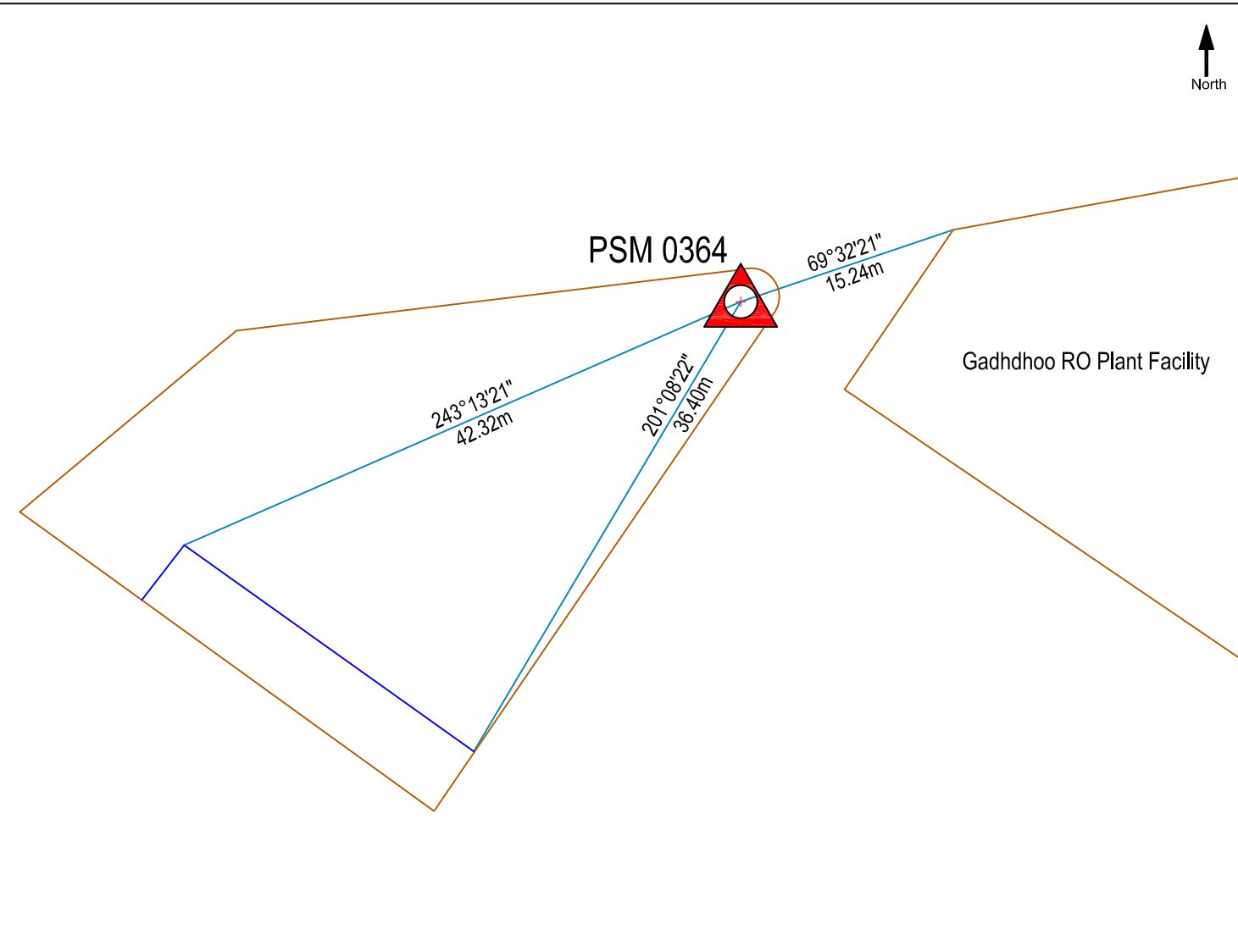
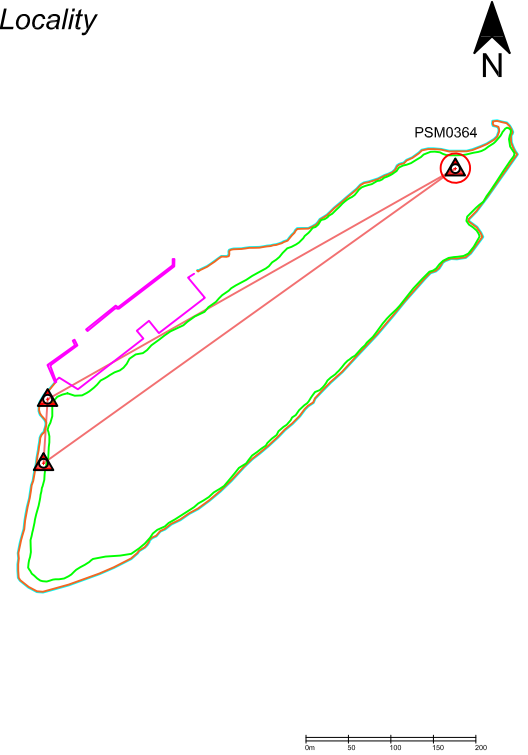


Height above Marker horizon was mapped from 1.510m

Magnetic Declination.....  
 Declination applied to this figure?  
 Yes  No



**Locality**



Sketched by: Mohamed Shifaf

Scale: Not to scale

Date: 27th July 2020