

# MALDIVES LAND SURVEY AUTHORITY

MINISTRY OF HOUSING AND INFRASTRUCTURE

Office (PABX): +(960) 3004300, Fax: +(960) 3004254

Email: survey@housing.gov.mv

Web: www.surveyofmaldives.gov.mv,

Ameenee Magu, Maafannu, Male', 20392, Maldives.



CONTROLPOINT DETAILS	Station Number	PSM 0102
Coordinate Information		
Geodetic	Grid	
WGS 84	UTM Zone 43	
Lat: 00°50'18.75734"N	E:	298092.999m
Long: 73°11'08.24978"E	N:	92731.139m
Ellp Height:	Orth Height:	+1.030m
Island Name: Ga.Kolamaafushi	Date:	10 OCT 2020

## Monument description & method of survey:

-Established to Type A monument standard. -Stainless steel plate fixed to concrete by Four bolts - Horizontal coordinates fixed by GNSS Static survey.

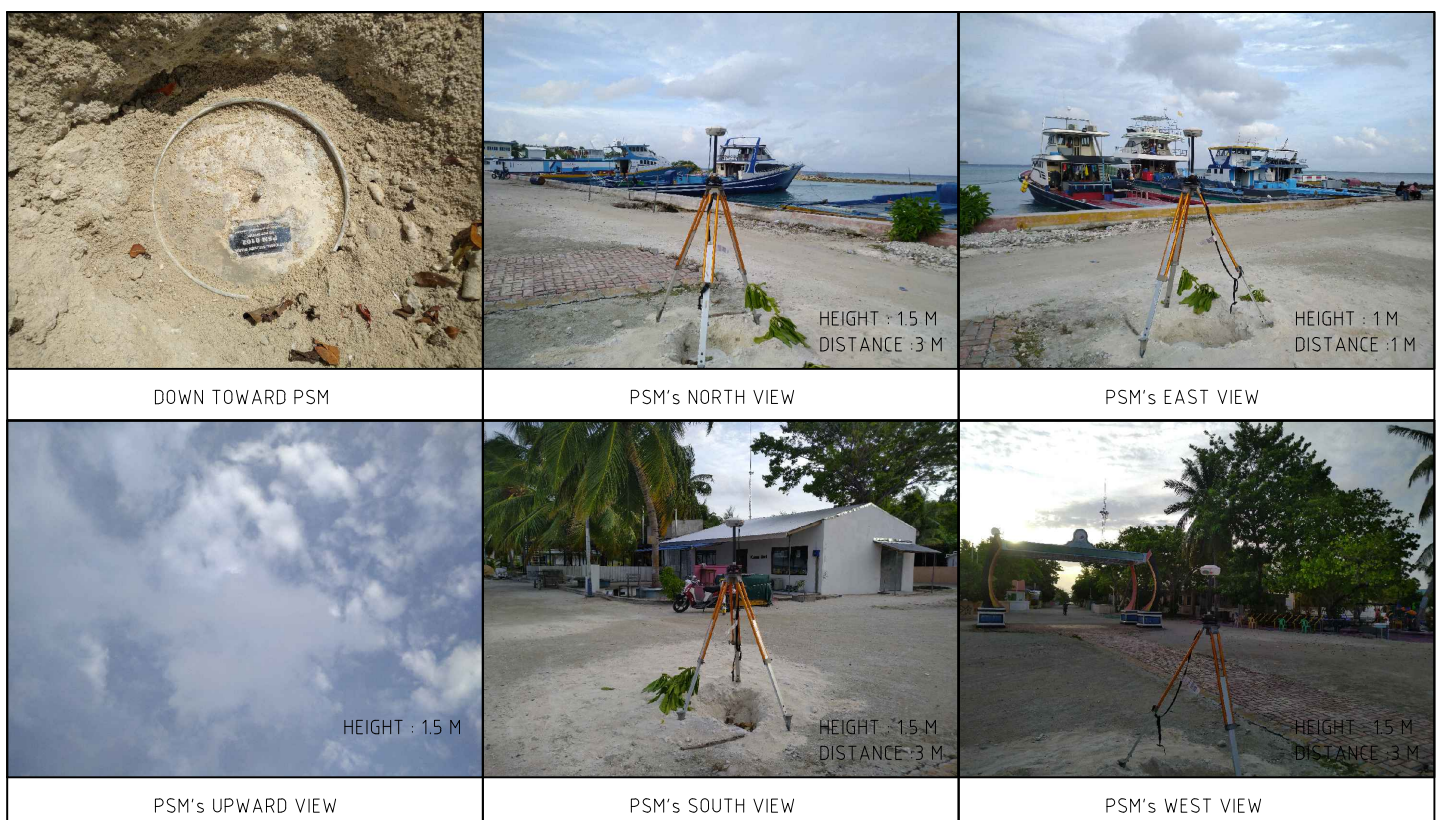
-Below 200mm

-Elevation reduced relative to Local MSL by reference to tide prediction data MET (Gan)

## General site condition & access:

- Easily accessible area with wide angle of sky visibility
- Located near the harbour area. inter section of rah'dhebai Magu and Bandharu magu

**Owner:** Ga.Kolamafushi Council- GOVT of Maldives

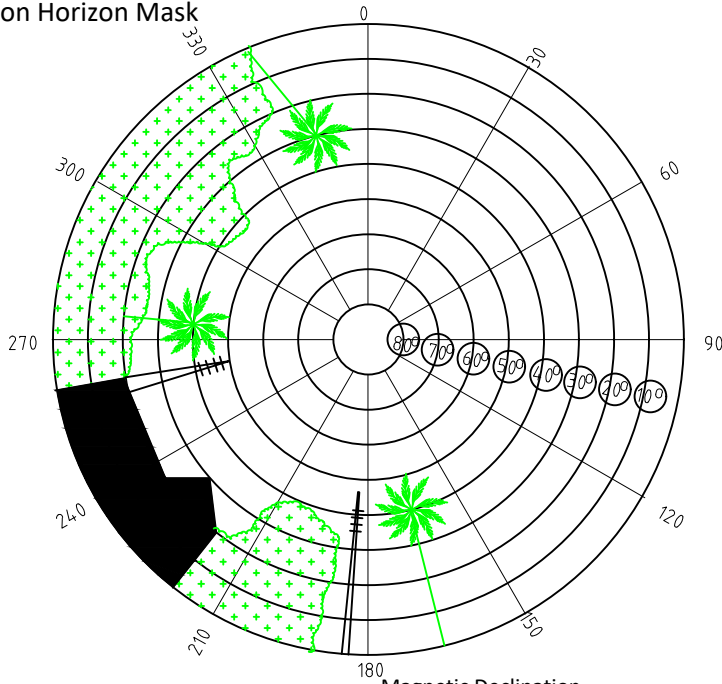


SITE INFORMATION

Station Number

P	S	M	0	1	0	2
---	---	---	---	---	---	---

Station Horizon Mask

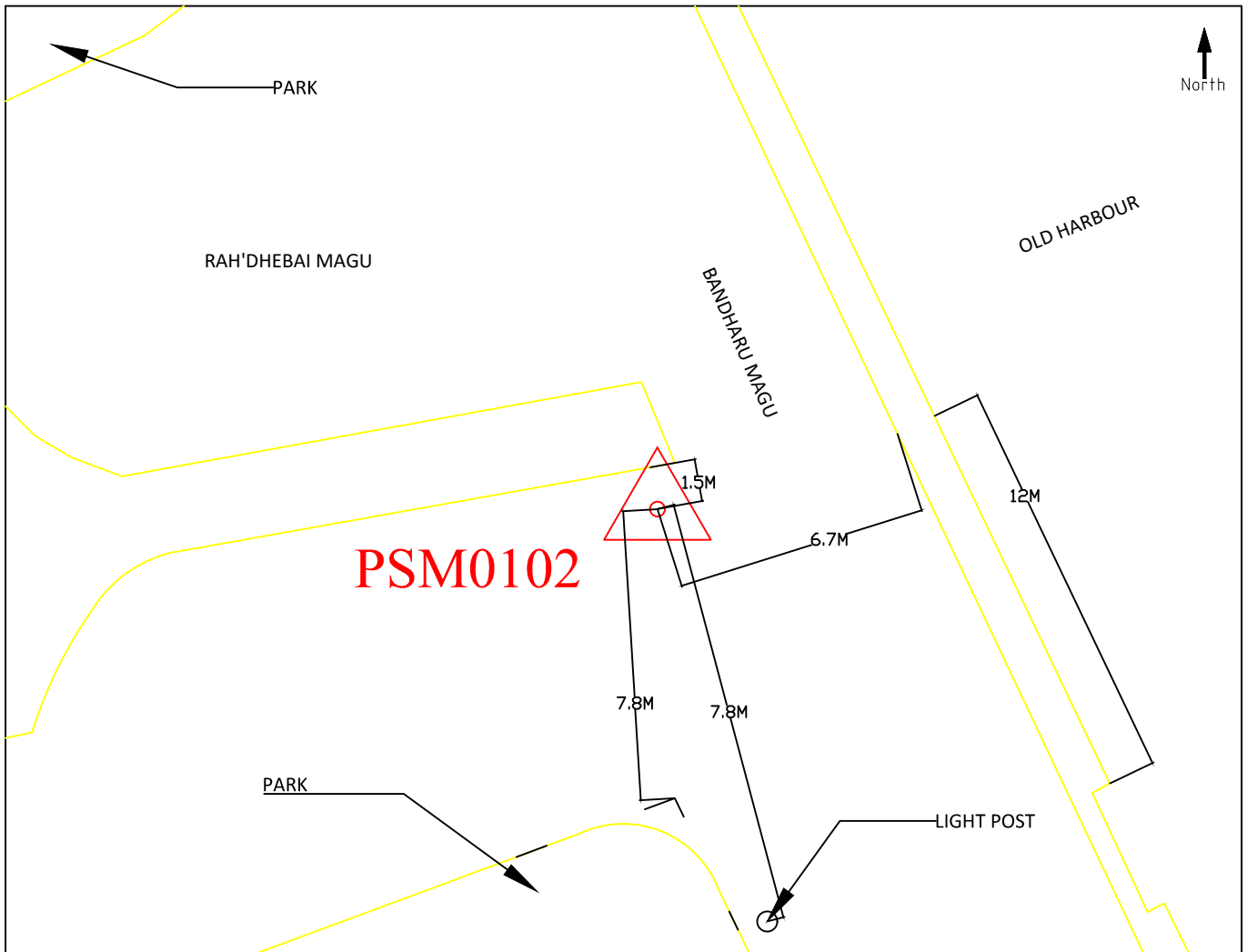
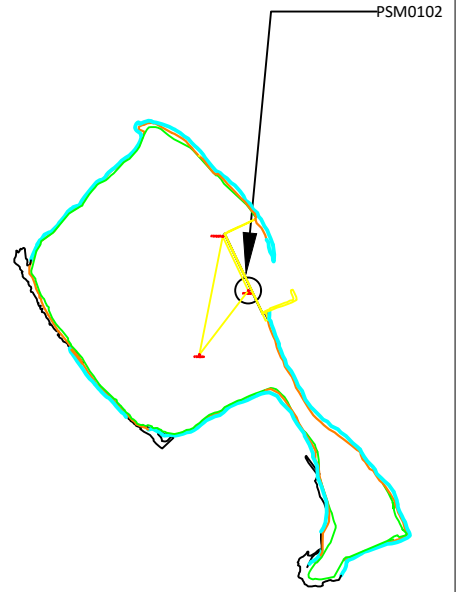


Height above Marker that horizon was mapped from 1.5 m

Magnetic Declination \_\_\_\_\_  
 Declination applied to this figure?  
 Yes  No



Locality



Sketched by: MUBEEN

Scale: Not to Scale

Date: 12th Oct 2020

# MALDIVES LAND SURVEY AUTHORITY

MINISTRY OF HOUSING AND INFRASTRUCTURE

Office (PABX): +(960) 3004300, Fax: +(960) 3004254

Email: survey@housing.gov.mv

Web: www.surveyofmaldives.gov.mv,

Ameenee Magu, Maafannu, Male', 20392, Maldives.



CONTROLPOINT DETAILS	Station Number	PSM 0103
Coordinate Information		
Geodetic	Grid	
WGS 84	UTM Zone 43	
Lat: 00°50'23.01536"N	E:	298030.580m
Long: 73°11'06.22922"E	N:	92861.967m
Ellp Height:	Orth Height:	+0.992
Island Name: Ga.Kolamaafushi	Date:	10 OCT 2020

## Monument description & method of survey:

-Established to Type A monument standard. -Stainless steel plate fixed to concrete by Four bolts - Horizontal coordinates fixed by GNSS Static survey.

-Below 200mm

-Reduce level of PSM 0102 was transferred to PSM 0103 by using the level difference obtained from the GNSS static survey.

## General site condition & access:

- Easily accessible area with wide angle of sky visibility
- Located in the Harbour area, in between BML ATM and court. Inter section of Moosa Kaleyfaanu Magu and Bandharu Magu

Owner: Ga.Kolamafushi Council- GOVT of Maldives

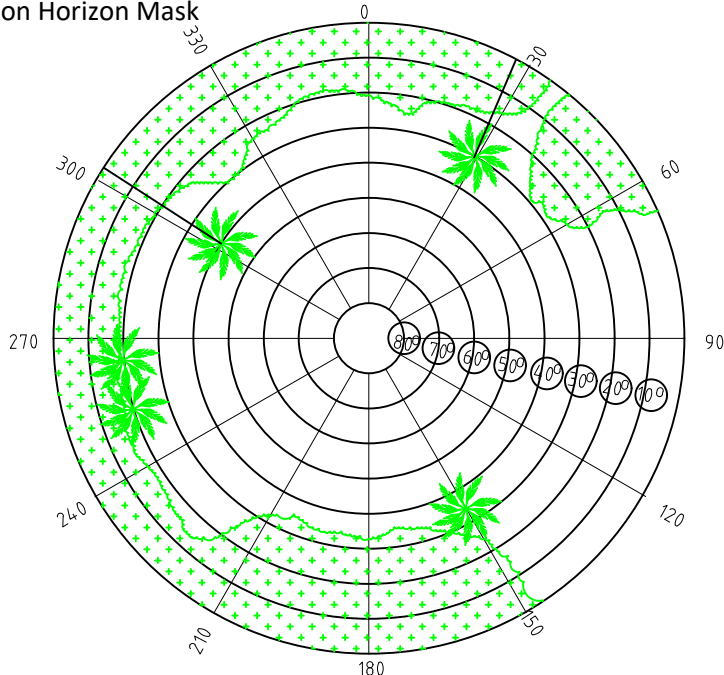


SITE INFORMATION

Station Number

P	S	M	0	1	0	3
---	---	---	---	---	---	---

Station Horizon Mask

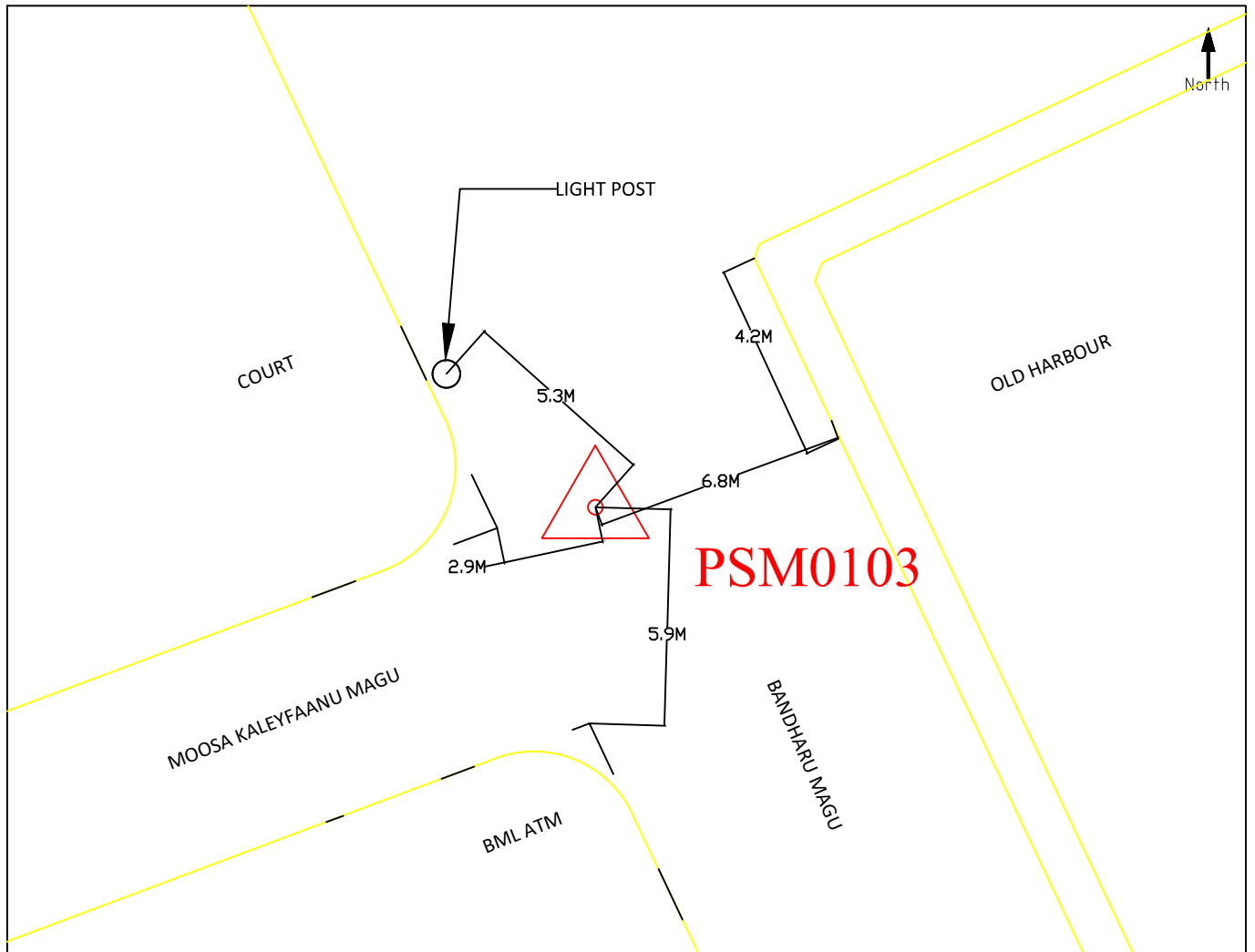
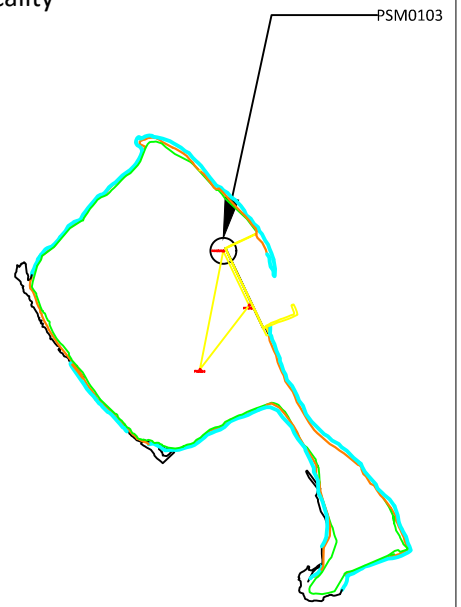


Height above Marker that horizon was mapped from 1.5 m

Magnetic Declination Declination applied to this figure?  
 Yes  No



Locality



Sketched by: MUBEEN

Scale: Not to Scale

Date: 12th Oct 2020

# MALDIVES LAND SURVEY AUTHORITY

MINISTRY OF HOUSING AND INFRASTRUCTURE

Office (PABX): +(960) 3004300, Fax: +(960) 3004254

Email: survey@housing.gov.mv

Web: www.surveyofmaldives.gov.mv,

Ameenee Magu, Maafannu, Male', 20392, Maldives.



CONTROLPOINT DETAILS	Station Number	PSM 0104
Coordinate Information		
Geodetic	Grid	
WGS 84	UTM Zone 43	
Lat: 00°50'13.72241"N	E:	297974.331m
Long: 73°11'04.41445"E	N:	92576.529m
Ellp Height:	Orth Height:	+0.894m
Island Name: Ga.Kolamaafushi	Date:	10 OCT 2020

## Monument description & method of survey:

-Established to Type A monument standard. -Stainless steel plate fixed to concrete by Four bolts - Horizontal coordinates fixed by GNSS Static survey.

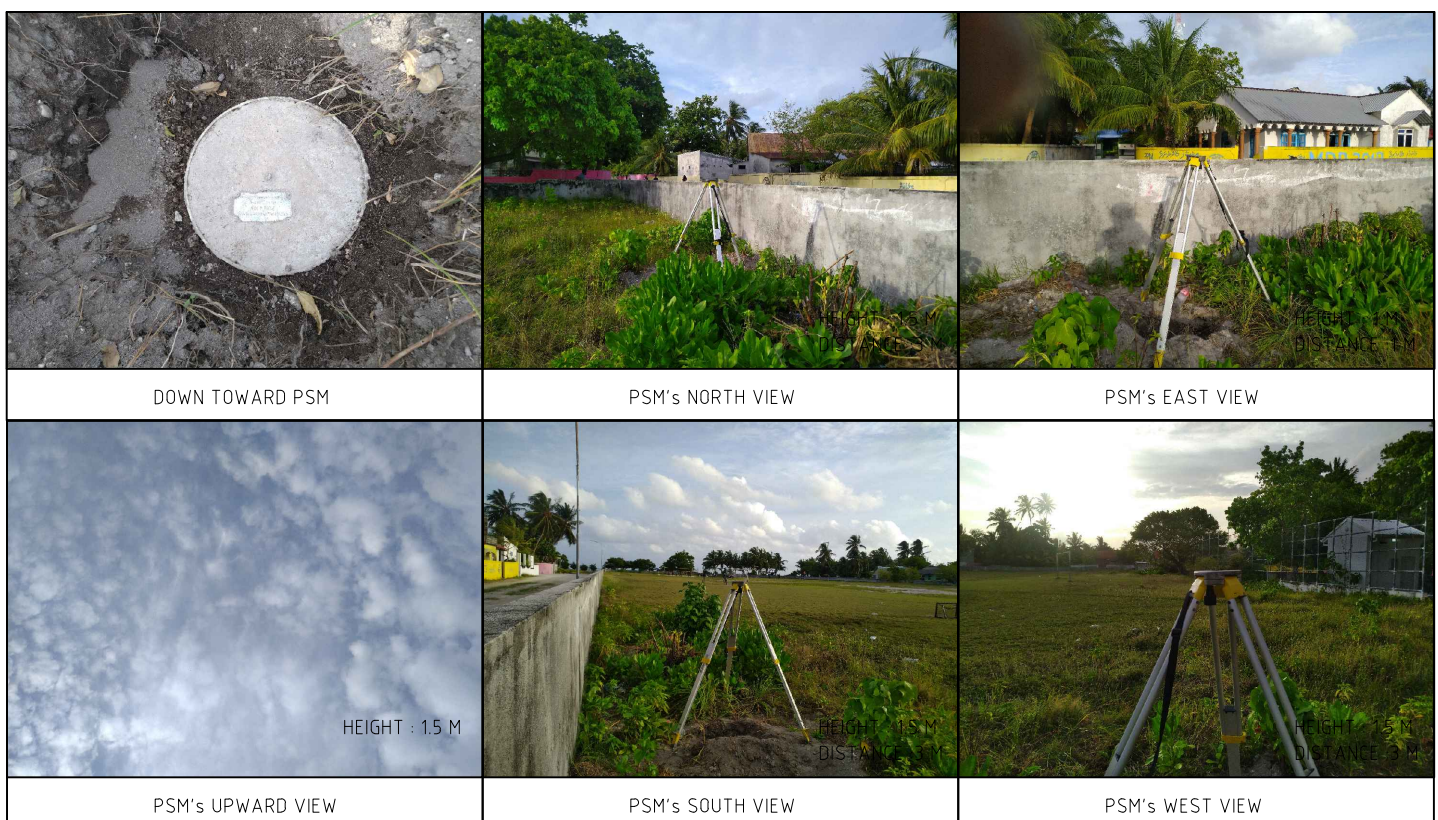
-Below 200mm

-Reduce level of PSM 0102 was transferred to PSM 0104 by using the level difference obtained from the GNSS static survey.

## General site condition & access:

- Easily accessible area with wide angle of sky visibility
- Located in the Stadium, towards to the inter section of Ameeni Magu and Kudhe'kathibeyaa Magu

**Owner:** Ga.Kolamafushi Council- GOVT of Maldives

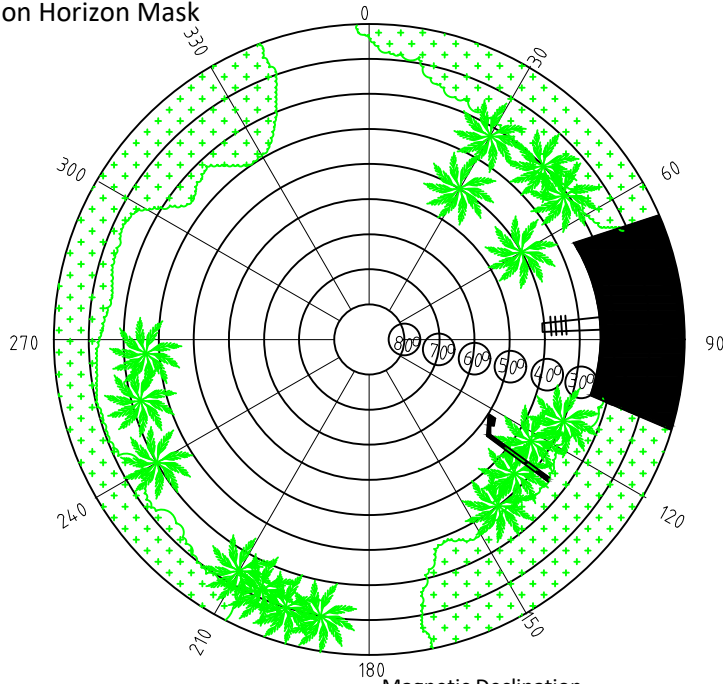


SITE INFORMATION

Station Number

P	S	M	0	1	0	4
---	---	---	---	---	---	---

Station Horizon Mask

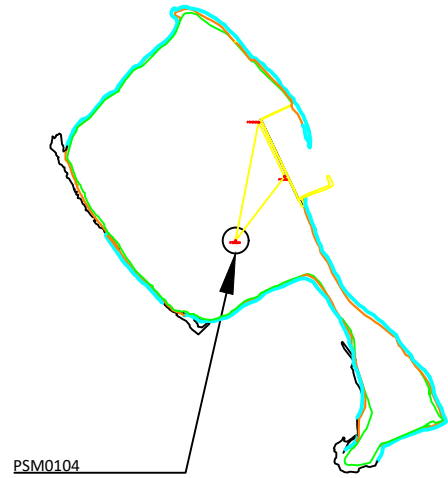


Height above Marker that horizon was mapped from 1.5 m

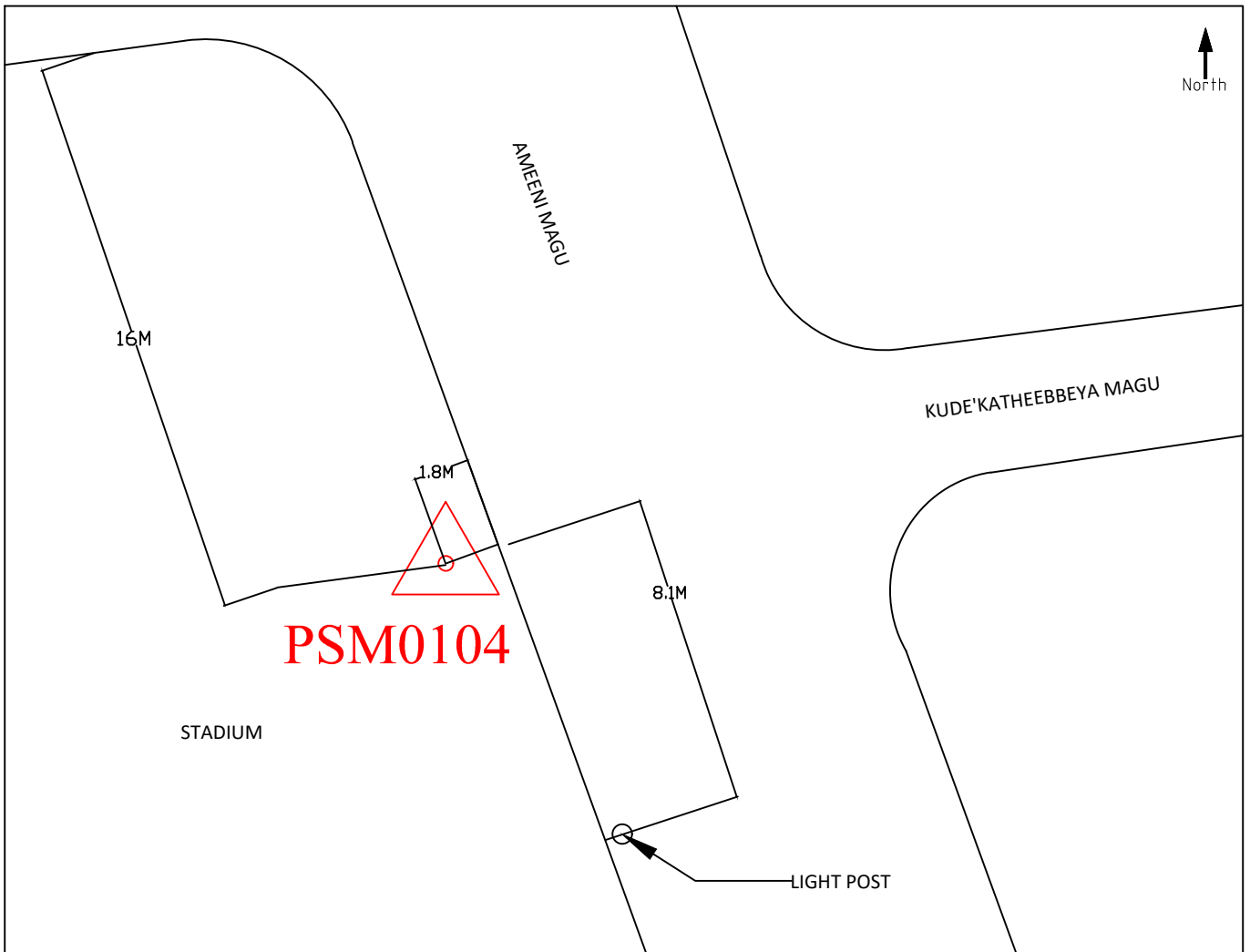
Magnetic Declination 3  
 Declination applied to this figure?  
 Yes  No



Locality



PSM0104



Sketched by: MUBEEN

Scale: Not to Scale

Date: 12th Oct 2020