

# MALDIVES LAND AND SURVEY AUTHORITY

MINISTRY OF HOUSING AND INFRASTRUCTURE

Office (PABX): +(960) 3004300, Fax: +(960) 3004254

Ameenee Magu, Maafannu, Male', 20392, Maldives.

Email: survey@housing.gov.mv

Web: www. surveyofmaldives.gov.mv



<b>CONTROL POINT DETAILS</b>	<b>Station Number</b> PSM0193
<b>Coordinate Information</b>	
<b>Geodetic</b>	<b>Grid</b>
<b>WGS 84</b>	<b>UTM Zone 43</b>
Lat:	E: 337437.061m
Long:	N: 38601.956m
Ellp Height:	Orth Height: 1.475m
<b>Island Name:</b> GA.Kanduhulhadhoo (LD0856)	<b>Date:</b> 2019-07-20

**Monument description & method of survey:**

Concrete casted in situ a diameter 0.25m pvc pipe, 1m in length, 1.5m s/s rod driven to ground as the centre with cross a mark.

Monument labelled with s/s plate stating the point ID.

- Above ground level (200 mm).
- Static Survey 3D control by GNSS post processing.
- .- vertical level transferred from PSM0194 by GNSS post processing.

**General site condition & access:**

- located inside cemetery near entrance orchid magu entrance
- easy to access

**Owner:** GA.Kanduhulhadhoo



DOWN TOWARD PSM



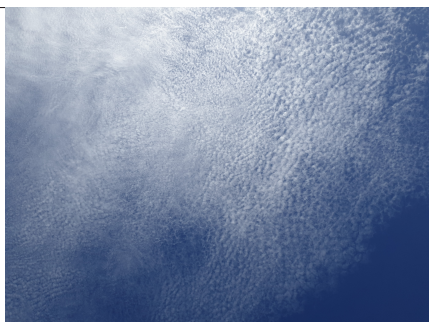
NORTH VIEW

Height 1.2m  
Distance 3m



EAST VIEW

Height 1.2m  
Distance 4.5m



FROM PSM UPTOWARD SKY

Height 1.2m



SOUTH VIEW

Height 1.2m  
Distance 4.5m



WEST VIEW

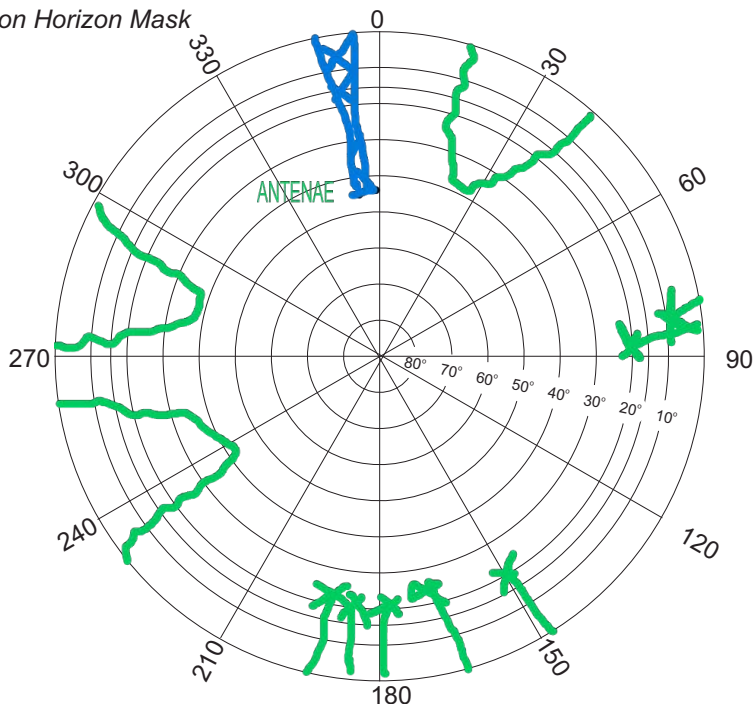
Height 1.2m  
Distance 3.5m

**SITE INFORMATION**

Station Number

P	S	M	0	1	9	3
---	---	---	---	---	---	---

Station Horizon Mask



Height above Marker that horizon was mapped from 1.5 m

Magnetic Declination \_\_\_\_\_  
 Declination applied to this figure?  
 Yes  No



Locality



Sketched by: **Shaanu**

Scale: Not to scale

Date: **2019-07-20**

# MALDIVES LAND AND SURVEY AUTHORITY

MINISTRY OF HOUSING AND INFRASTRUCTURE

Office (PABX): +(960) 3004300, Fax: +(960) 3004254

Ameenee Magu, Maafannu, Male', 20392, Maldives.

Email: survey@housing.gov.mv

Web: www. surveyofmaldives.gov.mv



<b>CONTROL POINT DETAILS</b>	<b>Station Number</b> PSM0194
<b>Coordinate Information</b>	
<b>Geodetic</b>	<b>Grid</b>
<b>WGS 84</b>	<b>UTM Zone 43</b>
Lat:	E: 337475.294m
Long:	N: 38737.955m
Ellp Height:	Orth Height: 1.195m
<b>Island Name:</b> GA.Kanduhulhadhoo (LD0856)	<b>Date:</b> 2019-07-20

**Monument description & method of survey:**

Concrete casted in situ to a diameter 0.25m pvc pipe, 1m in length, 1.5m s/s rod driven to ground as the centre with cross a mark.

Monument labelled with s/s plate stating the point ID.

- Below ground level (250mm).

- Static Survey 3D control by GNSS post processing.

- Vertical level transferred from TBM10 ( Established by MTCC on 15/03/2013 for Harbor project)

**General site condition & access:**

- located on the junction of Orchid magu and Ameeny magu near finifenmaage corner

- easy to access

**Owner:** GA.Kanduhulhadhoo



DOWN TOWARD PSM



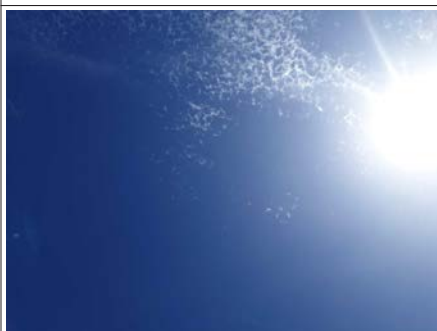
NORTH VIEW

Height 1.2m  
Distance 2m



EAST VIEW

Height 1.2m  
Distance 4.5m



FROM PSM UPTOWARD SKY

Height 1.2m



SOUTH VIEW

Height 1.2m  
Distance 5m



WEST VIEW

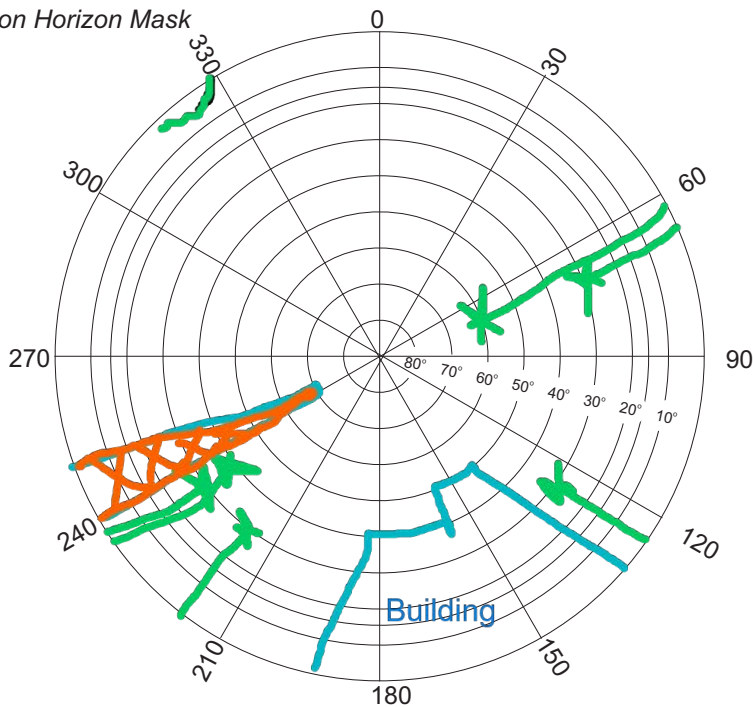
Height 1.2m  
Distance 6m

**SITE INFORMATION**

Station Number

P	S	M	0	1	9	4
---	---	---	---	---	---	---

Station Horizon Mask

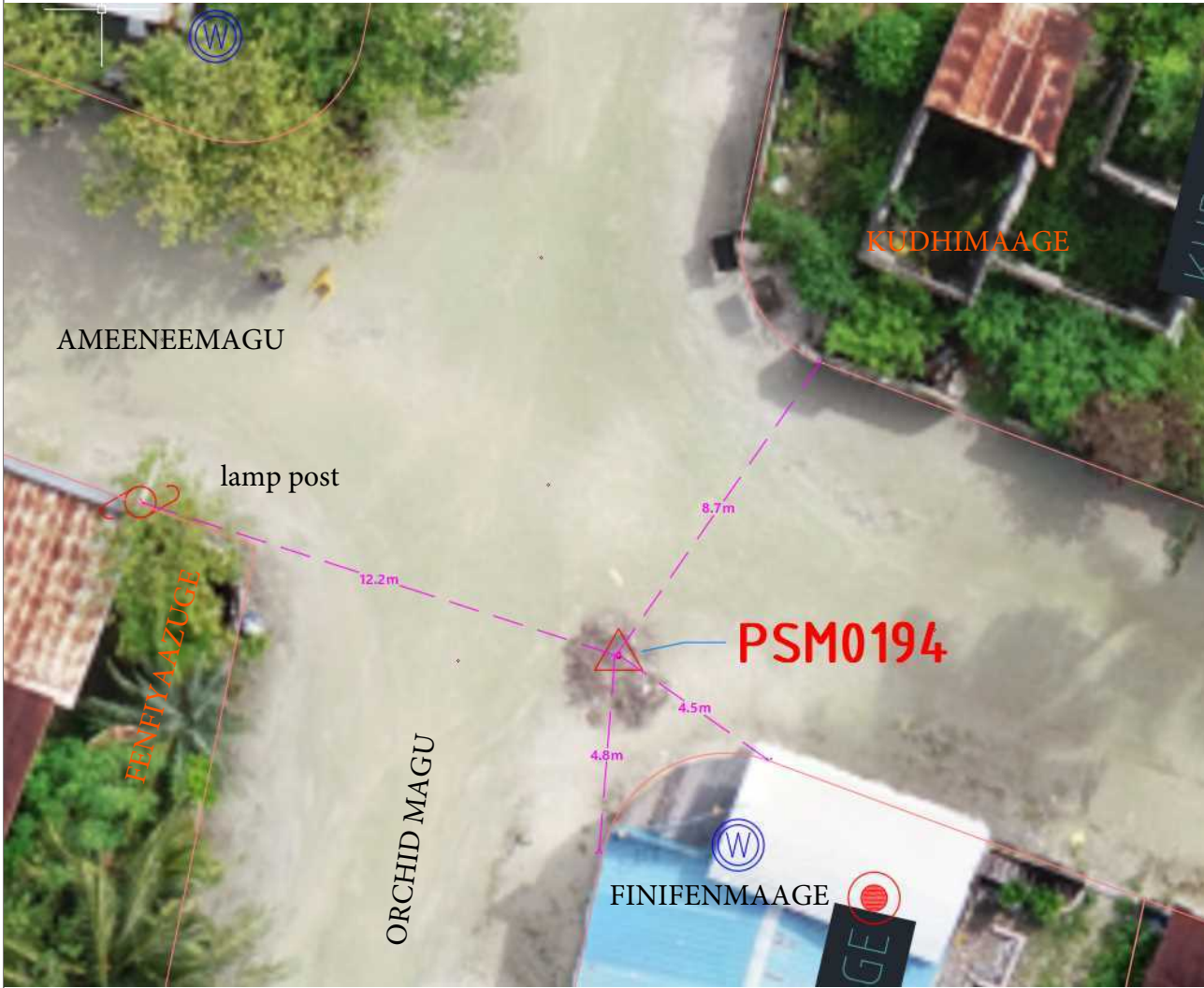


Height above Marker that horizon was mapped from 1.2 m

Magnetic Declination \_\_\_\_\_  
 Declination applied to this figure?  
 Yes  No



Locality



Sketched by: **Shaanu**

Scale: Not to scale

Date: **2019-07-20**

# MALDIVES LAND AND SURVEY AUTHORITY

MINISTRY OF HOUSING AND INFRASTRUCTURE

Office (PABX): +(960) 3004300, Fax: +(960) 3004254

Ameenee Magu, Maafannu, Male', 20392, Maldives.

Email: survey@housing.gov.mv

Web: www. surveyofmaldives.gov.mv



<b>CONTROL POINT DETAILS</b>	<b>Station Number</b> PSM0196
<b>Coordinate Information</b>	
<b>Geodetic</b>	<b>Grid</b>
<b>WGS 84</b>	<b>UTM Zone 43</b>
Lat:	E: 337335.080m
Long:	N: 38797.838m
Ellp Height:	Orth Height: 0.988m
<b>Island Name:</b> GA.Kanduhulhadhoo (LD0856)	<b>Date:</b> 2019-07-20

**Monument description & method of survey:**

Concrete casted in situ a diameter 0.25m pvc pipe, 1m in length, 1.5m s/s rod driven to ground as the centre with cross a mark.

Monument labelled with s/s plate stating the point ID.

- Below ground level (350mm).
- Static Survey 3D control by GNSS post processing.
- Vertical level transferred from PSM0194 GNSS post processing.

**General site condition & access:**

- located near the north west corner of park Ameenee Magu
- easy to access

**Owner:** GA.Kanduhulhadhoo



DOWN TOWARD PSM



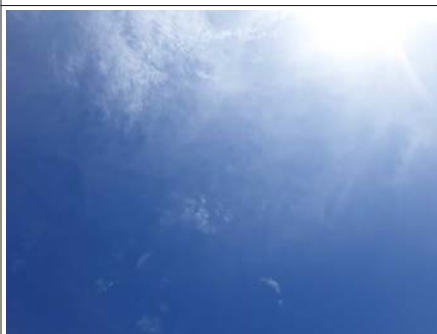
NORTH VIEW

Height 1.2m  
Distance 2.5m



EAST VIEW

Height 1.2m  
Distance 3m



FROM PSM UPTOWARD SKY

Height 1.2m



SOUTH VIEW

Height 1.2m  
Distance 5m



WEST VIEW

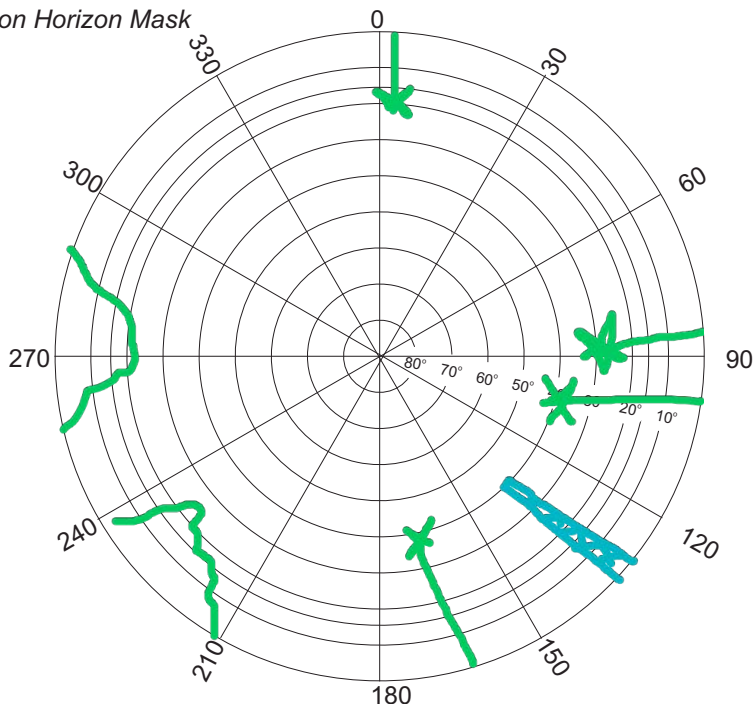
Height 1.2m  
Distance 3m

**SITE INFORMATION**

Station Number

P	S	M	0	1	9	6
---	---	---	---	---	---	---

Station Horizon Mask



Height above Marker that horizon was mapped from 1.2 m

Magnetic Declination \_\_\_\_\_  
 Declination applied to this figure?  
 Yes  No



Locality



HARBOUR



Sketched by: **Shaanu**

Scale: Not to scale

Date: **2019-07-20**