

MALDIVES LAND SURVEY AUTHORITY

MINISTRY OF HOUSING AND INFRASTRUCTURE

Office (PABX): +(960) 3004300, Fax: +(960) 3004254

Email: survey@housing.gov.mv

Web: www.surveyofmaldives.gov.mv,

Ameenee Magu, Maafannu, Male', 20392, Maldives.



CONTROLPOINT DETAILS		Station Number	PSM 5457
Coordinate Information			
Geodetic		Grid	
WGS 84		UTM Zone 43	
Lat: 2:56:06.57213N		E: 273368.4986	
Long: 72:57:39.93666E		N: 324632.649	
Ellp Height:		Orth Height: +5.749	
Island Name: DH.ALUVIFUSHI LD0623		Date: 09 NOVEMBER 2018	

Monument description & method of survey:

-PSM5457 was fixed on top of 152mm thick concrete slab (Transformer house 4m above ground), a stainless steel bolt was drilled on to the concrete slab. -Stainless steel plate fixed to concrete by Four bolts - Horizontal coordinates fixed by GNSS Static survey.

-Elevation reduced to Local MSL by using the tide prediction data form MET

General site condition & access:

- Easily accessible area with wide angle of sky visibility
- Located near on the concrete slab of the former house near water villa 2

Owner: Ocean Islands Pvt Ltd.

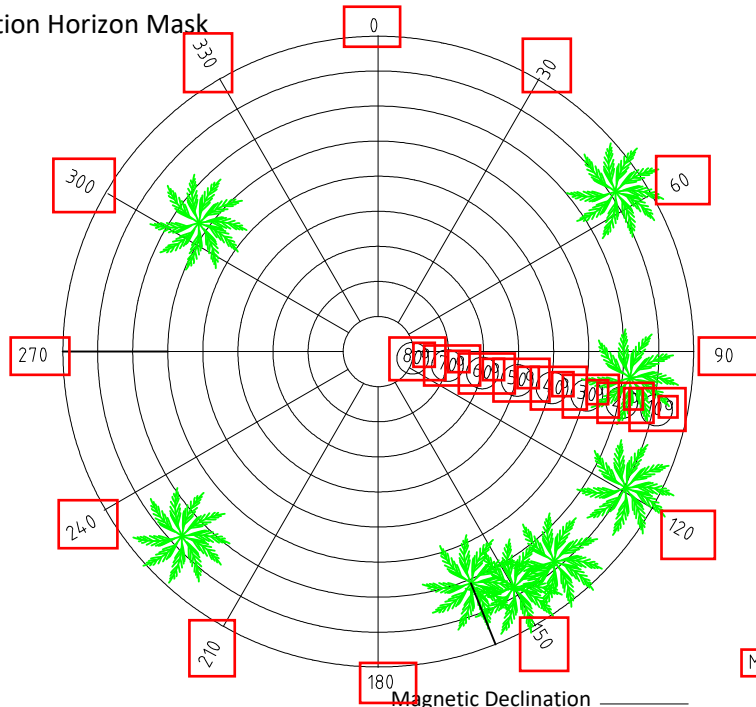


SITE INFORMATION

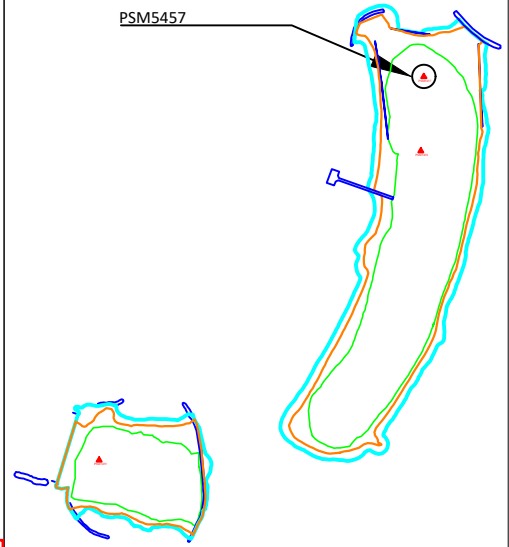
Station Number

P	S	M	5	4	5	7
---	---	---	---	---	---	---

Station Horizon Mask

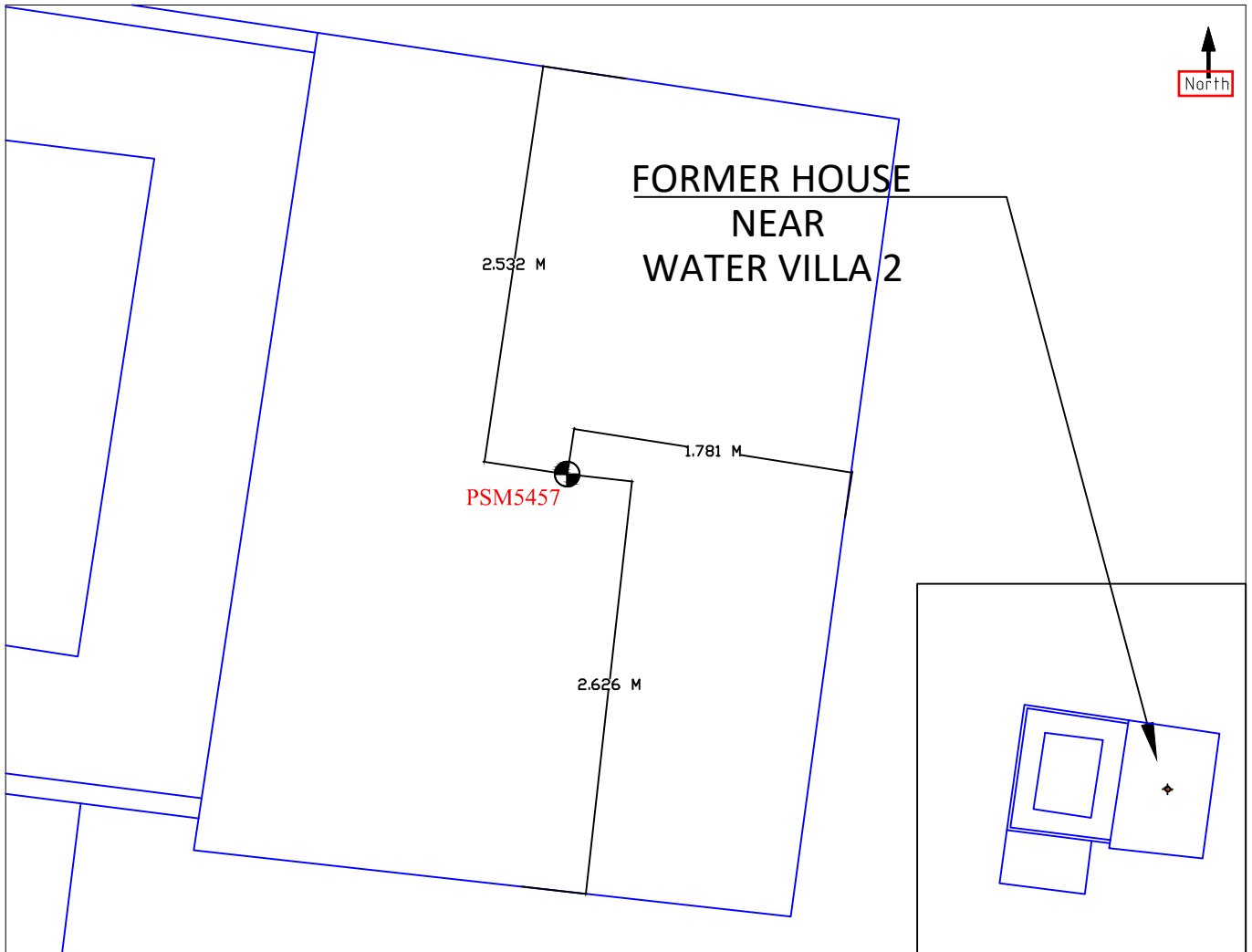
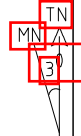


Locality



Height above Marker that horizon was mapped from 1.5 m

Magnetic Declination Declination applied to this figure?
 Yes No



Sketched by: MUBEEN

Scale: Not to Scale

Date: 9 SEPTEMBER 2018

MALDIVES LAND SURVEY AUTHORITY

MINISTRY OF HOUSING AND INFRASTRUCTURE

Office (PABX): +(960) 3004300, Fax: +(960) 3004254

Email: survey@housing.gov.mv

Web: www.surveyofmaldives.gov.mv,

Ameenee Magu, Maafannu, Male', 20392, Maldives.



CONTROLPOINT DETAILS	Station Number	PSM 5458
Coordinate Information		
Geodetic	Grid	
WGS 84	UTM Zone 43	
Lat: 2:56:03.75824N	E:	273364.845
Long: 72:57:39.82348E	N:	324546.204
Ellp Height:	Orth Height:	+4.327
Island Name: DH.ALUVIFUSHI LD0623	Date: 09 NOVEMBER 2018	

Monument description & method of survey:

-PSM5458 was fixed on top of 152mm thick concrete slab (Main kitchen back door 3m above ground) , a stainless steel bolt was drilled on to the concrete slab. -Stainless steel plate fixed to concrete by Four bolts - Horizontal coordinates fixed by GNSS Static survey.

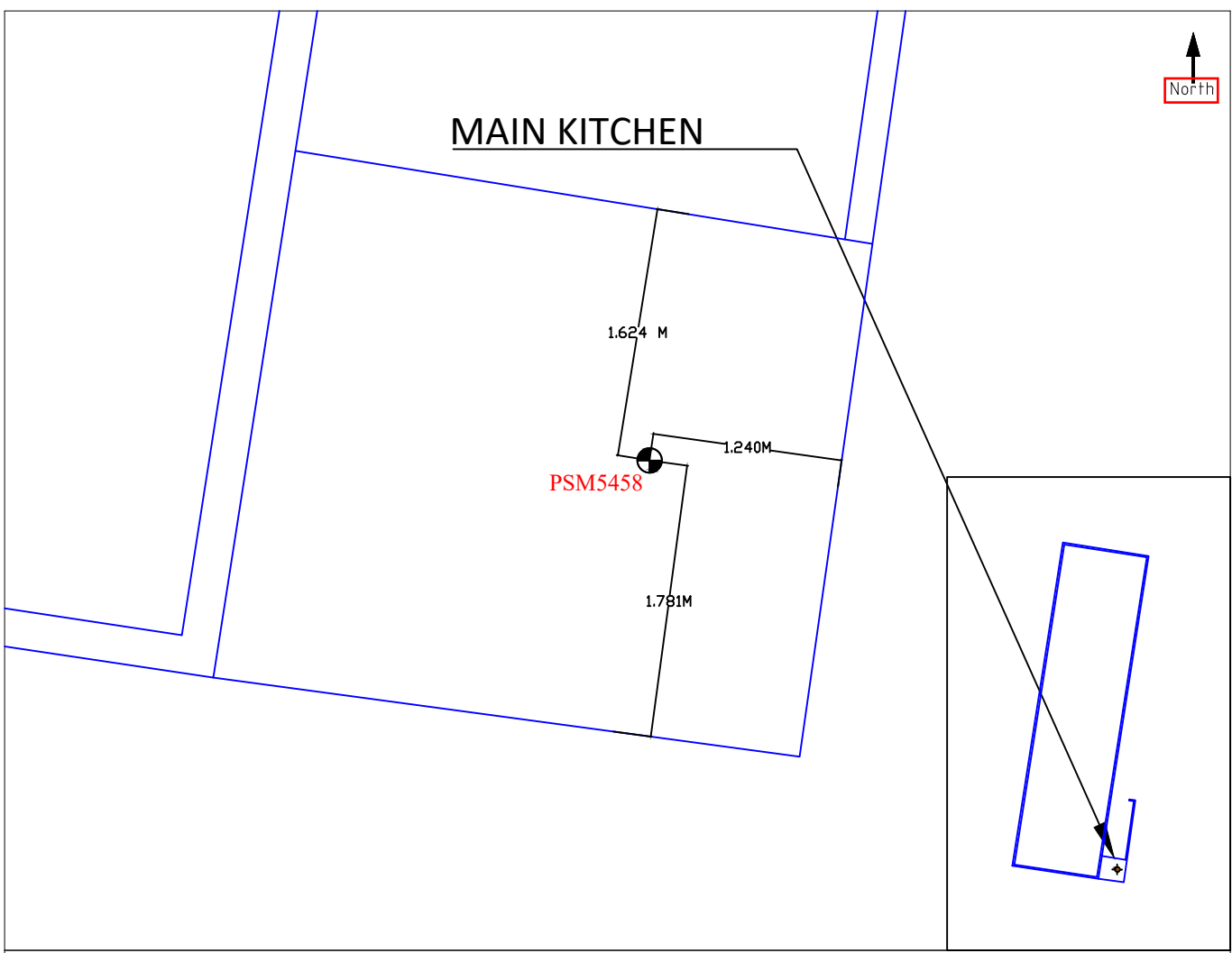
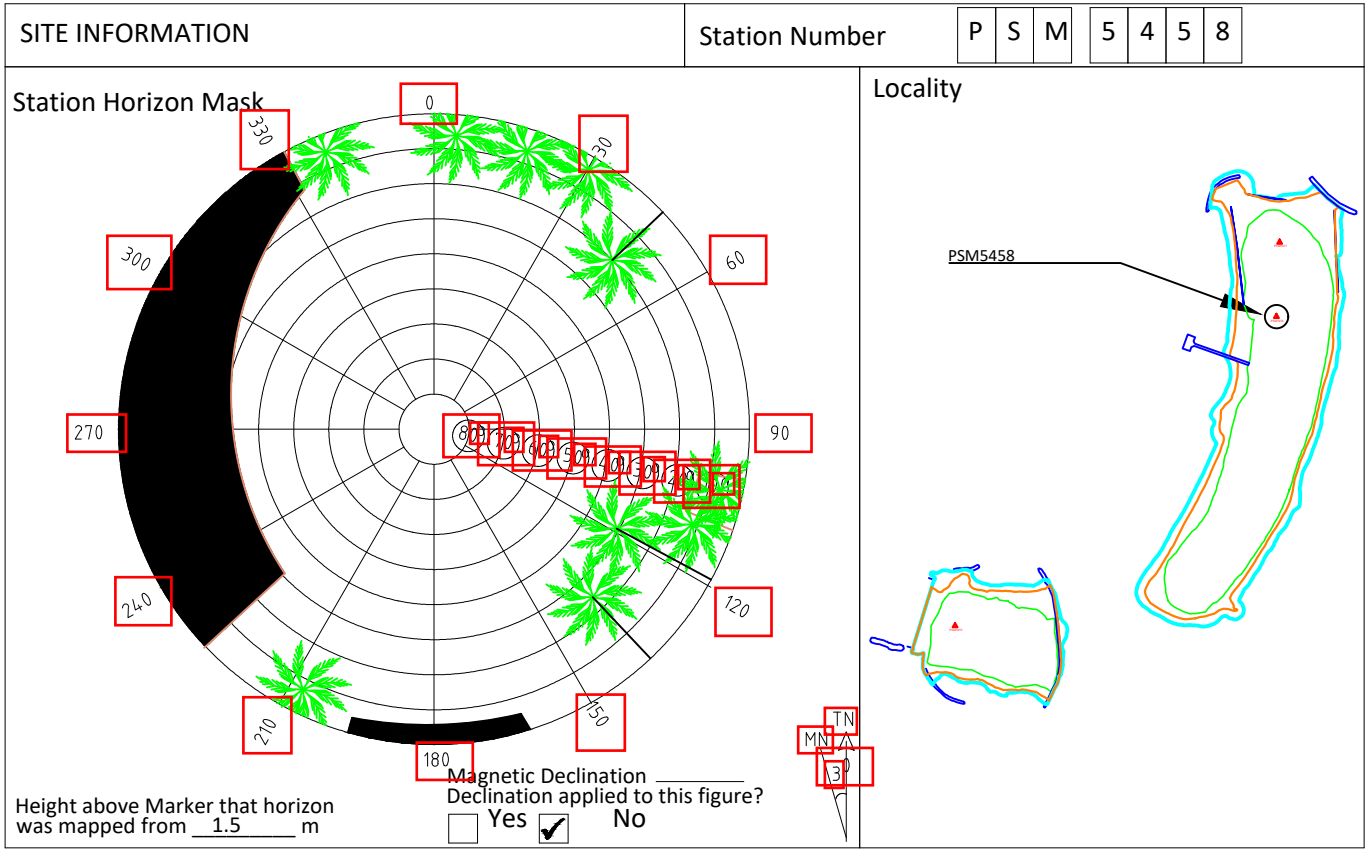
-Reduce level of PSM 5457 was transferred to PSM 5458 by using the level difference obtained from the GNSS static survey.

General site condition & access:

- Easily accessible area with wide angle of sky visibility
- Located on the concrete slab of the main Kitchen back door

Owner: Ocean Islands Pvt Ltd.





Sketched by: MUBEEN Scale: Not to Scale Date: 9 SEPTEMBER 2018

MALDIVES LAND SURVEY AUTHORITY

MINISTRY OF HOUSING AND INFRASTRUCTURE

Office (PABX): +(960) 3004300, Fax: +(960) 3004254

Email: survey@housing.gov.mv

Web: www.surveyofmaldives.gov.mv,

Ameenee Magu, Maafannu, Male', 20392, Maldives.



CONTROLPOINT DETAILS	Station Number	PSM 5459
Coordinate Information		
Geodetic	Grid	
WGS 84	UTM Zone 43	
Lat: 2:55:52.03951N	E:	272991.084
Long: 72:57:27.74464E	N:	324186.848
Ellp Height:	Orth Height:	+5.953
Island Name: DH.ALUVIFUSHI LD0623	Date: 09 NOVEMBER 2018	

Monument description & method of survey:

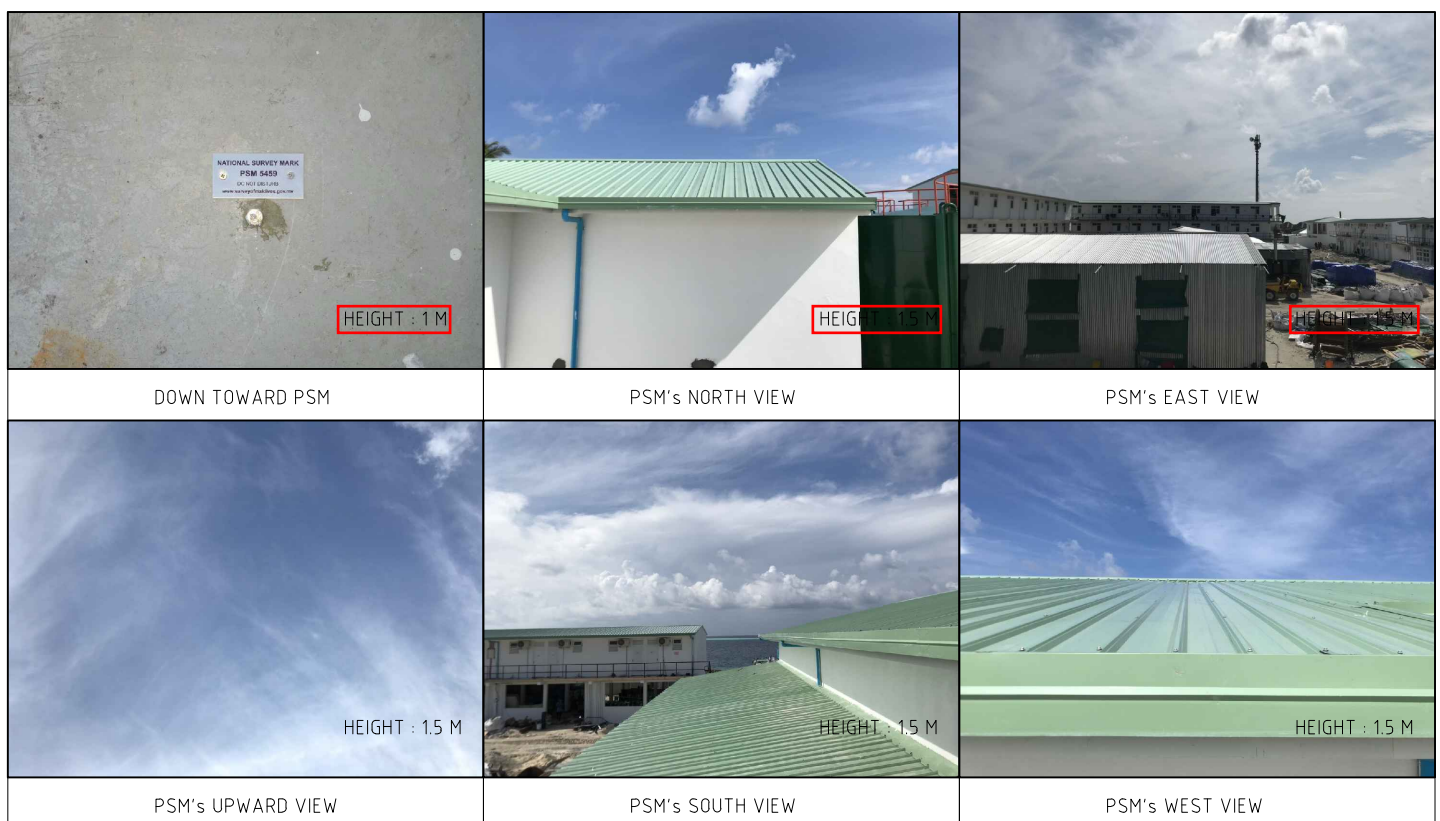
-PSM5459 was fixed on top of 152mm thick concrete slab (Transformer house adjacent to the power house 4m above ground) , a stainless steel bolt was drilled on a concrete roof sheet. -Stainless steel plate fixed to concrete by Four bolts - Horizontal coordinates fixed by GNSS Static survey.

-Reduce level of PSM 5457 was transferred to PSM 5459 by using the level difference obtained from the GNSS static survey.

General site condition & access:

- Easily accessible area with wide angle of sky visibility
- Located on the concrete slab of the former house of power house

Owner: Ocean Islands Pvt Ltd.

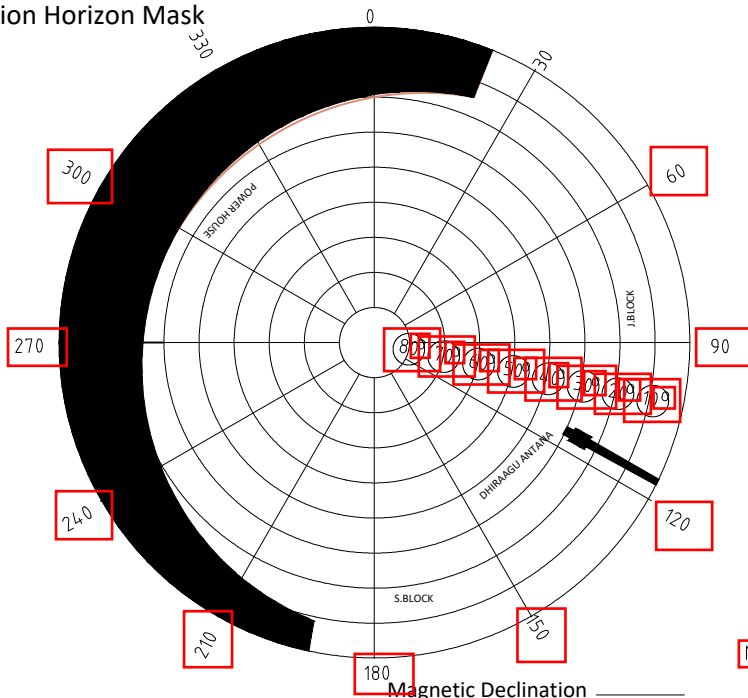


SITE INFORMATION

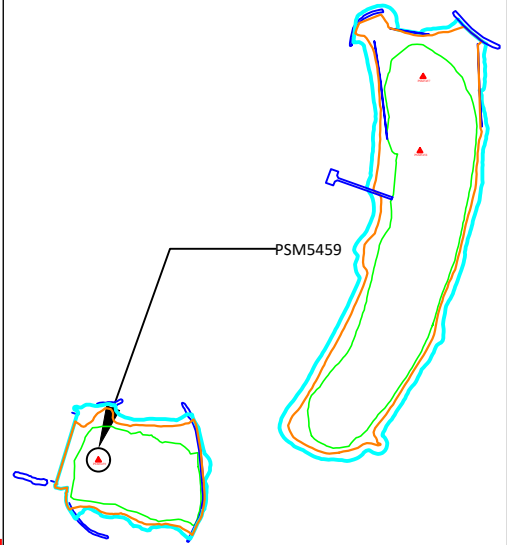
Station Number

P	S	M	5	4	5	9
---	---	---	---	---	---	---

Station Horizon Mask



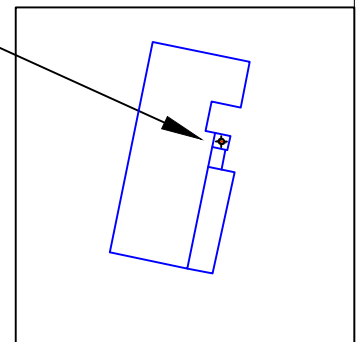
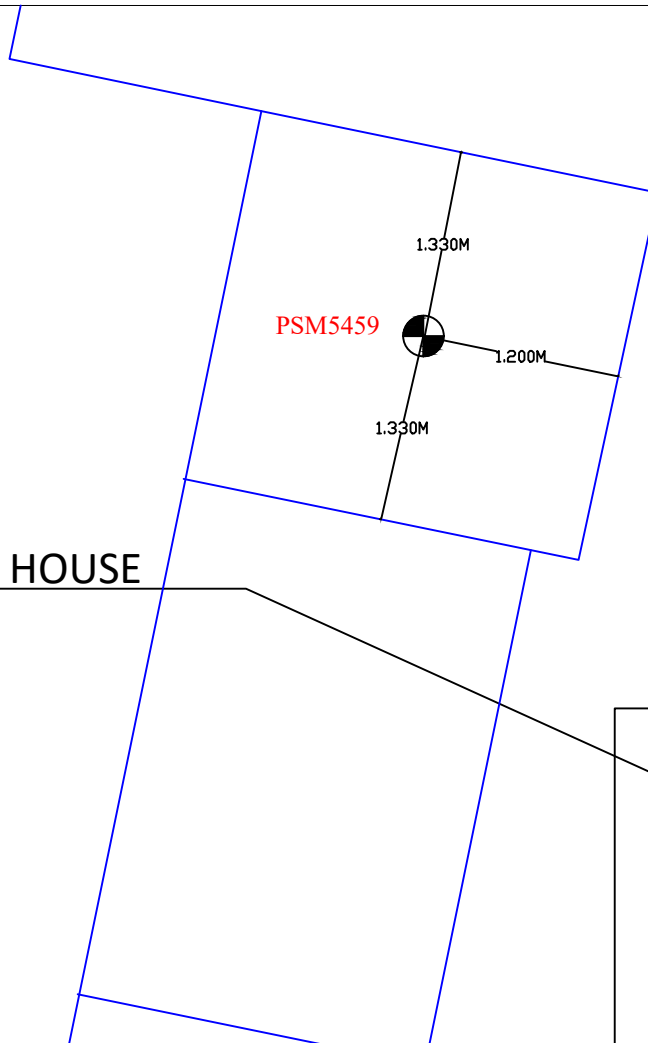
Locality



Height above Marker that horizon was mapped from 1.5 m

Magnetic Declination
Declination applied to this figure?
 Yes No

POWER HOUSE



Sketched by: MUBEEN

Scale: Not to Scale

Date: 9 SEPTEMBER 2018