

MALDIVES LAND AND SURVEY AUTHORITY

Ameenee Magu, Maafannu, Maale, 20392, Maldives.
 Office: +(960) 7384892
 Email: survey@mlsa.gov.mv
 Web: www.mlsa.gov.mv



CONTROL POINT DETAILS		<i>Station Number</i>	PSM0638
Coordinate Information			
Geodetic		Grid	
WGS 84		UTM Zone 43	
Lat:	5°16'53.58870"N	E:	293506.943m
Long:	73°08'12.35329"E	N:	584095.952m
Ellp Height:	-95.404m	Orth Height:	+0.843m
Island Name:	B. Kamadhoo (LD0518)	Date:	30th January 2024

Monument description & method of survey:

- Monument Type A - Concrete casted in-situ to a 300mm x 300mm x 1m long rectangular formwork.
- A 1.5m stainless steel rod driven to the ground before concrete casting with the cross marked.
- Finished same level as ground level.
- Static survey 3D control by GNSS post processing.
- Vertical datum MSL height corrected to relative to PSM0640.

General site condition & access:

- Located at the mosque at a corner.
- Easily accessible.

Owner: B. Kamadhoo Island Council

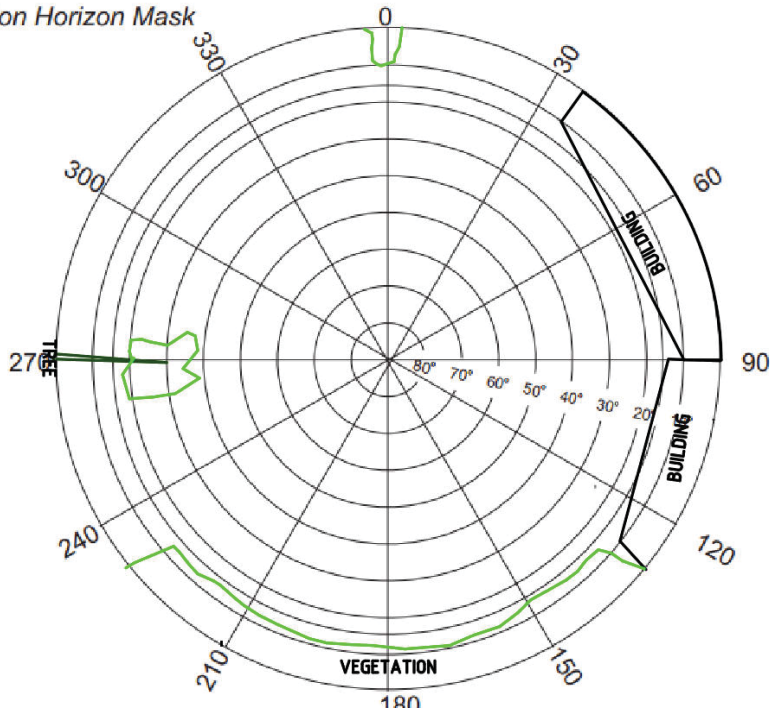


SITE INFORMATION

Station Number

P	S	M	0	6	3	8
---	---	---	---	---	---	---

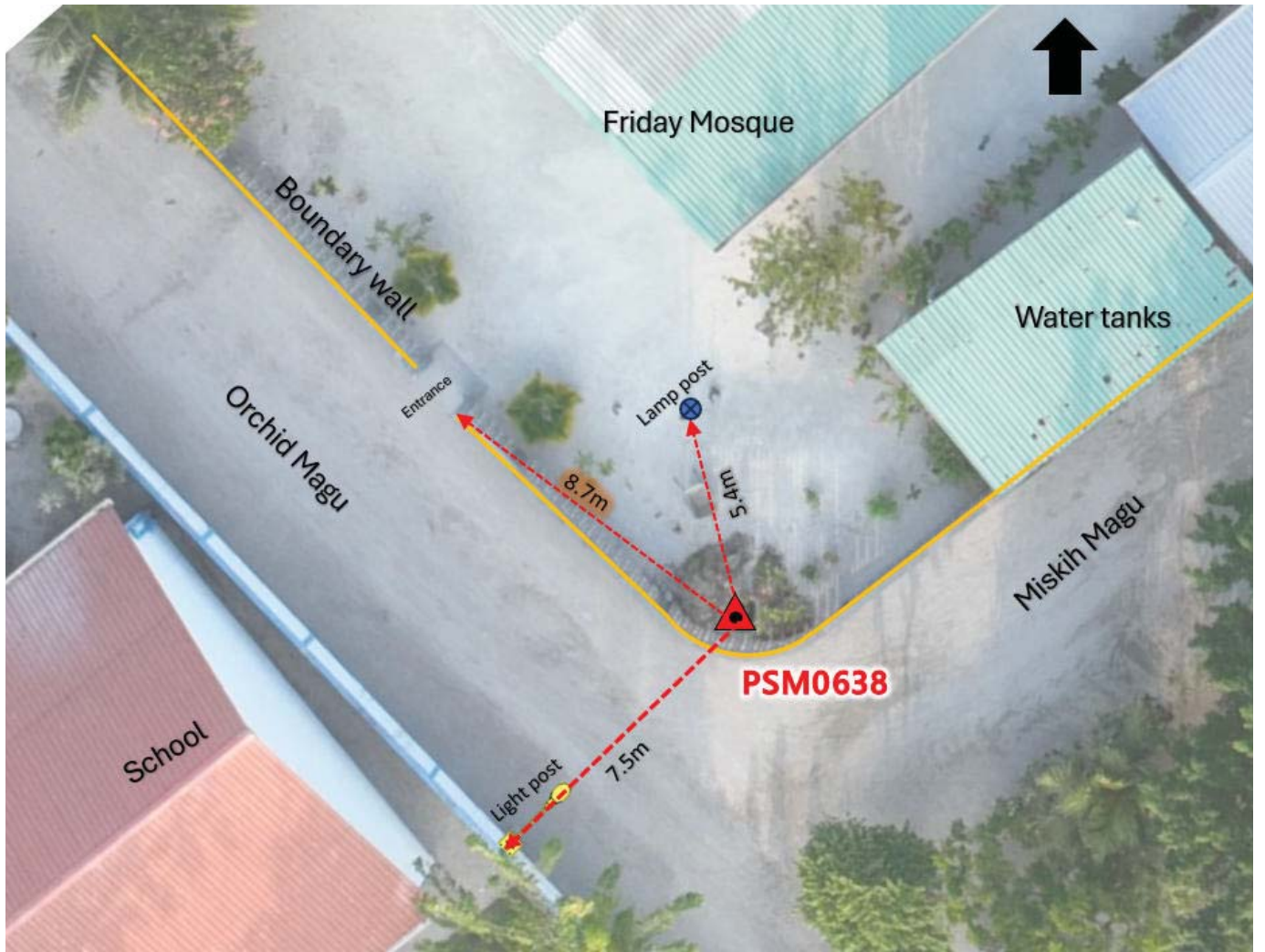
Station Horizon Mask



Height above Marker that horizon was mapped from 1.5 m

Magnetic Declination
Declination applied to this figure?
 Yes No

Locality



Sketched by: Razeen

Scale: Not to scale

Date: 30th January 2024

MALDIVES LAND AND SURVEY AUTHORITY

Ameenee Magu, Maafannu, Maale, 20392, Maldives.
 Office: +(960) 7384892
 Email: survey@mlsa.gov.mv
 Web: www.mlsa.gov.mv



CONTROL POINT DETAILS		<i>Station Number</i>	PSM0639
Coordinate Information			
Geodetic		Grid	
WGS 84		UTM Zone 43	
Lat:	5°17'03.94108"N	E:	293569.520m
Long:	73°08'14.35437"E	N:	584413.808m
Ellp Height:	-95.053	Orth Height:	+1.201m
Island Name:	B. Kamadhoo (LD0518)	Date:	30th January 2024

Monument description & method of survey:

- Monument Type A - Concrete casted in-situ to a 300mm x 300mm x 1m long rectangular formwork.
- A 1.5m stainless steel rod driven to the ground before concrete casting with the cross marked.
- 100mm above ground level.
- Static survey 3D control by GNSS post processing.
- Vertical datum MSL height corrected relative to PSM0640.
- Inter-visible to PSM0640.

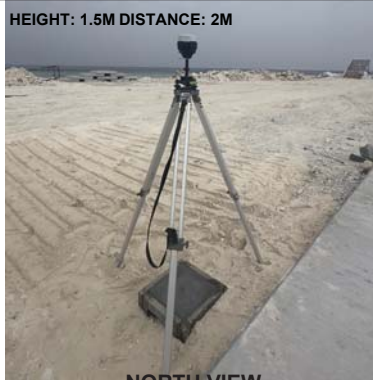
General site condition & access:

- Located at the harbour area near the northwestern quay wall pavement corner.
- Easily accessible.

Owner: B. Kamadhoo Island Council



DOWN TOWARD PSM



NORTH VIEW



EAST VIEW



FROM PSM UPTOWARD SKY



SOUTH VIEW



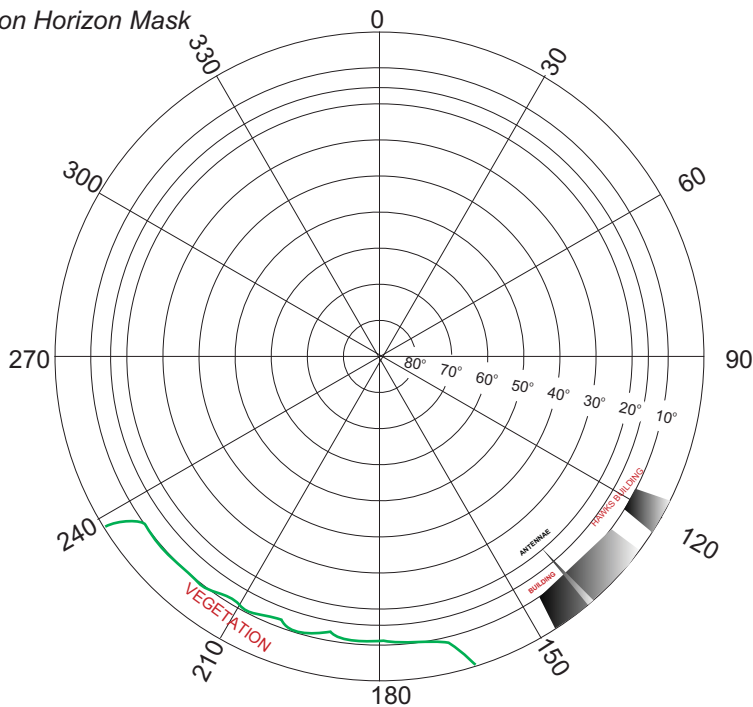
WEST VIEW

SITE INFORMATION

Station Number

P	S	M	0	6	3	9
---	---	---	---	---	---	---

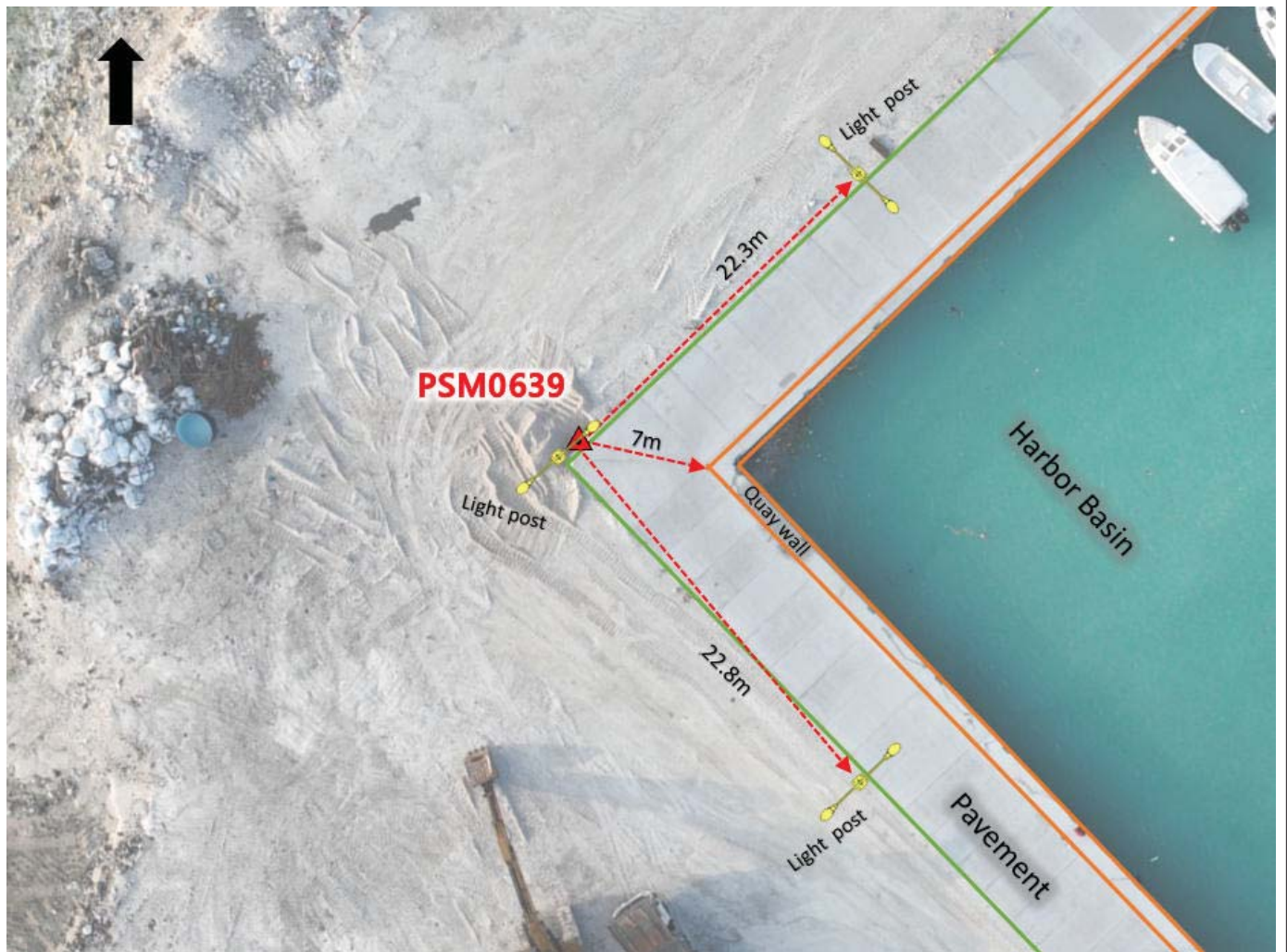
Station Horizon Mask



Height above Marker that horizon was mapped from **1.5** m

Magnetic Declination _____
 Declination applied to this figure?
 Yes No

Locality



Sketched by: Razeen

Scale: Not to scale

Date: 30th January 2024

MALDIVES LAND AND SURVEY AUTHORITY

Ameenee Magu, Maafannu, Maale, 20392, Maldives.
 Office: +(960) 7384892
 Email: survey@mlsa.gov.mv
 Web: www.mlsa.gov.mv



CONTROL POINT DETAILS		<i>Station Number</i>	PSM0640
Coordinate Information			
Geodetic		Grid	
WGS 84		UTM Zone 43	
Lat:	5°16'59.63730"N	E:	293754.172m
Long:	73°08'20.36334"E	N:	584281.035m
Ellp Height:	-95.047m	Orth Height:	+1.211m
Island Name:	B. Kamadhoo (LD0518)	Date:	30th January 2024

Monument description & method of survey:

- Monument Type A - Concrete casted in-situ to a 300mm x 300mm x 1m long rectangular formwork.
- A 1.5m stainless steel rod driven to the ground before concrete casting with the cross hair marked.
- About 150mm above ground level.
- Static survey 3D control by GNSS post processing.
- Vertical height corrected using tide prediction data of Hulhule.

General site condition & access:

- Located at the harbour area near the southeastern quay wall pavement corner.
- Easily accessible.

Owner: B. Kamadhoo Island Council

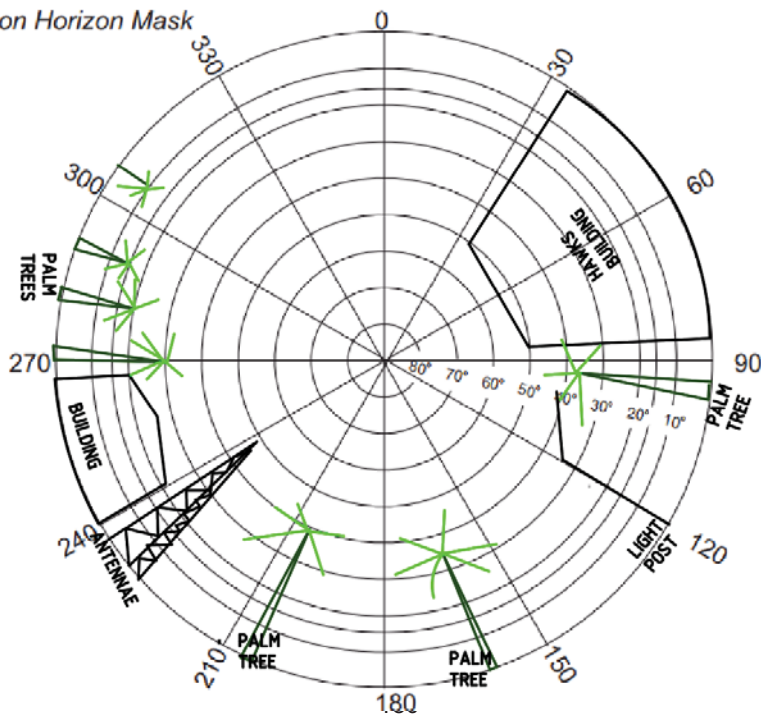


SITE INFORMATION

Station Number

P	S	M	0	6	4	0
---	---	---	---	---	---	---

Station Horizon Mask

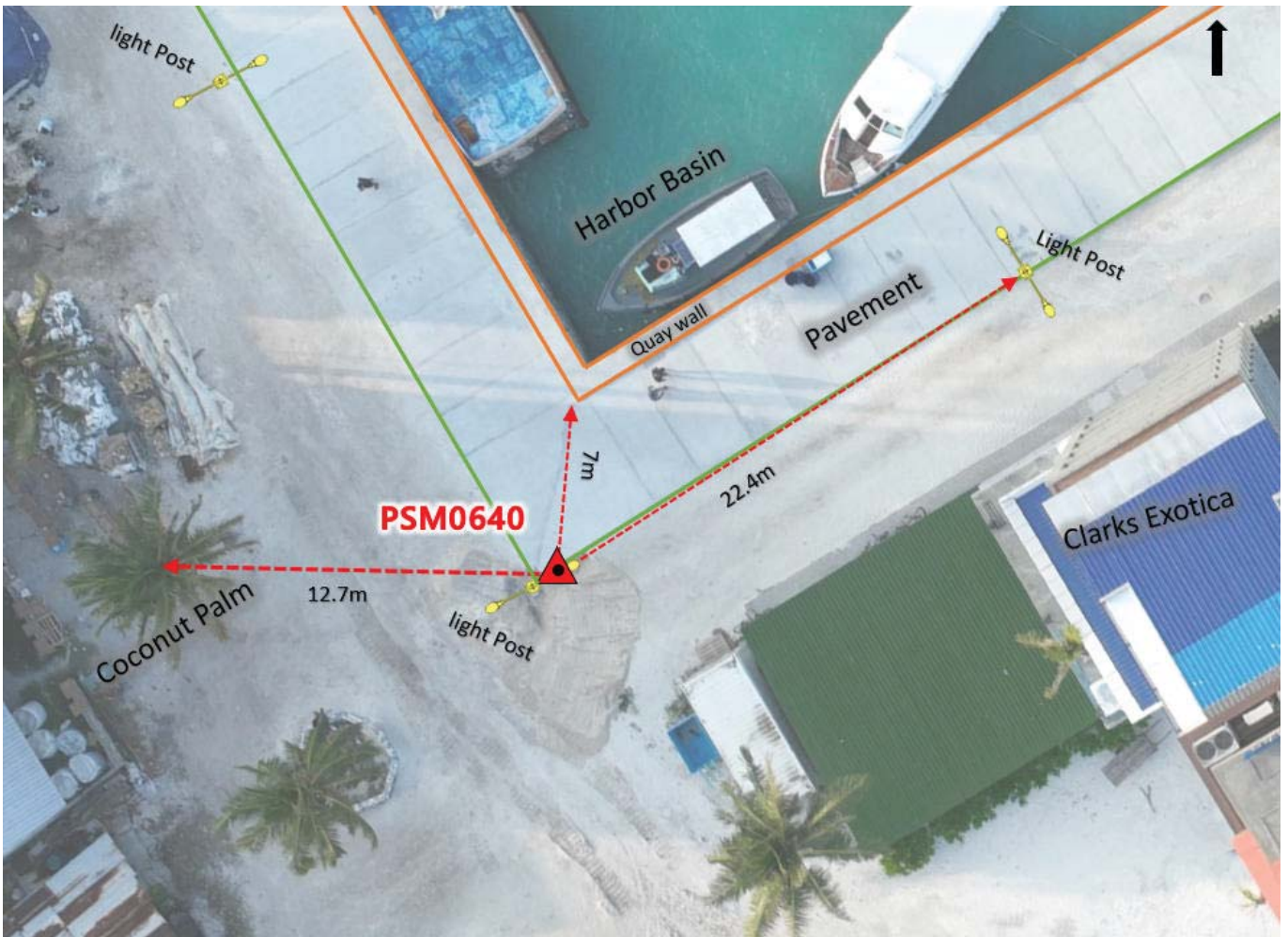


Height above Marker that horizon was mapped from 1.5 m

Magnetic Declination _____
 Declination applied to this figure?
 Yes No



Locality



Sketched by: Razeen

Scale: Not to scale

Date: 30th January 2024