

MALDIVES LAND AND SURVEY AUTHORITY

MINISTRY OF HOUSING AND INFRASTRUCTURE

Office (PABX): +(960) 3004300, Fax: +(960) 3004254

Ameenee Magu, Maafannu, Male', 20392, Maldives.

Email: survey@housing.gov.mv

Web: www. surveyofmaldives.gov.mv



CONTROL POINT DETAILS	Station Number PSM0656
Coordinate Information	
Geodetic	Grid
WGS 84	UTM Zone 43
Lat: 4°13'03.20734"N	E: 262850.172
Long: 72°51'48.74133"E	N: 466500.566
Ellp Height: -94.436	Orth Height: 1.038
Island Name: LD0916 Alifu Alifu Ukulhas	Date: 4-May-24

Monument description & method of survey:

- SS mushroom bolt driven to the Quay wall corner , center mark punched.
PSM plate label attached with screws to the quay wall showing PSM number finished to quay wall level .

Static Survey 3D control by GNSS static post processing.
Vertical elevation related MSL was transferred from PSM0174 by GNSS static post processing.
PSM0656 is inter-visible to PSM0657

General site condition & access:

- located at west side of the harbour on corner of quay wall.
- Easily accessible.

Owner: Alifu Alifu Ukulhas council.



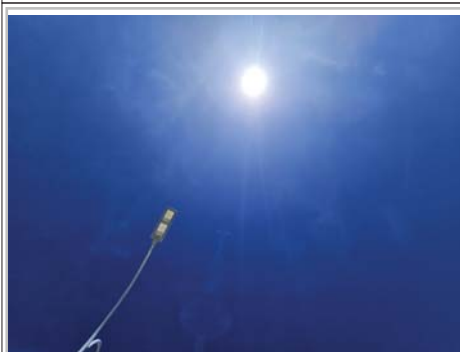
DOWN TOWARD PSM H: 1.5m



NORTH VIEW D: 3m



EAST VIEW D: 3m



FROM PSM UPTOWARD SKY H: 1.8m



H: 1.5m

SOUTH VIEW D: 3m



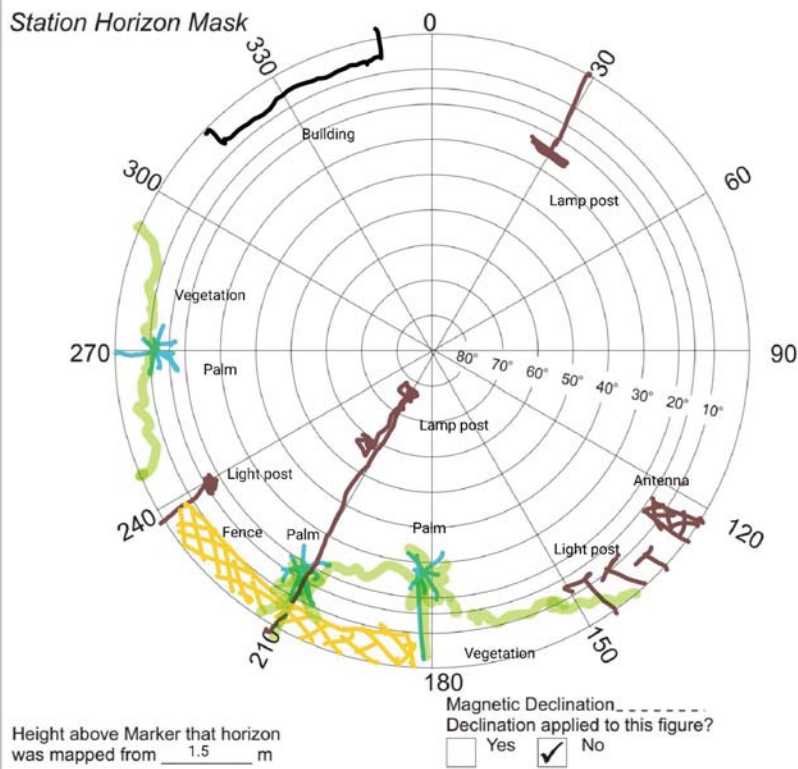
H: 1.5m

WEST VIEW D: 3m

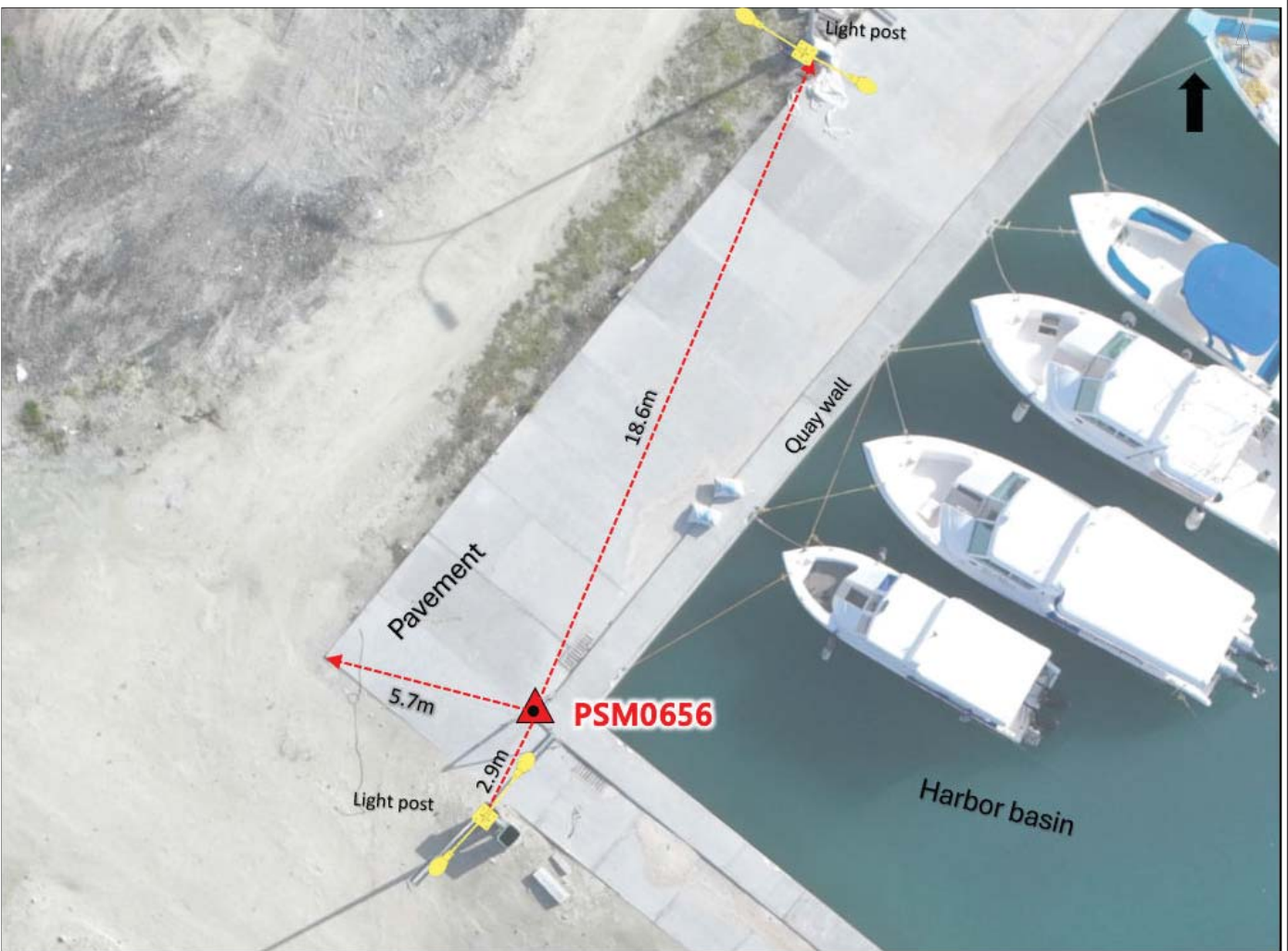
SITE INFORMATION

Station Number

P	S	M	0	6	5	6
---	---	---	---	---	---	---



Locality



Sketched by: saeed

Scale: Not to scale

Date: 4-May-24

MALDIVES LAND AND SURVEY AUTHORITY

MINISTRY OF HOUSING AND INFRASTRUCTURE

Office (PABX): +(960) 3004300, Fax: +(960) 3004254

Ameenee Magu, Maafannu, Male', 20392, Maldives.

Email: survey@housing.gov.mv

Web: www. surveyofmaldives.gov.mv



CONTROL POINT DETAILS	Station Number PSM0657
Coordinate Information	
Geodetic	Grid
WGS 84	UTM Zone 43
Lat: 4°12'59.25419"N	E: 263091.039
Long: 72°51'56.56033"E	N: 466378.442
Ellp Height: -94.392	Orth Height: 1.081
Island Name: LD0916 Alifu Alifu Ukulhas	Date: 4-May-24

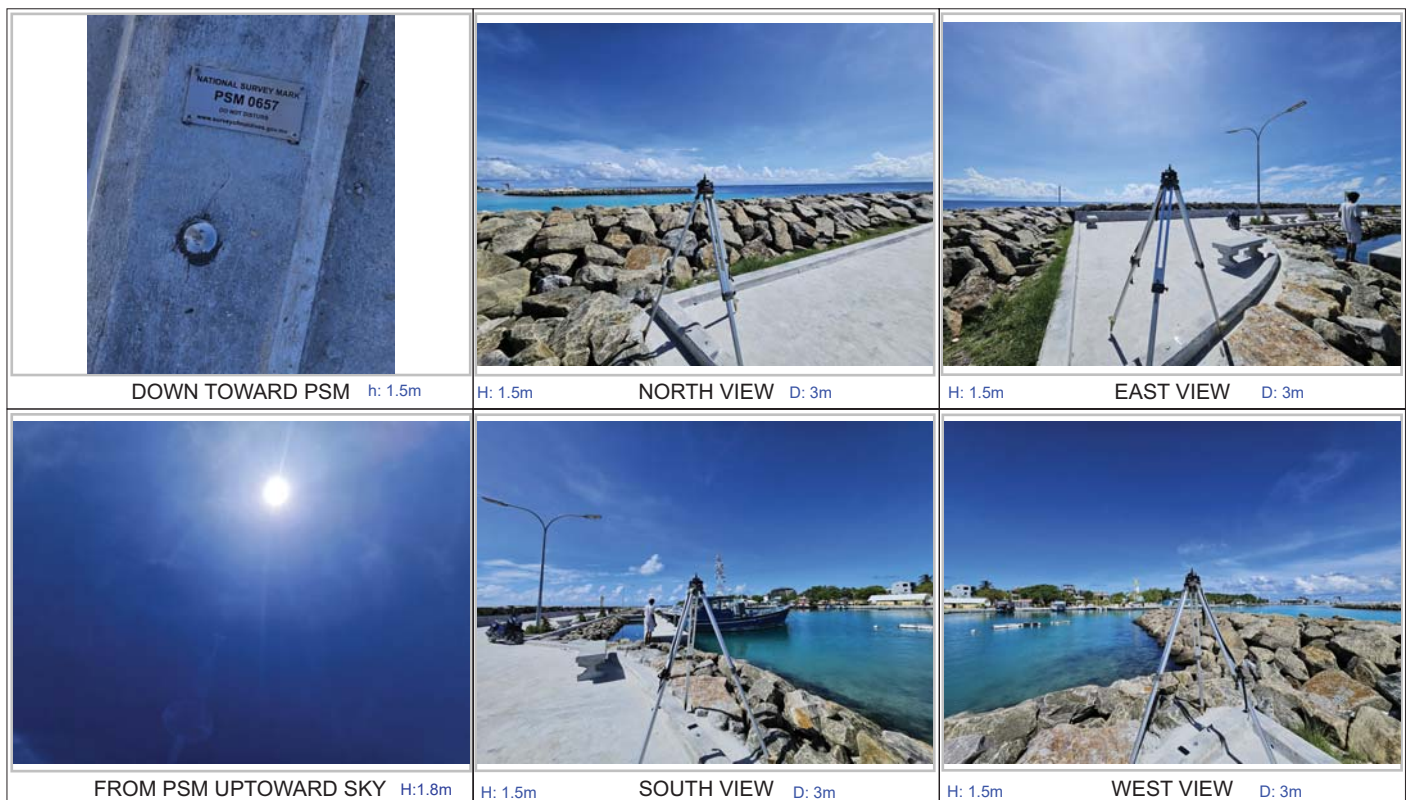
Monument description & method of survey:

- SS mushroom bolt driven on top of revetment retaining wall , center mark punched.
- PSM plate label attached with screws showing PSM number
- finished to wall top level which is 0.15m from road level .
- Static Survey 3D control by GNSS static post processing.
- Vertical elevation related MSL was transferred from PSM0174 by GNSS static post processing.
- PSM0656 is inter-visible to PSM0657

General site condition & access:

- located on road edge of east side breakwater.
- Easily accessible.

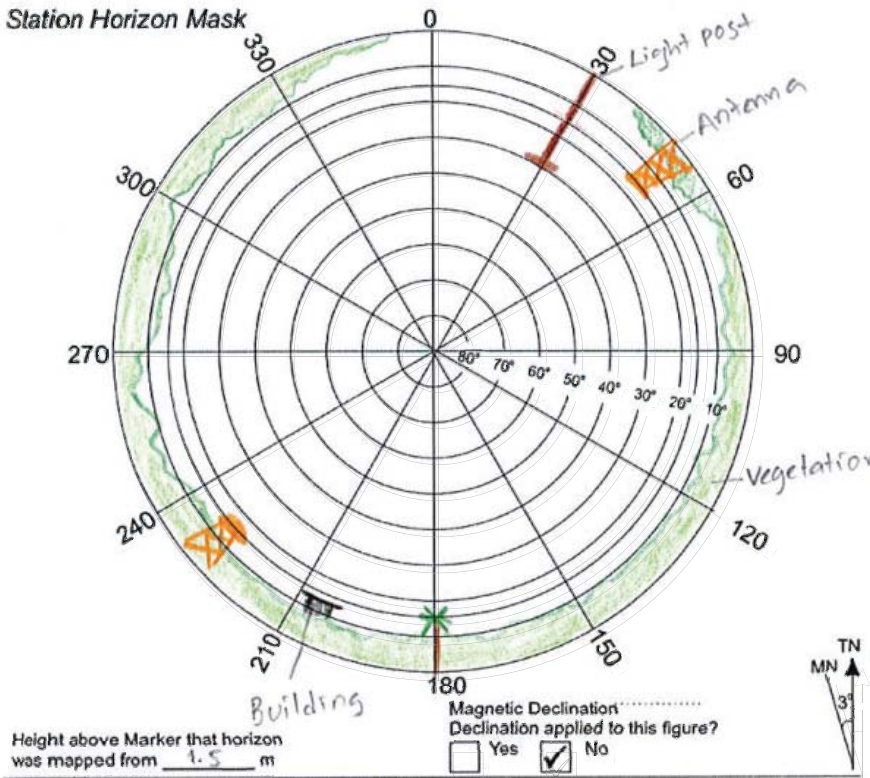
Owner: Alifu Alifu Ukulhas council.



SITE INFORMATION

Station Number

PSM 0657



Locality



Sketched by: saeed

Scale: Not to scale

Date: 4-May-24

MALDIVES LAND AND SURVEY AUTHORITY

MINISTRY OF HOUSING AND INFRASTRUCTURE

Office (PABX): +(960) 3004300, Fax: +(960) 3004254

Ameenee Magu, Maafannu, Male', 20392, Maldives.

Email: survey@housing.gov.mv

Web: www. surveyofmaldives.gov.mv



CONTROL POINT DETAILS	Station Number PSM0658
Coordinate Information	
Geodetic	Grid
WGS 84	UTM Zone 43
Lat: 4°12'56.59220"N	E: 262765.053
Long: 72°51'46.00013"E	N: 466297.543
Ellp Height: -94.409	Orth Height: 1.065
Island Name: LD0916 Alifu Alifu Ukulhas	Date: 4-May-24

Monument description & method of survey:

- concrete cast in-situ (cast on-site) with a diameter of 0.3m and 1m in length.
- A 1m long PVC pipe with a diameter of 0.3m was used as a casing for the concrete.
- 1.5m s/s rod driven to ground as the centre and marked with punch.
- The monument was labeled with a stainless steel plate stating the point identification.
- The monument was finished to the ground level.
- a frame was built around the monument for its cover.
- Static Survey 3D control by GNSS static post processing.
- Vertical elevation related MSL was transferred from PSM0174 by GNSS static post processing.

General site condition & access:

- located at west side stadium near west pavement.
- Easily accessible.

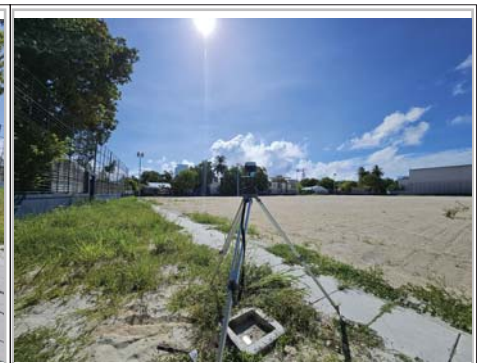
Owner: Alifu Alifu Ukulhas council.



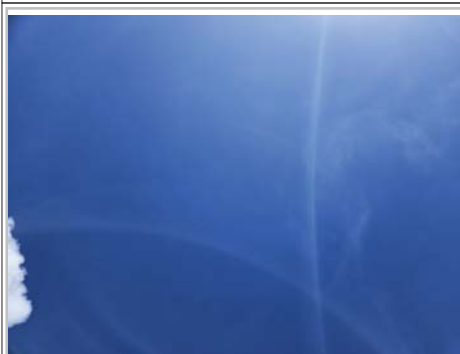
DOWN TOWARD PSM h: 1.5m



NORTH VIEW D: 3m



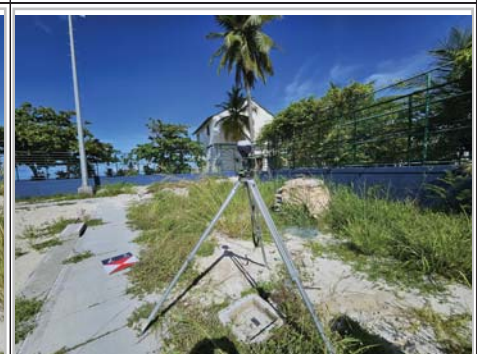
EAST VIEW D: 3m



FROM PSM UPTOWARD SKY H: 1.8m



SOUTH VIEW D: 3m

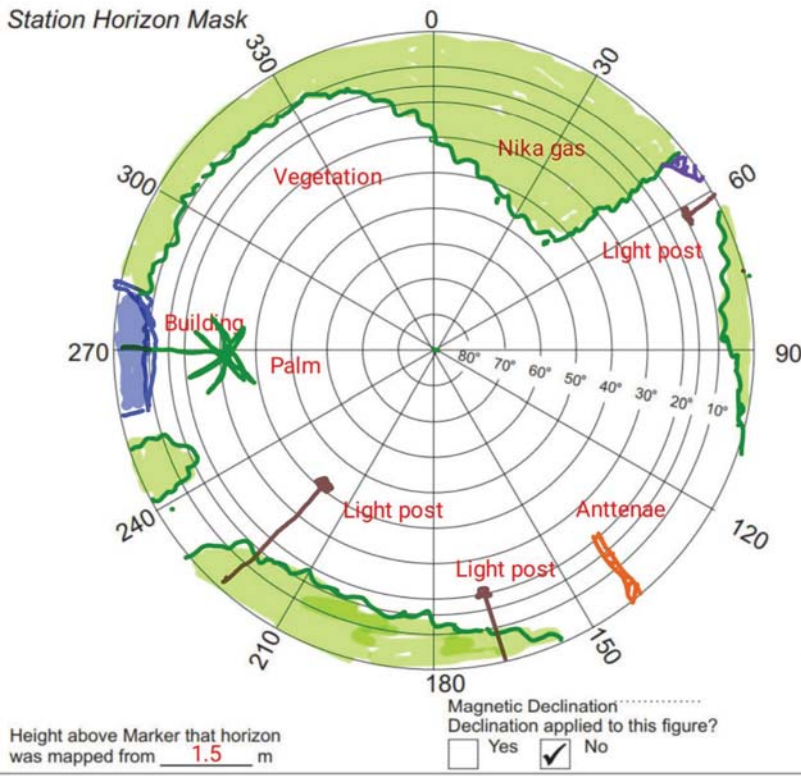


WEST VIEW D: 3m

SITE INFORMATION

Station Number

P S M 0 6 5 8



Locality



Sketched by: saeed

Scale: Not to scale

Date: 4-May-24