

MALDIVES LAND AND SURVEY AUTHORITY

MINISTRY OF HOUSING AND INFRASTRUCTURE

Office (PABX): +(960) 3004300, Fax: +(960) 3004254

Ameenee Magu, Maafannu, Male', 20392, Maldives.

Email: survey@housing.gov.mv

Web: www. surveyofmaldives.gov.mv



CONTROL POINT DETAILS	Station Number PSM0650
Coordinate Information	
Geodetic	Grid
WGS 84	UTM Zone 43
Lat: 4°11'38.05023"N	E: 249971.682
Long: 72°44'51.51875"E	N: 463920.122
Ellp Height: -94.815	Orth Height: 1.004
Island Name: LD0132 Alifu Alifu Mathiveri	Date: 2-May-24

Monument description & method of survey:

- SS Mushroom bolt driven to the Quay wall corner , center marked with punch.
- PSM plate label attached with screws to the quay wall showing PSM number
- finished to quay wall level .
- Static Survey 3D control by GNSS post processing.
- The vertical elevation related MSL was transferred from PSM0651 by GNSS static post processing.
- PSM0650 is inter-visible to PSM0651

General site condition & access:

- located at north side near stairs.
- Easily accessible.

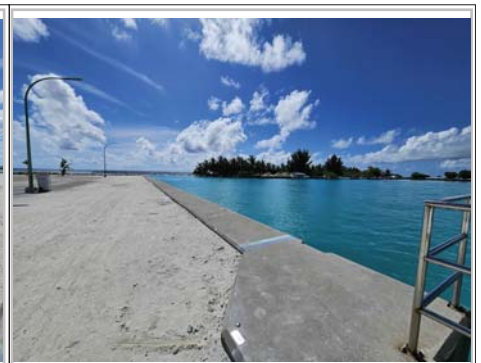
Owner: Alifu Alifu Mathiveri council



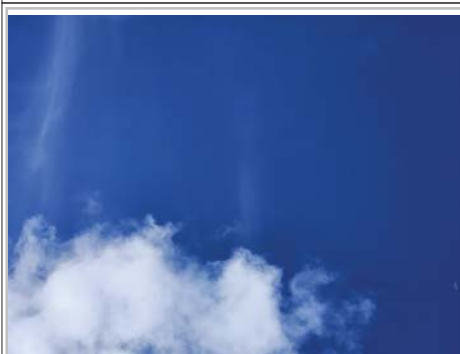
DOWN TOWARD PSM



NORTH VIEW D: 3m



EAST VIEW D: 3m



FROM PSM UPTOWARD SKY H:1.7m



SOUTH VIEW D: 3m



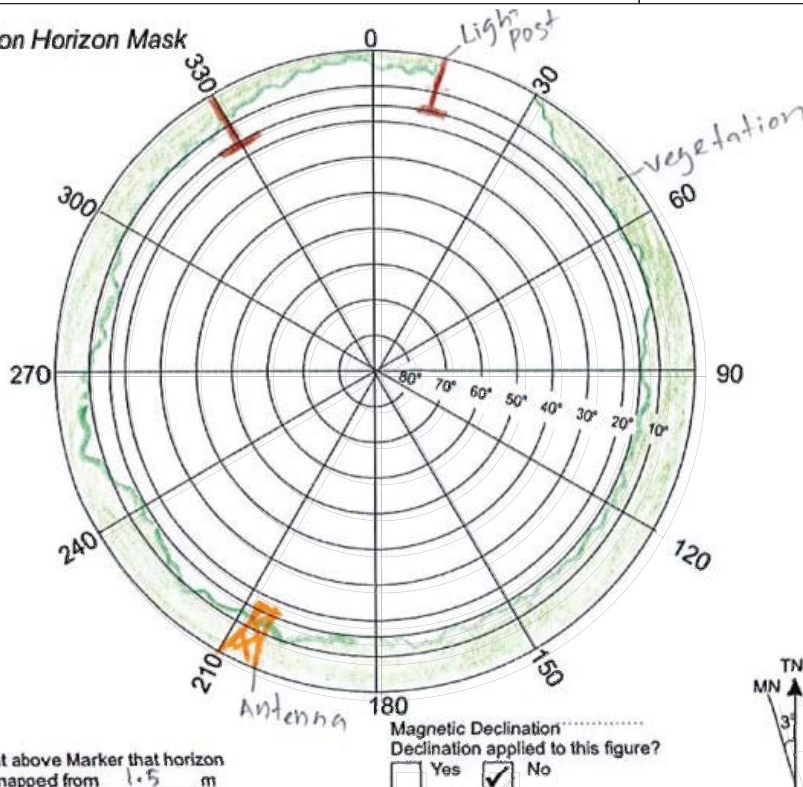
WEST VIEW D: 3m

SITE INFORMATION

Station Number

P S M 0 6 5 0

Station Horizon Mask



Locality



Sketched by: saeed

Scale: Not to scale

Date: 2-May-24

MALDIVES LAND AND SURVEY AUTHORITY

MINISTRY OF HOUSING AND INFRASTRUCTURE

Office (PABX): +(960) 3004300, Fax: +(960) 3004254

Ameenee Magu, Maafannu, Male', 20392, Maldives.

Email: survey@housing.gov.mv

Web: www. surveyofmaldives.gov.mv



CONTROL POINT DETAILS	Station Number PSM0651
Coordinate Information	
Geodetic	Grid
WGS 84	UTM Zone 43
Lat: 4°11'32.30817"N	E: 250027.123
Long: 72°44'53.40550"E	N: 463740.001
Ellp Height: -95.078	Orth Height: 0.737
Island Name: LD0132 Alifu Alifu Mathiveri	Date: 2-May-24

Monument description & method of survey:

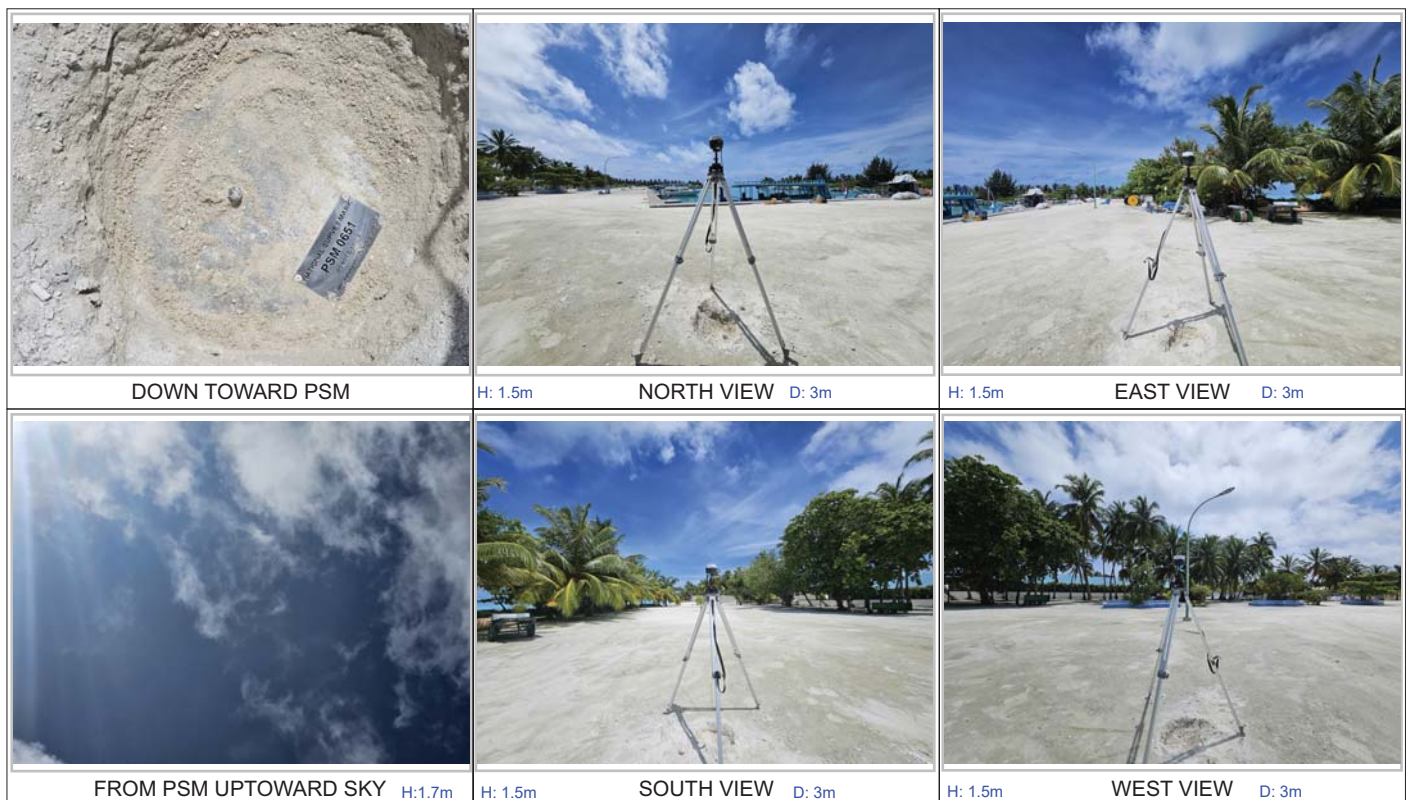
- A 1m long PVC pipe with a diameter of 0.3m was used as a casing for the concrete.
- A 1.5m long stainless steel (s/s) rod was driven to the ground as center marked with cross as a center point of PSM.
- The monument was labeled with a stainless steel plate stating the point identification.
- The monument was finished 0.2 below ground level.

- Static Survey 3D control by GNSS post processing.
- Vertical datum MSL,height corrected to water level using tide prediction data.
- PSM0650 is inter-visible to PSM0651

General site condition & access:

- located at west side of the harbour.
- Easily accessible.

Owner: Alifu Alifu Mathiveri council

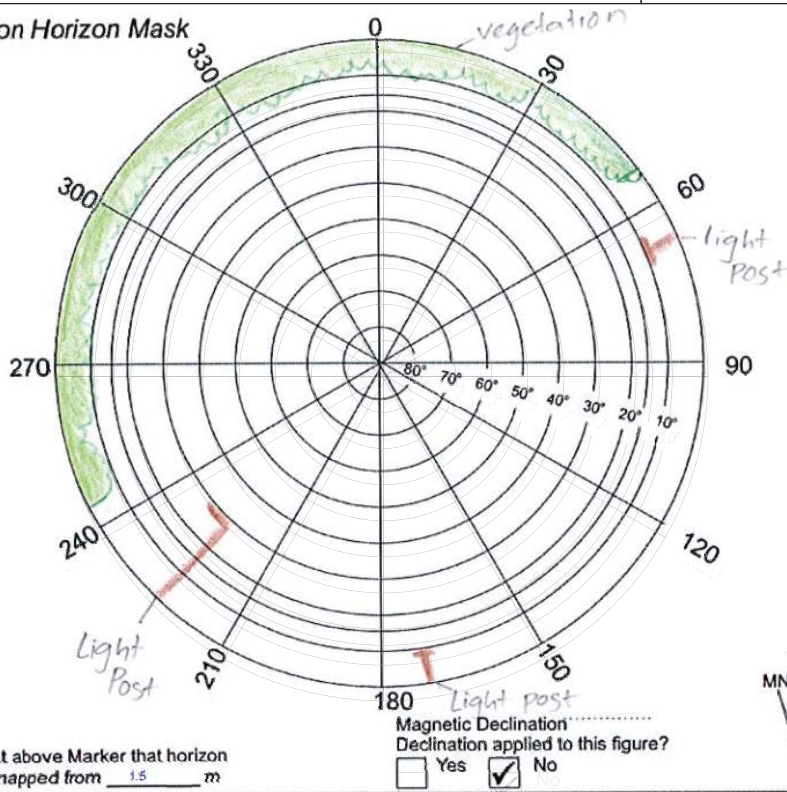


SITE INFORMATION

Station Number

P S M 0 6 5 1

Station Horizon Mask



Locality



Sketched by: saeed

Scale: Not to scale

Date: 2-May-24

MALDIVES LAND AND SURVEY AUTHORITY

MINISTRY OF HOUSING AND INFRASTRUCTURE

Office (PABX): +(960) 3004300, Fax: +(960) 3004254

Ameenee Magu, Maafannu, Male', 20392, Maldives.

Email: survey@housing.gov.mv

Web: www. surveyofmaldives.gov.mv



CONTROL POINT DETAILS	Station Number PSM0652
Coordinate Information	
Geodetic	Grid
WGS 84	UTM Zone 43
Lat: 4°11'26.48496"N	E: 249784.777
Long: 72°44'45.49363"E	N: 463565.278
Ellp Height: -95.121	Orth Height: 0.707
Island Name: LD0132 Alifu Alifu Mathiveri	Date: 2-May-24

Monument description & method of survey:

-A 1m long PVC pipe with a diameter of 0.3m was used as a casing for the concrete.
 A 1.5m long stainless steel (s/s) rod was driven to the ground as center marked with cross as a center point of PSM.
 The monument was labeled with a stainless steel plate stating the point identification.
 The monument was finished 0.1 below ground level.

Static Survey 3D control by GNSS post processing.
 The vertical elevation related MSL was transferred from PSM0651 by GNSS static post processing.

General site condition & access:

- located inside football ground.
- Easily accessible.

Owner: Alifu Alifu Mathiveri council



DOWN TOWARD PSM



H: 1.5m NORTH VIEW D: 3m



H: 1.5m EAST VIEW D: 3m



FROM PSM UPTOWARD SKY H:1.7m



H: 1.5m SOUTH VIEW D: 3m



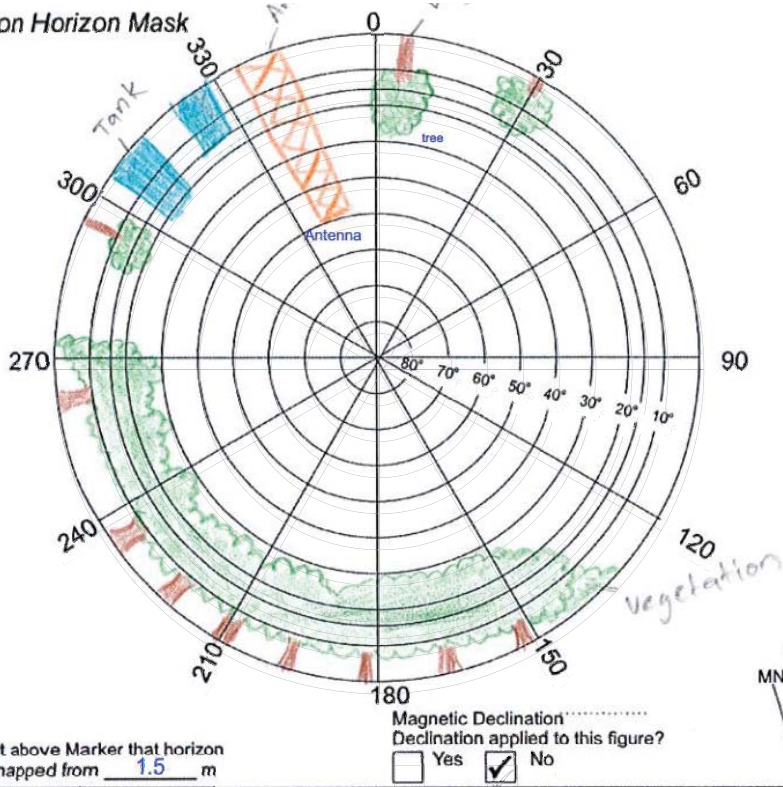
H: 1.5m WEST VIEW D: 3m

SITE INFORMATION

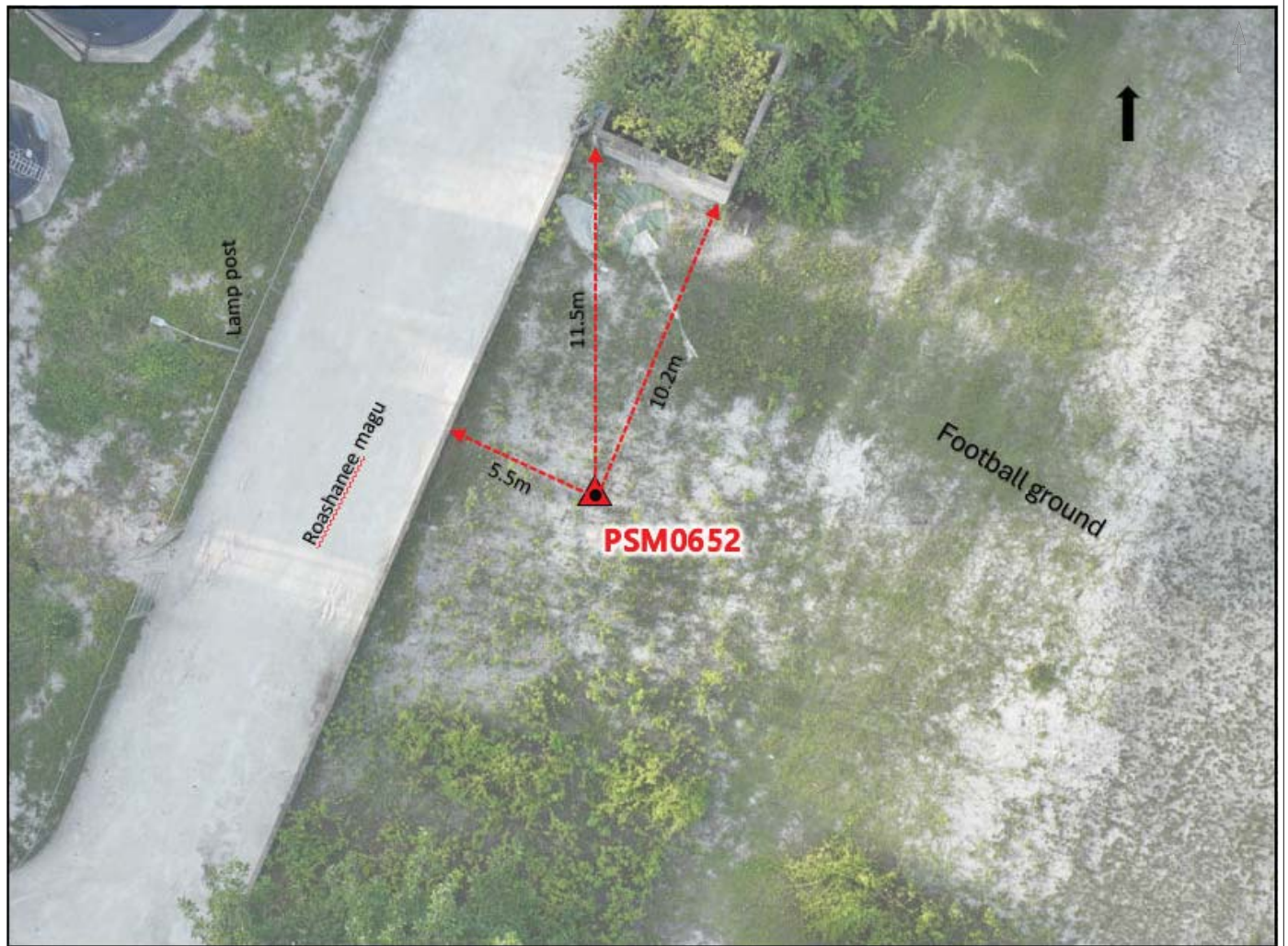
Station Number

P S M 0 6 5 2

Station Horizon Mask



Locality



Sketched by: saeed

Scale: Not to scale

Date: 2-May-24